



Spare Parts Catalog

5 WG 210

Material number: 4657.055.131

Current date: 21.06.2017

ZF Friedrichshafen AG
Hauptverwaltung
80038 Friedrichshafen
Deutschland

Telefon: +49 7541 77-0

Telefax: +49 7541 77-908000

www.zf.com

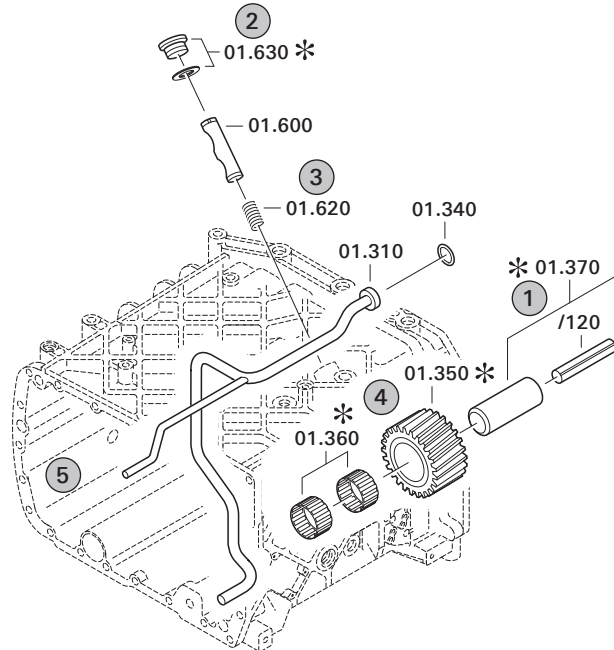
zuständiges Werk:
Passau

Notes relating to the spare parts catalog

Setup of the spare parts catalog

- Cover sheet
- Technical Cover (only in SDM print)
- Overview of figures
- Figure
- Associated parts list
- Next figure
- Associated parts list
- ...

Figure and parts list



Overview of figures

Bildtafel Figure	Sachnummer Product number	Benennung (Description)	Technische Info Technical info	Description (Benennung)	Menge Quantity	Einheit Unit
068.08.17	1316.170.001	AUSLEGER	WL	SHIFT TURRET	1	Stk
068.08.06	1316.170.031	DECKEL	WL*H-H*VM	COVER	1	Stk
068.08.14	1316.170.808	DECKEL	WL*AUSL+GEH*H-H*HF160N	COVER	1	Stk
08	1316.170.441	ANSCHLUSSTEILE	WL*NG-VORB*RG-SCHL*168N*BAJONETT	CONNECTING PARTS	1	Stk

The "gap" indicates that there is no separate graphics panel (poster) for this assembly
The parts of this assembly are shown with the same mid-section number on the figure

1 Positions and subpositions

Pos.	Sachnummer Product number	Benennung (Description)	Technische Info Technical info	Description (Benennung)	Menge Quantity	Einheit Unit
0370	1315.201.054	RUECKLAUFBOLZEN	KPL.16S151*SG*L= 79	REV.IDLER SHAFT	1	Stk
/0120	0631.329.293	SPANNSTIFT		SLOT. PIN	1	Stk

Positions marked with "/" are the individual items of a completion
For example: Position 0370 contains a centering pin with the position /0120

2 Combinations with standardized parts

Pos.	Sachnummer Product number	Benennung (Description)	Technische Info Technical info	Description (Benennung)	Menge Quantity	Einheit Unit
0630		VERSCHL.SCHR.		SCREW PLUG	1	Stk
	0636.302.067	VERSCHL.SCHR.		SCREW PLUG	1	Stk
	0634.801.249	DICHTRING	A 26 X 31	SEALING RING	1	Stk

The parts list shows the components included in the combination of standardized parts

3 Depiction of position/item number on the figure and in the parts list

01.620 - on the figure 01 relates to the assembly in which the position is included. Due to program-related reasons, it is shown on the figure.

0620 - in the parts list

Pos.	Sachnummer Product number	Benennung (Description)	Technische Info Technical info	Description (Benennung)	Menge Quantity	Einheit Unit
0620	0732.040.736	DRUCKFEDER		COMPRESSION SPRING	1	Stk

4 *-Positions

Positions marked with an * are optional i.e. inclusion in the parts list is not mandatory.
The following note is shown on the figure

je nach Stücklistenausführung
depending on spec. number
*
suivant la nomenclature
secondo la distinta base

5 Parts, dotted display

Parts with dotted display on the figure are only used for orientation of other parts



Pos.	Information	Amendment number
	CUSTOMER: PROMEDINVEST	
	1.PERFORMANCE CALC.: 4657 707 820	
	VEHICLE DESIGNATION: A371-10	
	WEIGHT EMPTY: 21,000 TO	
	ENGINE: CUMMINS 6CTA#8.3-#260	
	ENGINE POWER: 195,0 KW	
	SPEED: 2100 U/MIN	
	INPUT TORQUE: 1100 N/M	
	SPEED: 1400 U/MIN	
	TYRE SIZE: 23,5X25	
	TYRE RADIUS DYN.: 0,740 M	
	AXLE RATIO: 24,667	
	MAX. SPEED: 35,0 KM/H	
	2.PERFORMANCE CALC.: 4657 707 837	
	VEHICLE DESIGNATION: AMKODOR 371A	
	WEIGHT EMPTY: 21,000 TO	
	ENGINE: YAMZ 7601.10 WITH TRANSFER BOX	
	ENGINE POWER: 227,3 KW	
	SPEED: 2.134 U/MIN	
	ENGINE TORQUE: 1.182 N/M	
	SPEED: 1.292 U/MIN	
	TIRES: 23,5X25	
	TYRE RADIUS DYN.: 0,740 M	
	AXLE RATIO: 24,667	
	MAX. SPEED: 34,7 KM/H	
	PRODUCT DESCRIPTION: ZF-ERGOPOWER TRANSMISSION	
	TRANSMISSION TYPE: 5 WG 210	
	DROP CENTER DISTANCE: 540 MM	
	VEHICLE: WHEEL LOADER	
	1. GEAR FORWARD: 4,043	
	2. GEAR FORWARD: 2,255	
	3. GEAR FORWARD: 1,466	
	4. GEAR FORWARD: 0,942	



Pos.	Information	Amendment number
	5. GEAR FORWARD: 0,613	
	1. GEAR REVERSE: 3,834	
	2. GEAR REVERSE: 2,138	
	3. GEAR REVERSE: 0,894	
	NUMBER OF PULSES ENGIN: 4	
	NUMBER OF PULSES TURBINE: 54	
	NUMBER OF PULSES MRK: 55	
	NUMBER OF PULSES OUTPUT: 46	
	CONVERTER: W 340	
	CONVERTER PART NO.: 034 H 113	
	LOCK-UP CLUTCH: WITHOUT	
	STALL TORQUE RATIO: 2,81	
	TORQUE CONVERTER ABSORPTION: 124 NM	
	STATOR FREEWHEEL: WITHOUT	
	ENGINE INPUT: REMOTE MOUNTED VIA JOINT SHAFT	
	INPUT FLANGE: D 150 8 X M12 X 35	
	OUTPUT: STANDARD	
	OUTPUT CONVERTER SIDE: WITHOUT AXLE DISCONNECT	
	OUTPUT FLANGE CONVERTER SIDE: D 180 8 X M14 X 1,5 X 45	
	AXIAL DISPLACEABILITY: WITHOUT	
	OUTPUT PTO SIDE: WITH PARKING BRAKE	
	DISC BRAKE: SAHR FSG 88	
	RELEASE PRESSURE: 120 - 150 BAR	
	MEDIUM: HYDRAULIK OIL DIN 51525	
	CONNECTION BRAKE PRESSURE: M 10 X 1	
	OUTPUT FLANGE PTO SIDE: D 180 8 X M14 X 1,5 X 45	
	POWER TAKE OFF: 1 PTO COAXIAL ENGINE-DEPENDENT	
	PTO - DISCONNECTION: WITHOUT	
	1.PTO FLANGE: SAE C 2/4 HOLE	
	DRIVER PROFILE: SAE C 12/24 DP 14 T	
	GEAR CHANGE CONTROL: ZF-ERGOSHIFT/ PROP VALVE	
	VOLTAGE: 24 VOLT	
	SETTING SPECIFICATION: 4657.700.099	



Pos.	Information	Amendment number
	SPEED CONTROL: CONNECTION VIA EST	
	OIL LEVEL TUBE: MOUNTED ON CONVERTER SIDE	
	OIL DIPSTICK: SHORT STRAIGHT	
	FILTER INSTALLATION: DIRECT MOUNTED	
	PRES. DROP SWITCH: CLOSING SWITCH	
	EMERGENCY STEERING PUMP: WITH	
	FLOW RATE: 32 CM³/U	
	CONSTANT FLOW: 50 DM³/MIN	
	EMERGENCY STEERING PUMP CON. : RADIAL	
	OIL TEMPERATURE SENSOR: WITH (WITHOUT GAUGE)	
	GEARBOX BREATHER: WITH	
	SOFTWARE OPTIONS OHNE SOFTWARE	
	ELECTRIC PARTS ORDER: INCLUDED IN SCOPE OF SUPPLY	
	SEPARATE ORDER: WITHOUT	
	GROUP LOOSE PARTS: 4657.183.319	
	CONTROL UNIT: EST 37A	
	GEAR SELECTOR: DW 3	
	2ND GEAR SELECTOR: WITHOUT	
	DISPLAY: FOR INBOARD MOUNTING	
	LOAD SENSOR: WITHOUT	
	WIRING: WITH	
	OIL CAPACITY TRANSM.: CA. 27 LITRE	
	OIL FILLING TRANSM.: WITHOUT	
	OIL GRADE TRANSM.: TE- ML 03	
	PRIMER PAINT: RED RAL 3009	
	DOCUMENTATION GEAR BOX: -----	
	SECTION DRAWING: 4657 500 092	
	INSTALLATION DRAWING: 4657 655 131	
	GEARBOX DIAGRAM: 4657 500 165	
	OIL CIRCUIT DIAGRAM: 4657 700 159	
	INSTALL. INSTRUCTIONS: 0000 702 951	
	DOCU. CONTROL UNIT: -	
	DRAWING 6009 665 002	



Pos.	Information	Amendment number
	DRAWING GEAR SEL. 1: 6006 630 033	
	CONNECTION DIAGRAM: 6006 700 564	
	WIRING DIAGRAM: 6029 701 314	
	CONNECTION DIAGRAM: 6029 701 315	
	DRAWING DISPLAY: 6007 603 047	

Assembly group overview

Page 1 from 2

Material number: 4657.055.131



5 WG 210 /

Graphics	Pos.	Material number	Name	Quantity	Amend. no.	Techn. Info.
465713004500	270	4657.130.045	ENGINE CONNECTION	1		
465713040600	280	4657.130.406	ENGINE CONNECTION	1		
416603407900	500	4166.034.079	CONVERTER	1		
465710203000	30	4657.102.030	INPUT	1		
465710107401	10	4657.101.074	TRANSMISSION HOUSING	1		
	KIT	4657.298.096	HOUSING REAR SECTION	1		
465710140800	20	4657.101.408	TRANSMISSION HOUSING	1		
465717104300	350	4657.171.043	COUPLING	1		
465717203400	360	4657.172.034	COUPLING	1		
465717301900	370	4657.173.019	COUPLING	1		
465717404900	380	4657.174.049	COUPLING	1		
465717501400	390	4657.175.014	COUPLING	1		
465717601700	400	4657.176.017	COUPLING	1		
465710301000	50	4657.103.010	OUTPUT	1		
465710342900	60	4657.103.429	OUTPUT	1		
465610901800	170	4656.109.018	PARKING BRAKE	1		
465710940900	70	4657.109.409	PARKING BRAKE	1		

Assembly group overview

Page 2 from 2

Material number: 4657.055.131



5 WG 210 /

Graphics	Pos.	Material number	Name	Quantity	Amend. no.	Techn. Info.
465715400400	340	4657.154.004	POWER TAKE-OFF	1		
465710601200	110	4657.106.012	SHIFT SYSTEM	1		
465710640720	115	4657.106.407	SHIFT SYSTEM	1		
465615901921	120	4656.159.019	SHIFT SYSTEM	1		
465712300300	225	4657.123.003	CONTROL UNIT	1		
465612000300	190	4656.120.003	PRESSURE REGULATOR	1		
465712200500	220	4657.122.005	PRESSURE OIL PUMP	1		
465713700400	310	4657.137.004	EMERGENCY STEERING PUMP	1		
465710700300	130	4657.107.003	SPEEDOMETER	1		
465712500200	250	4657.125.002	INDUCTIVE SENSOR	1		
465712400300	240	4657.124.003	TEMPERATURE SENSOR	1		
465613801500	330	4656.138.015	FILTER	1		
465713100400	290	4657.131.004	FILLER NOZZLE	1		
465718331900	490	4657.183.319	LOOSE PARTS	1		

Plant

Page 1 from 1

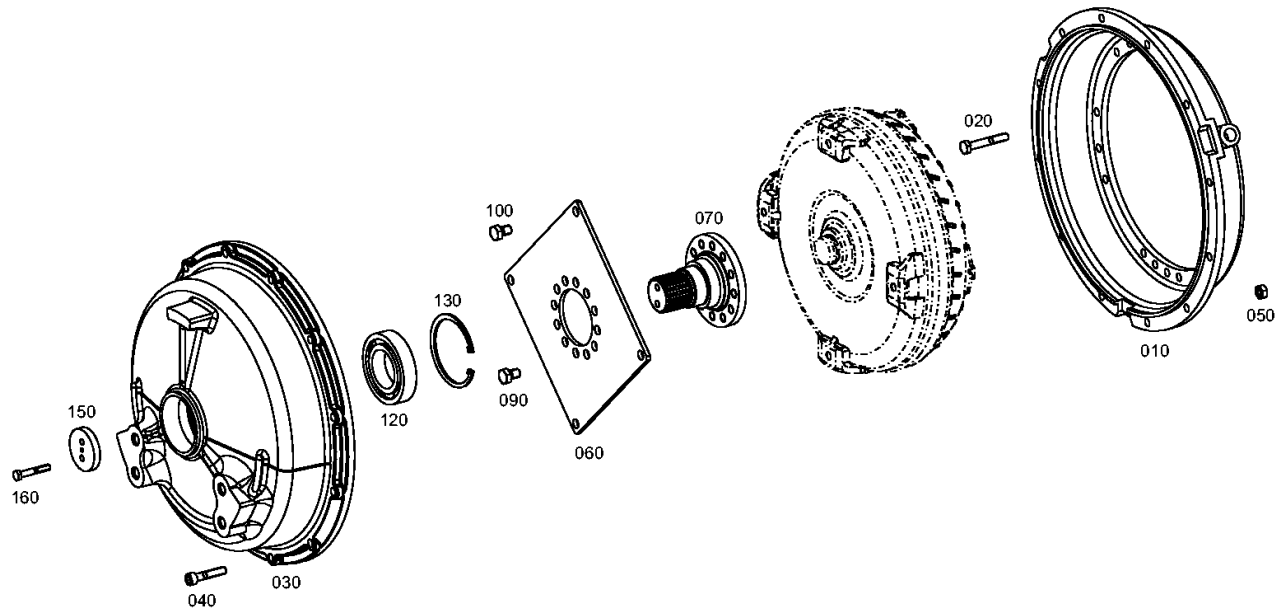
Material number: 4657.055.131

Plant: 465713004500

Material-assembly-group-no: 4657.130.045



5 WG 210 /
ENGINE CONNECTION



Parts list

Page 1 from 1



5 WG 210 /

Material number: 4657.055.131

Plant: 465713004500

Material-assembly-group-no: 4657.130.045

Pos.	Material number	Customer material	Name	Quantity	ME	Amend. no.	Techn. Info.	Rep kit	Alternative material
10	4656.330.008		CONVERTER BELL	1			SAE-3 Laenge 77.7		
20	0636.100.713		HEXAGON SCREW	18			M10X65		
30	4657.330.037		COVER	1					
40	0636.100.801		CAP SCREW	12			M10X50		
50	0637.006.281		HEXAGON NUT	12		Z00015425010	M10		
60	4657.330.004		DIAPHRAGM	1					
70	4657.330.053		INPUT SHAFT	1		K01306/0610	Z=24		
90	0636.102.411		HEXAGON SCREW	12			M12X18		
100	0636.102.411		HEXAGON SCREW	4			M12X18		
120	0735.330.440		BALL BEARING	1			55,000X100,000X21,000		
130	0630.532.157		V-RING	1					
150	4627.303.027		WASHER	1					
160	0636.100.722		HEXAGON SCREW	2			M8X50		

Plant

Page 1 from 1

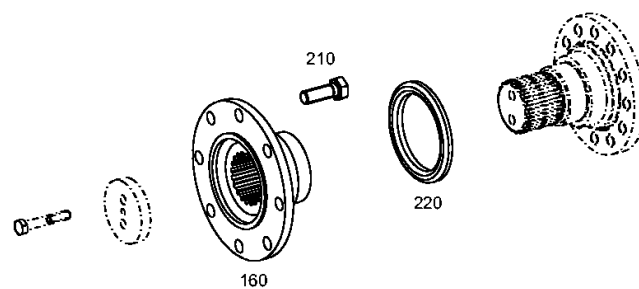
Material number: 4657.055.131

Plant: 465713040600

Material-assembly-group-no: 4657.130.406



5 WG 210 /
ENGINE CONNECTION



Parts list

Page 1 from 1



5 WG 210 /

Material number: 4657.055.131

Plant: 465713040600

Material-assembly-group-no: 4657.130.406

Pos.	Material number	Customer material	Name	Quantity	ME	Amend. no.	Techn. Info.	Rep kit	Alternative material
160	4620.302.036		INPUT FLANGE	1					
210	0636.016.112		HEXAGON SCREW	8			M12X35		
220	4657.330.042		SCREEN SHEET	1		K00197/0210	S=2,0		

Plant

Page 1 from 1

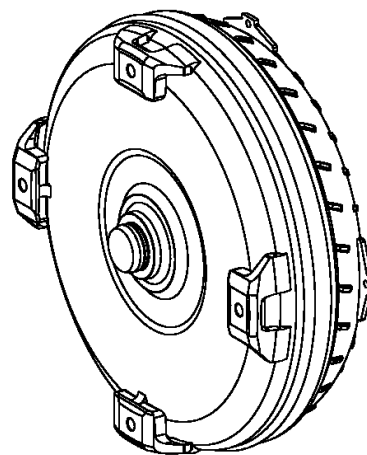
Material number: 4657.055.131

Plant: 416603407900

Material-assembly-group-no: 4166.034.079



5 WG 210 /
CONVERTER



010

Parts list

Page 1 from 1



5 WG 210 /

Material number: 4657.055.131

Plant: 416603407900

Material-assembly-group-no: 4166.034.079

Pos.	Material number	Customer material	Name	Quantity	ME	Amend. no.	Techn. Info.	Rep kit	Alternative material
10	4168.034.113		CONVERTER	1					

Plant

Page 1 from 1

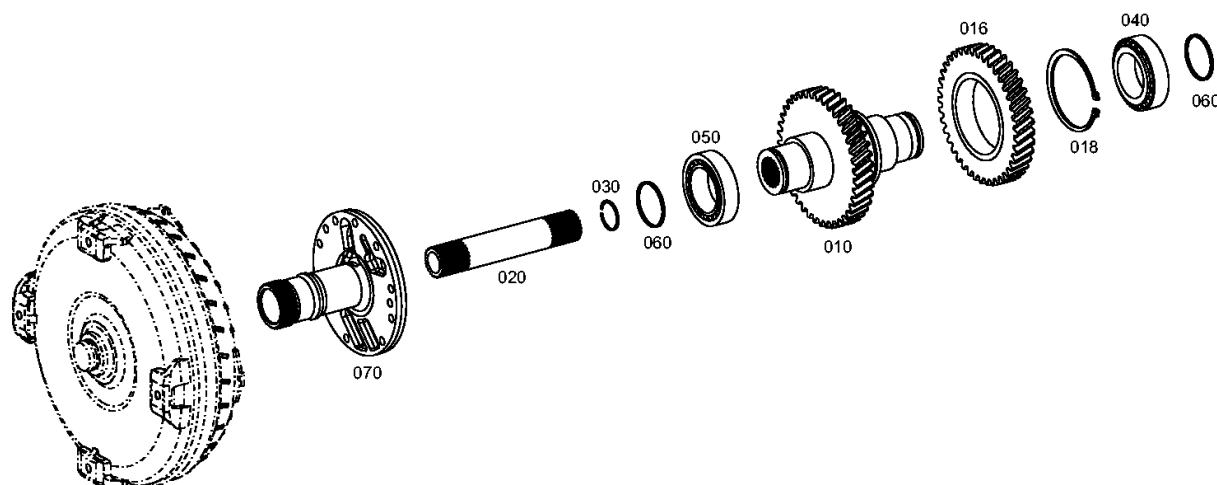
Material number: 4657.055.131

Plant: 465710203000

Material-assembly-group-no: 4657.102.030



5 WG 210 /
INPUT



Parts list

Page 1 from 1



5 WG 210 /

Material number: 4657.055.131

Plant: 465710203000

Material-assembly-group-no: 4657.102.030

Pos.	Material number	Customer material	Name	Quantity	ME	Amend. no.	Techn. Info.	Rep kit	Alternative material
10	4657.302.005		INPUT SHAFT	1			Z=54*Z=30		
16	4657.302.004		INPUT GEAR	1			Z=53		
18	0630.501.056		RETAINING RING	1			100X3		
20	4656.302.010		TURBINE SHAFT	1					
30	0630.513.099		SNAP RING	1					
40	0735.300.549		TAPERED ROLLER BEARING	1			60,000X95,000X27,000		
50	0735.300.549		TAPERED ROLLER BEARING	1			60,000X95,000X27,000		
60	0634.402.557		R-RING	2			60X3		
70	4656.302.036		STATOR SHAFT	1			Z=46		

Plant

Page 1 from 2

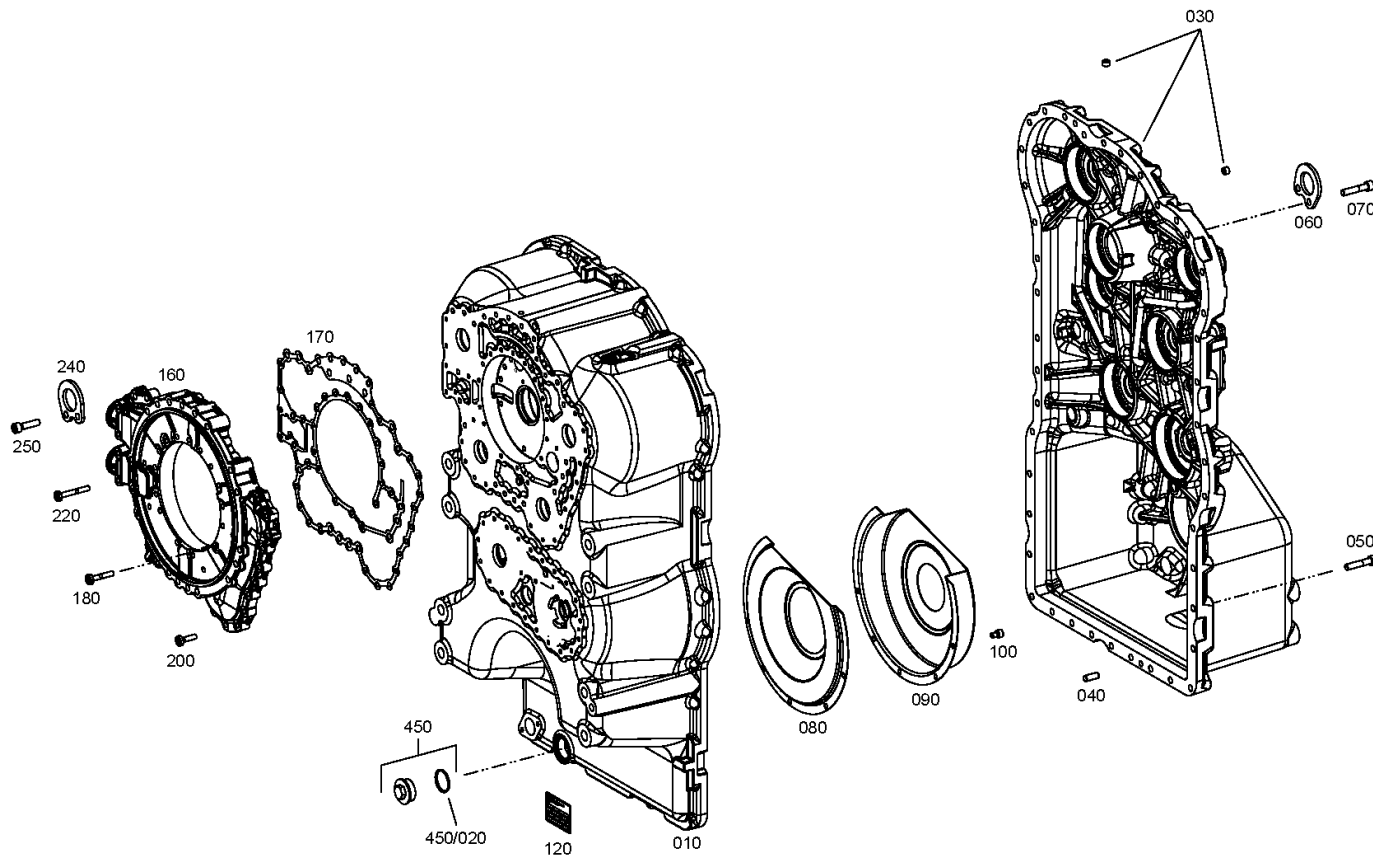
Material number: 4657.055.131

Plant: 465710107401

Material-assembly-group-no: 4657.101.074



5 WG 210 /
TRANSMISSION HOUSING



Plant

Page 2 from 2

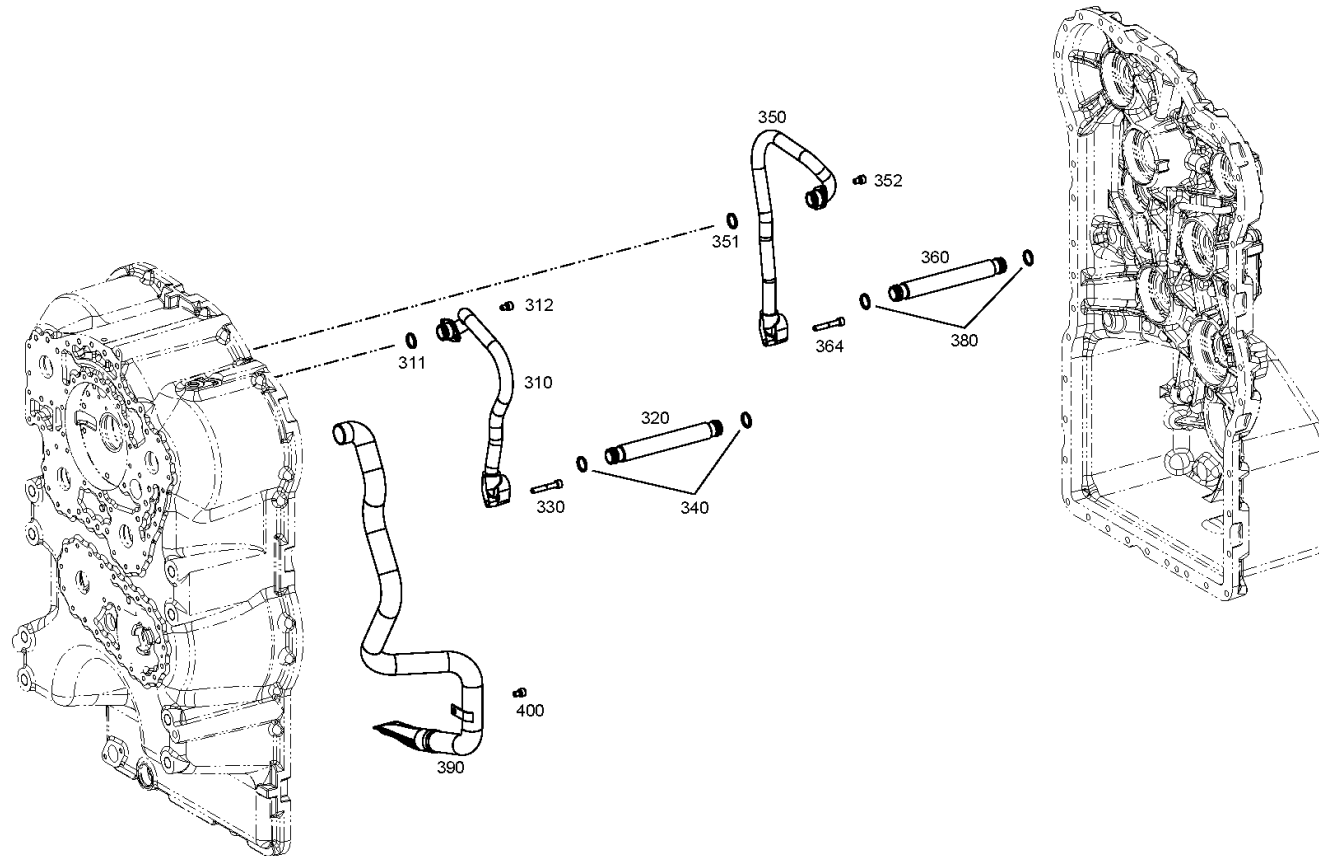
Material number: 4657.055.131

Plant: 465710107402

Material-assembly-group-no: 4657.101.074



5 WG 210 /
TRANSMISSION HOUSING



Parts list

Page 1 from 1



5 WG 210 /

Material number: 4657.055.131

Plant: 465710107401

Material-assembly-group-no: 4657.101.074

Pos.	Material number	Customer material	Name	Quantity	ME	Amend. no.	Techn. Info.	Rep kit	Alternative material
10	4657.201.151		HOUS.FRONT SECT	1					
30	4657.201.157		HOUSING REAR PART						4657.298.096
40	0631.306.816		CYLINDRICAL PIN	2			10X24		
50	0636.100.801		CAP SCREW	40			M10X50		
60	4656.301.148		FIXING PLATE	1			h=6,000		
70	0636.100.801		CAP SCREW	2			M10X50		
80	4657.301.032		SCREEN SHEET	1					
90	4657.301.033		SCREEN SHEET	1					
100	0636.100.803		CAP SCREW	5			M8X12		
120	0730.365.279		TYPE PLATE	1			ZF-Standard/Passau		
160	4656.301.047		OIL FEED.HOUG.	1					
170	4656.301.023		GASKET	1					
180	0736.300.182		TORX SCREW	21			M8X45		
200	0736.300.233		TORX SCREW	15			M8X30		
220	0736.300.183		TORX SCREW	4			M8X60		
240	4656.301.148		FIXING PLATE	1			h=6,000		
250	0636.100.816		CAP SCREW	2			M10X40		
310	4657.201.144		OIL TUBE	1			22,000X2,000		
311	0634.306.213		O-RING	1			22X3		
312	0636.100.803		CAP SCREW	2			M8X12		
320	4657.301.044		OIL TUBE	1					
330	0636.115.295		CAP SCREW	1			M8X50		
340	0634.306.213		O-RING	2			22X3		
350	4657.201.145		OIL TUBE	1			22,000X2,000		
351	0634.306.213		O-RING	1			22X3		
352	0636.100.803		CAP SCREW	2			M8X12		
360	4657.301.044		OIL TUBE	1					
364	0636.115.295		CAP SCREW	1			M8X50		
380	0634.306.213		O-RING	2			22X3		
390	4657.201.143		SUCTION TUBE	1			35,000X2,000		
400	0636.100.803		CAP SCREW	1			M8X12		
450	4475.280.216		SCREW PLUG	1					
/20	0634.314.304		O-RING	1			35X2		
30	4657.298.096		HOUSING REAR SECTION	1					

Parts list

Page 1 from 1



5 WG 210 /

Material number: 4657.055.131

Material-assembly-group-no: 4657.298.096

Pos.	Material number	Customer material	Name	Quantity	ME	Amend. no.	Techn. Info.	Rep kit	Alternative material
	4657.298.096		HOUSING REAR SECTION	1					

Plant

Page 1 from 1

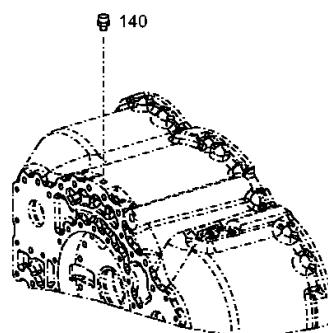
Material number: 4657.055.131

Plant: 465710140800

Material-assembly-group-no: 4657.101.408



5 WG 210 /
TRANSMISSION HOUSING



Parts list

Page 1 from 1



5 WG 210 /

Material number: 4657.055.131

Plant: 465710140800

Material-assembly-group-no: 4657.101.408

Pos.	Material number	Customer material	Name	Quantity	ME	Amend. no.	Techn. Info.	Rep kit	Alternative material
140	0750.131.027		BREATHER	1					

Plant

Page 1 from 1

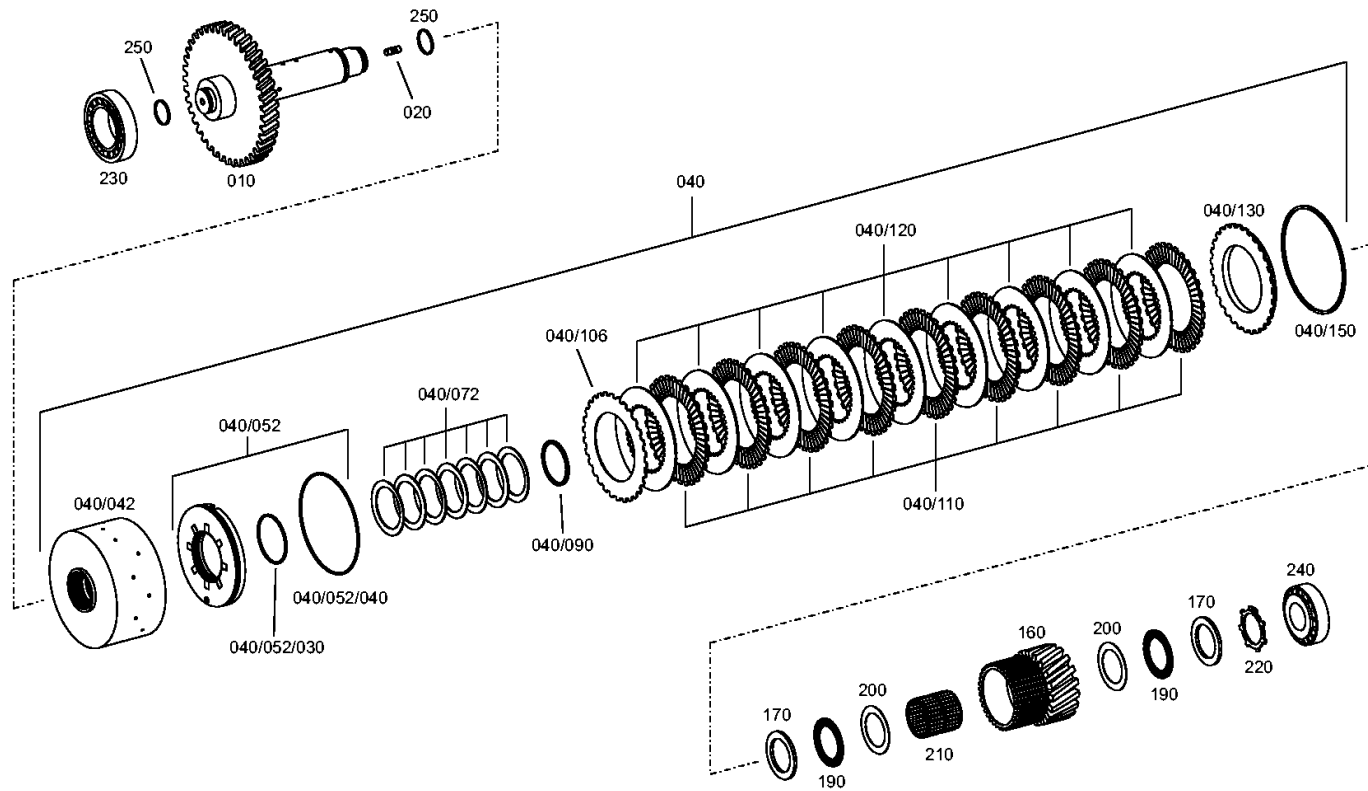
Material number: 4657.055.131

Plant: 465717104300

Material-assembly-group-no: 4657.171.043



5 WG 210 /
COUPLING



Parts list

Page 1 from 2



5 WG 210 /

Material number: 4657.055.131

Plant: 465717104300

Material-assembly-group-no: 4657.171.043

Pos.	Material number	Customer material	Name	Quantity	ME	Amend. no.	Techn. Info.	Rep kit	Alternative material
10	4657.371.041		SHAFT	1		Z00009825310	Z=51		
20	0636.607.039		STUD	1			M10X16		
40	4657.271.009		COUPLING	1					
/42	4657.371.034		DISC CARRIER	1			Z=34*Z=46		
/52	4657.271.008		PISTON	1			KPL. KR/KV/K2/K3/K4		
//30	0634.313.643		O-RING	1			75X3		
//40	0634.313.796		O-RING	1			158X3		
/72	0501.316.541		CUP SPRING	7			68,500X89,000X1,400		
/90	0501.324.228		L-RING	1					
/106	0501.212.371		FRICTION DISC	1					
/110	0501.212.370		DISC	9					
/120	0501.316.592		INNER CLUTCH DISK	9					
/130	4657.371.045		END SHIM	1			Z=34		
/150	---		SNAP RING	1					
---	0730.513.701		SNAP RING	1			h=2,1		
---	0730.513.702		SNAP RING	1			h=2,25		
---	0730.513.703		SNAP RING	1			h=2,4		
---	0730.513.704		SNAP RING	1			h=2,55		
---	0730.513.705		SNAP RING	1			h=2,7		
---	0730.513.706		SNAP RING	1			h=2,85		
---	0730.513.707		SNAP RING	1			h=3,0		
---	0730.513.708		SNAP RING	1			h=3,15		
---	0730.513.709		SNAP RING	1			h=3,30		
---	0730.513.710		SNAP RING	1			h=3,45		
---	0730.513.711		SNAP RING	1			h=3,60		
---	0730.513.712		SNAP RING	1			h=3,75		
---	0730.513.713		SNAP RING	1			h=3,90		
---	0730.513.714		SNAP RING	1			h=4,05		
---	0730.513.715		SNAP RING	1			h=4,20		
160	4657.371.022		IDLER	1			Z=20		
170	0635.290.114		RUNNING DISK	2			55X78X5		
190	0735.368.076		AXIAL NEEDLE CAGE	2			55,0X78,0X3,0		
200	0501.334.358		AXIAL WASHER	2		Z00034899510	55,000X78,000X1,000		
210	0735.321.509		NEEDLE CAGE	1			55,000X63,000X64,000		

Parts list

Page 2 from 2

Material number: 4657.055.131

Plant: 465717104300

Material-assembly-group-no: 4657.171.043



5 WG 210 /

Pos.	Material number	Customer material	Name	Quantity	ME	Amend. no.	Techn. Info.	Rep kit	Alternative material
220	0501.316.378		RETAINING RING	1					
230	0735.300.547		TAPERED ROLLER BEARING	1			66,675X112,712X30,162		
240	0735.300.548		TAPERED ROLLER BEARING	1			44,450X95,250X28,575		
250	0734.401.267		PISTON RING	2			40,000X2,500		

Plant

Page 1 from 1

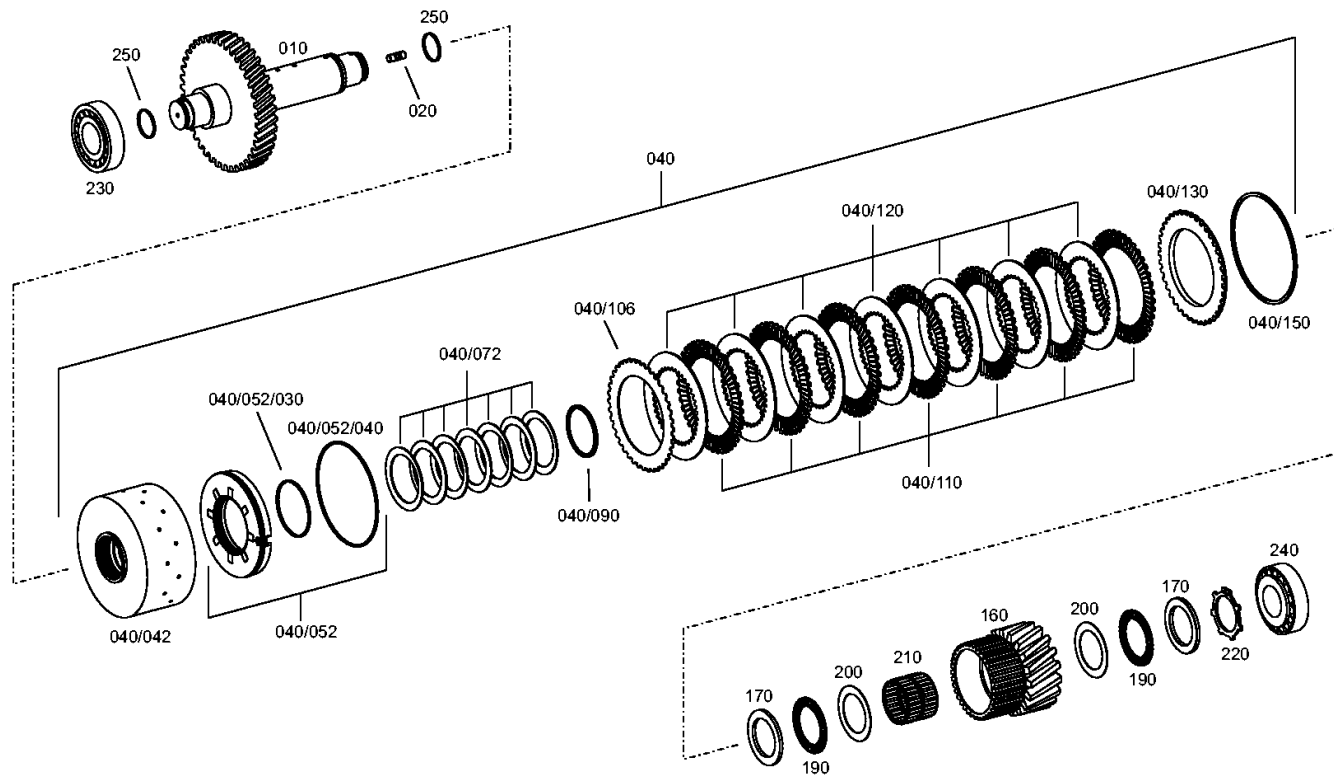
Material number: 4657.055.131

Plant: 465717203400

Material-assembly-group-no: 4657.172.034



5 WG 210 /
COUPLING



Parts list

Page 1 from 2



5 WG 210 /

Material number: 4657.055.131

Plant: 465717203400

Material-assembly-group-no: 4657.172.034

Pos.	Material number	Customer material	Name	Quantity	ME	Amend. no.	Techn. Info.	Rep kit	Alternative material
10	4657.372.022		SHAFT	1		Z00010882110	Z=56		
20	0636.607.039		STUD	1			M10X16		
40	4657.272.005		COUPLING	1					
/42	4657.372.020		DISC CARRIER	1			Z=44*Z=46		
/52	4657.275.006		PISTON	1			KPL.		
//30	0634.313.643		O-RING	1			75X3		
//40	0634.313.719		O-RING	1			142X3		
/72	0501.316.541		CUP SPRING	7			68,500X89,000X1,400		
/90	0501.324.228		L-RING	1					
/106	0501.212.373		OUTER CLUTCH DISK	1					
/110	0501.212.372		DISC	7			h=2.5		
/120	0501.316.591		INNER CLUTCH DISK	7					
/130	0501.316.594		END SHIM	1					
/150	---		SNAP RING	1					
---	0730.513.684		SNAP RING	1			h=2,10		
---	0730.513.685		SNAP RING	1			h=2,25		
---	0730.513.686		SNAP RING	1			h=2,40		
---	0730.513.687		SNAP RING	1			h=2,55		
---	0730.513.688		SNAP RING	1			h=2,70		
---	0730.513.698		SNAP RING	1			h=2.85		
---	0730.513.689		SNAP RING	1			h=3,00		
---	0730.513.690		SNAP RING	1			h=3,15		
---	0730.513.691		SNAP RING	1			h=3,30		
---	0730.513.692		SNAP RING	1			h=3,45		
---	0730.513.693		SNAP RING	1			h=3,60		
---	0730.513.694		SNAP RING	1			h=3,75		
---	0730.513.695		SNAP RING	1			h=3,90		
---	0730.513.696		SNAP RING	1			h=4,05		
---	0730.513.697		SNAP RING	1			h=4,20		
160	4657.372.012		IDLER	1			Z=20		
170	0635.290.114		RUNNING DISK	2			55X78X5		
190	0735.368.076		AXIAL NEEDLE CAGE	2			55,0X78,0X3,0		
200	0501.334.358		AXIAL WASHER	2		Z00034899510	55,000X78,000X1,000		
210	0735.321.508		NEEDLE CAGE	1			K 55,0X63,0X50,0		

Parts list

Page 2 from 2



5 WG 210 /

Material number: 4657.055.131

Plant: 465717203400

Material-assembly-group-no: 4657.172.034

Pos.	Material number	Customer material	Name	Quantity	ME	Amend. no.	Techn. Info.	Rep kit	Alternative material
220	0501.316.378		RETAINING RING	1					
230	0735.300.548		TAPERED ROLLER BEARING	1			44,450X95,250X28,575		
240	0735.300.548		TAPERED ROLLER BEARING	1			44,450X95,250X28,575		
250	0734.401.267		PISTON RING	2			40,000X2,500		

Plant

Page 1 from 1

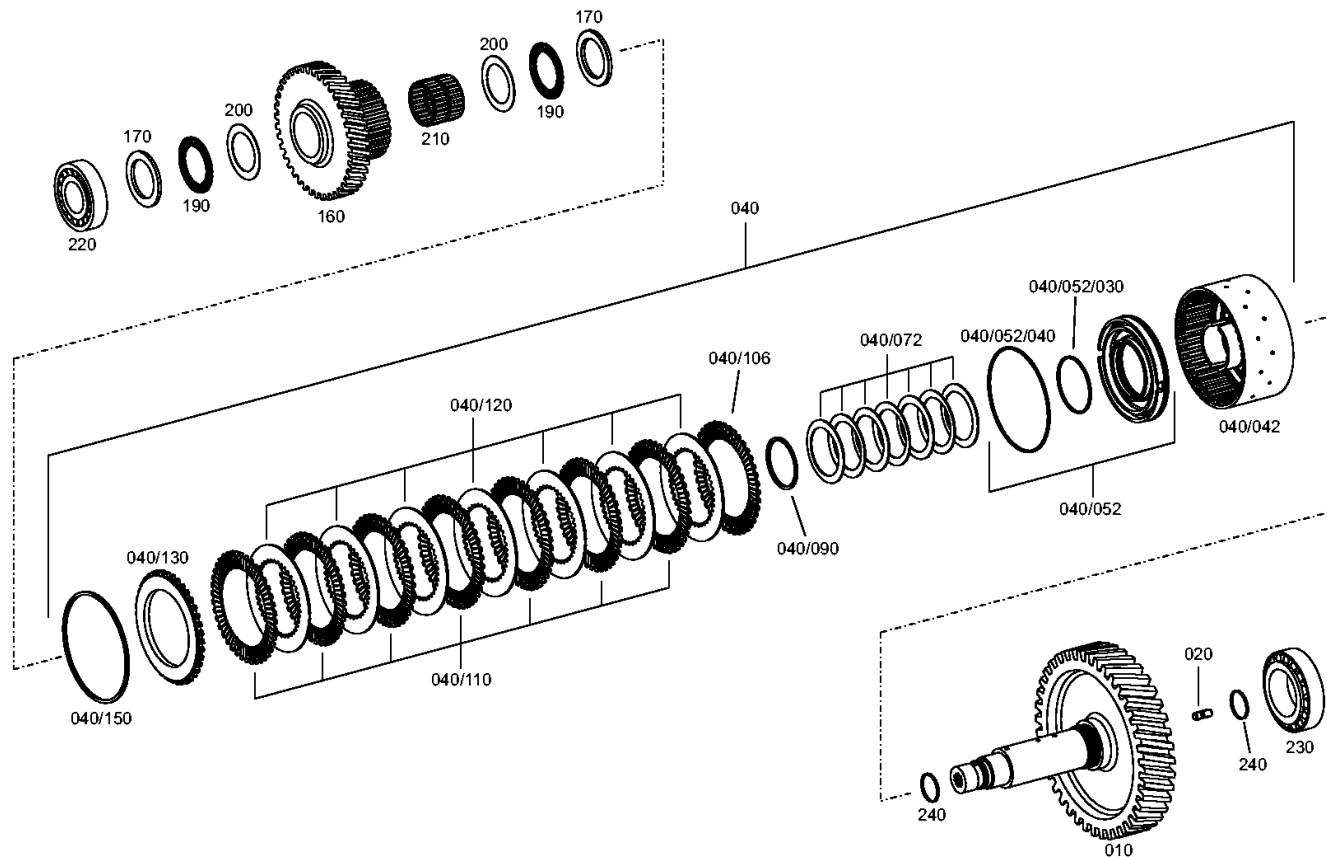
Material number: 4657.055.131

Plant: 465717301900

Material-assembly-group-no: 4657.173.019



5 WG 210 /
COUPLING



Parts list

Page 1 from 2



5 WG 210 /

Material number: 4657.055.131

Plant: 465717301900

Material-assembly-group-no: 4657.173.019

Pos.	Material number	Customer material	Name	Quantity	ME	Amend. no.	Techn. Info.	Rep kit	Alternative material
10	4657.373.023		SHAFT	1		Z00009825310	Z=47		
20	0636.607.039		STUD	1			M10X16		
40	4657.273.006		COUPLING	1					
/42	4657.372.020		DISC CARRIER	1			Z=44*Z=46		
/52	4657.275.006		PISTON	1			KPL.		
//30	0634.313.643		O-RING	1			75X3		
//40	0634.313.719		O-RING	1			142X3		
/72	0501.316.541		CUP SPRING	7			68,500X89,000X1,400		
/90	0501.324.228		L-RING	1					
/106	0501.212.373		OUTER CLUTCH DISK	1					
/110	0501.212.372		DISC	7			h=2.5		
/120	0501.316.591		INNER CLUTCH DISK	7					
/130	0501.316.594		END SHIM	1					
/150	---		SNAP RING	1					
---	0730.513.684		SNAP RING	1			h=2,10		
---	0730.513.685		SNAP RING	1			h=2,25		
---	0730.513.686		SNAP RING	1			h=2,40		
---	0730.513.687		SNAP RING	1			h=2,55		
---	0730.513.688		SNAP RING	1			h=2,70		
---	0730.513.698		SNAP RING	1			h=2.85		
---	0730.513.689		SNAP RING	1			h=3,00		
---	0730.513.690		SNAP RING	1			h=3,15		
---	0730.513.691		SNAP RING	1			h=3,30		
---	0730.513.692		SNAP RING	1			h=3,45		
---	0730.513.693		SNAP RING	1			h=3,60		
---	0730.513.694		SNAP RING	1			h=3,75		
---	0730.513.695		SNAP RING	1			h=3,90		
---	0730.513.696		SNAP RING	1			h=4,05		
---	0730.513.697		SNAP RING	1			h=4,20		
160	4657.373.004		IDLER	1			Z=55		
170	0635.290.114		RUNNING DISK	2			55X78X5		
190	0735.368.076		AXIAL NEEDLE CAGE	2			55,0X78,0X3,0		
200	0501.334.358		AXIAL WASHER	2		Z00034899510	55,000X78,000X1,000		
210	0735.321.508		NEEDLE CAGE	1			K 55,0X63,0X50,0		

Parts list

Page 2 from 2



5 WG 210 /

Material number: 4657.055.131

Plant: 465717301900

Material-assembly-group-no: 4657.173.019

Pos.	Material number	Customer material	Name	Quantity	ME	Amend. no.	Techn. Info.	Rep kit	Alternative material
220	0735.300.548		TAPERED ROLLER BEARING	1			44,450X95,250X28,575		
230	0735.300.547		TAPERED ROLLER BEARING	1			66,675X112,712X30,162		
240	0734.401.267		PISTON RING	2			40,000X2,500		

Plant

Page 1 from 1

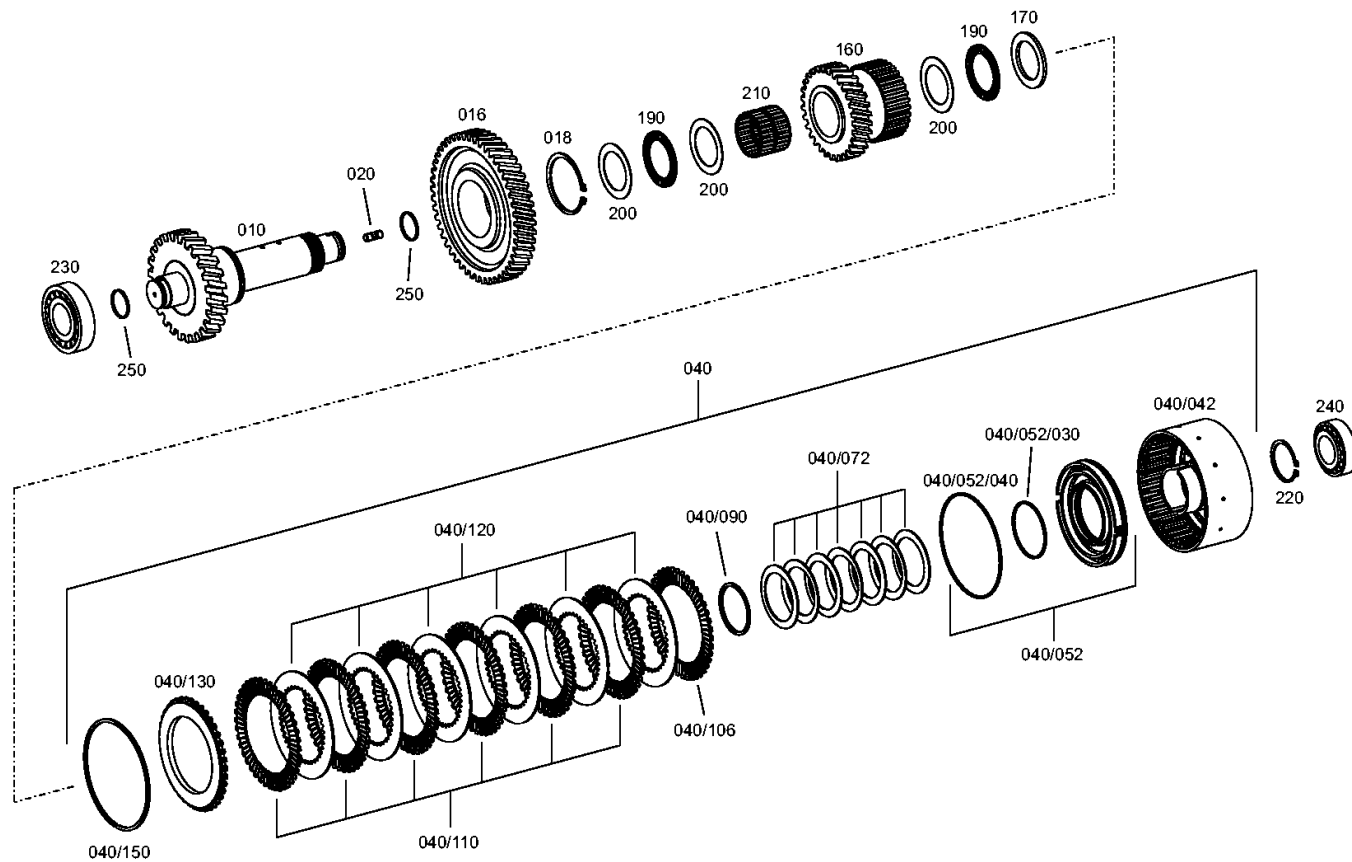
Material number: 4657.055.131

Plant: 465717404900

Material-assembly-group-no: 4657.174.049



5 WG 210 /
COUPLING



Parts list

Page 1 from 2



5 WG 210 /

Material number: 4657.055.131

Plant: 465717404900

Material-assembly-group-no: 4657.174.049

Pos.	Material number	Customer material	Name	Quantity	ME	Amend. no.	Techn. Info.	Rep kit	Alternative material
10	4657.374.039		SHAFT	1		Z00009825310	Z=32		
16	4657.374.008		GEAR	1			Z=63		
18	0630.501.050		RETAINING RING	1			80X2,5		
20	0636.607.039		STUD	1			M10X16		
40	4657.274.016		CLUTCH	1					
/42	4657.374.037		DISC CARRIER	1			Z=44*Z=42		
/52	4657.275.006		PISTON	1			KPL.		
//30	0634.313.643		O-RING	1			75X3		
//40	0634.313.719		O-RING	1			142X3		
/72	0501.316.541		CUP SPRING	7			68,500X89,000X1,400		
/90	0501.324.228		L-RING	1					
/106	0501.212.373		OUTER CLUTCH DISK	1					
/110	0501.212.372		DISC	6			h=2.5		
/120	0501.316.591		INNER CLUTCH DISK	6					
/130	0501.316.594		END SHIM	1					
/150	---		SNAP RING	1					
---	0730.513.684		SNAP RING	1			h=2,10		
---	0730.513.685		SNAP RING	1			h=2,25		
---	0730.513.686		SNAP RING	1			h=2,40		
---	0730.513.687		SNAP RING	1			h=2,55		
---	0730.513.688		SNAP RING	1			h=2,70		
---	0730.513.698		SNAP RING	1			h=2.85		
---	0730.513.689		SNAP RING	1			h=3,00		
---	0730.513.690		SNAP RING	1			h=3,15		
---	0730.513.691		SNAP RING	1			h=3,30		
---	0730.513.692		SNAP RING	1			h=3,45		
---	0730.513.693		SNAP RING	1			h=3,60		
---	0730.513.694		SNAP RING	1			h=3,75		
---	0730.513.695		SNAP RING	1			h=3,90		
---	0730.513.696		SNAP RING	1			h=4,05		
---	0730.513.697		SNAP RING	1			h=4,20		
160	4657.374.011		IDLER	1			Z=38		
170	0635.290.114		RUNNING DISK	1			55X78X5		
190	0735.368.076		AXIAL NEEDLE CAGE	2			55,0X78,0X3,0		

Parts list

Page 2 from 2



5 WG 210 /

Material number: 4657.055.131

Plant: 465717404900

Material-assembly-group-no: 4657.174.049

Pos.	Material number	Customer material	Name	Quantity	ME	Amend. no.	Techn. Info.	Rep kit	Alternative material
200	0501.334.358		AXIAL WASHER	3		Z00034899510	55,000X78,000X1,000		
210	0735.321.508		NEEDLE CAGE	1			K 55,0X63,0X50,0		
220	0630.501.038		RETAINING RING	1			55X2		
230	0735.300.548		TAPERED ROLLER BEARING	1			44,450X95,250X28,575		
240	0735.300.550		TAPERED ROLLER BEARING	1			39,688X76,200X25,654		
250	0734.401.267		PISTON RING	2			40,000X2,500		

Plant

Page 1 from 1

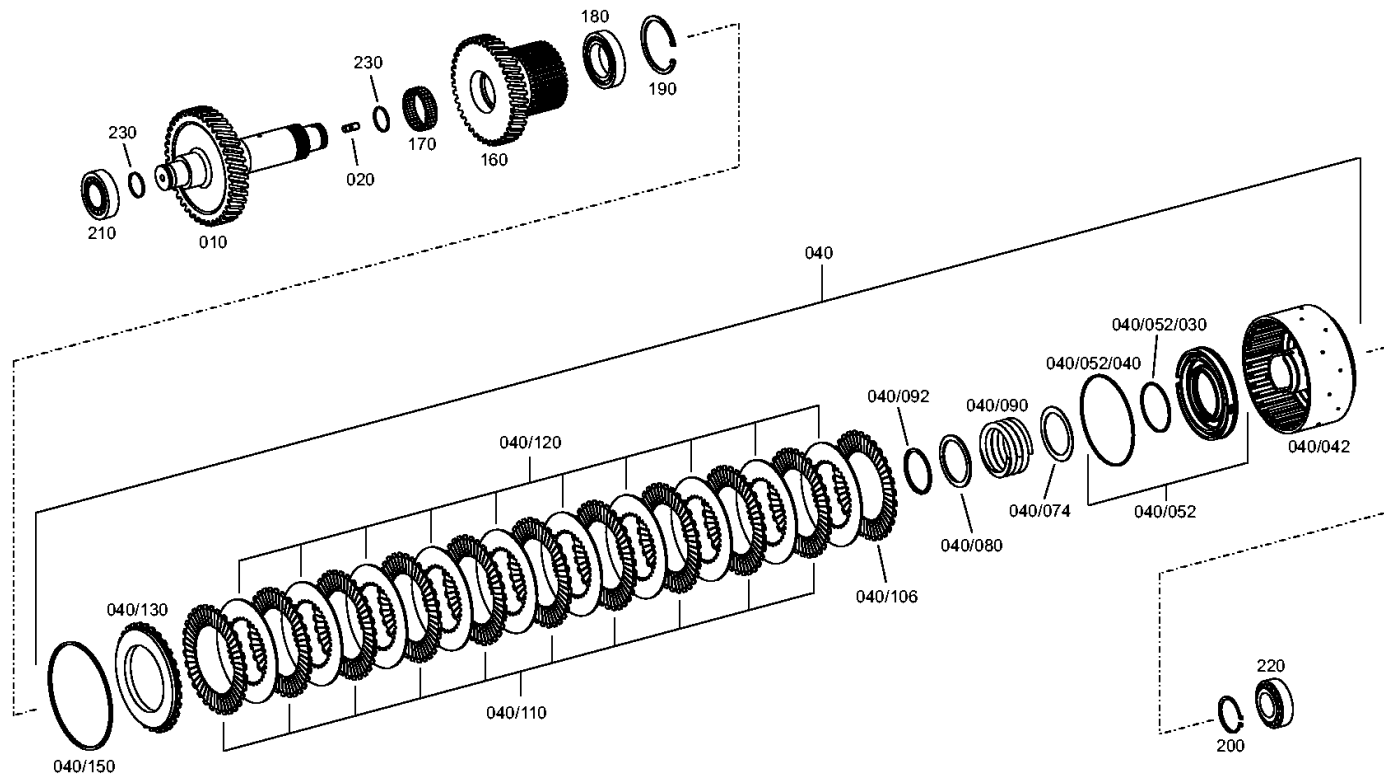
Material number: 4657.055.131

Plant: 465717501400

Material-assembly-group-no: 4657.175.014



5 WG 210 /
COUPLING



Parts list

Page 1 from 2



5 WG 210 /

Material number: 4657.055.131

Plant: 465717501400

Material-assembly-group-no: 4657.175.014

Pos.	Material number	Customer material	Name	Quantity	ME	Amend. no.	Techn. Info.	Rep kit	Alternative material
10	4657.375.020		SHAFT	1		Z00009825310	Z=55*D-Teil		
20	0636.607.039		STUD	1			M10X16		
40	4657.275.010		CLUTCH	1					
/42	4657.375.019		DISC CARRIER	1			Z=34*Z=42		
/52	4657.275.006		PISTON	1			KPL.		
//30	0634.313.643		O-RING	1			75X3		
//40	0634.313.719		O-RING	1			142X3		
/74	0730.110.373		WASHER	1					
/80	0730.011.028		SUPPORTING RING	1					
/90	0732.042.711		COMPRESSION SPRING	1					
/92	0501.324.228		L-RING	1					
/106	0501.212.371		FRICTION DISC	1					
/110	0501.212.370		DISC	10					
/120	0501.316.592		INNER CLUTCH DISK	10					
/130	4657.371.045		END SHIM	1			Z=34		
/150	---		SNAP RING	1					
---	0730.513.701		SNAP RING	1			h=2,1		
---	0730.513.702		SNAP RING	1			h=2,25		
---	0730.513.703		SNAP RING	1			h=2,4		
---	0730.513.704		SNAP RING	1			h=2,55		
---	0730.513.705		SNAP RING	1			h=2,7		
---	0730.513.706		SNAP RING	1			h=2,85		
---	0730.513.707		SNAP RING	1			h=3,0		
---	0730.513.708		SNAP RING	1			h=3,15		
---	0730.513.709		SNAP RING	1			h=3,30		
---	0730.513.710		SNAP RING	1			h=3,45		
---	0730.513.711		SNAP RING	1			h=3,60		
---	0730.513.712		SNAP RING	1			h=3,75		
---	0730.513.713		SNAP RING	1			h=3,90		
---	0730.513.714		SNAP RING	1			h=4,05		
---	0730.513.715		SNAP RING	1			h=4,20		
160	4657.375.003		IDLER	1			Z=52		
170	0735.321.408		NEEDLE CAGE	1			K 60,0X68,0X20,0		
180	0735.301.814		BALL BEARING	1			55,000X90,000X18,000		

Parts list

Page 2 from 2



5 WG 210 /

Material number: 4657.055.131

Plant: 465717501400

Material-assembly-group-no: 4657.175.014

Pos.	Material number	Customer material	Name	Quantity	ME	Amend. no.	Techn. Info.	Rep kit	Alternative material
190	0630.502.042		RETAINING RING	1			90X3		
200	0630.501.038		RETAINING RING	1			55X2		
210	0735.300.550		TAPERED ROLLER BEARING	1			39,688X76,200X25,654		
220	0735.300.550		TAPERED ROLLER BEARING	1			39,688X76,200X25,654		
230	0734.401.267		PISTON RING	2			40,000X2,500		

Plant

Page 1 from 1

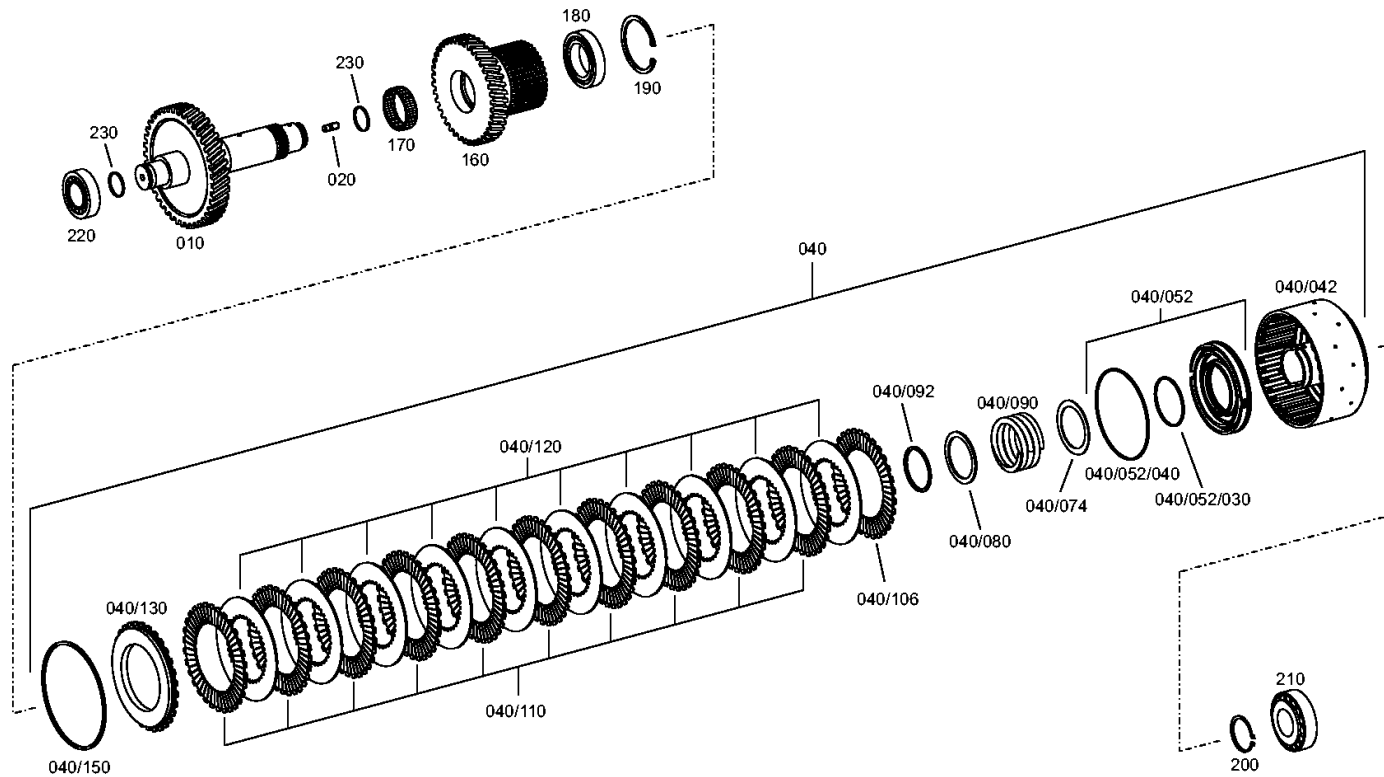
Material number: 4657.055.131

Plant: 465717601700

Material-assembly-group-no: 4657.176.017



5 WG 210 /
COUPLING



Parts list

Page 1 from 2



5 WG 210 /

Material number: 4657.055.131

Plant: 465717601700

Material-assembly-group-no: 4657.176.017

Pos.	Material number	Customer material	Name	Quantity	ME	Amend. no.	Techn. Info.	Rep kit	Alternative material
10	4657.376.010		SHAFT	1		Z00009825310	Z=58		
20	0636.607.039		STUD	1			M10X16		
40	4657.275.010		CLUTCH	1					
/42	4657.375.019		DISC CARRIER	1			Z=34*Z=42		
/52	4657.275.006		PISTON	1			KPL.		
//30	0634.313.643		O-RING	1			75X3		
//40	0634.313.719		O-RING	1			142X3		
/74	0730.110.373		WASHER	1					
/80	0730.011.028		SUPPORTING RING	1					
/90	0732.042.711		COMPRESSION SPRING	1					
/92	0501.324.228		L-RING	1					
/106	0501.212.371		FRICTION DISC	1					
/110	0501.212.370		DISC	10					
/120	0501.316.592		INNER CLUTCH DISK	10					
/130	4657.371.045		END SHIM	1			Z=34		
/150	---		SNAP RING	1					
---	0730.513.701		SNAP RING	1			h=2,1		
---	0730.513.702		SNAP RING	1			h=2,25		
---	0730.513.703		SNAP RING	1			h=2,4		
---	0730.513.704		SNAP RING	1			h=2,55		
---	0730.513.705		SNAP RING	1			h=2,7		
---	0730.513.706		SNAP RING	1			h=2,85		
---	0730.513.707		SNAP RING	1			h=3,0		
---	0730.513.708		SNAP RING	1			h=3,15		
---	0730.513.709		SNAP RING	1			h=3,30		
---	0730.513.710		SNAP RING	1			h=3,45		
---	0730.513.711		SNAP RING	1			h=3,60		
---	0730.513.712		SNAP RING	1			h=3,75		
---	0730.513.713		SNAP RING	1			h=3,90		
---	0730.513.714		SNAP RING	1			h=4,05		
---	0730.513.715		SNAP RING	1			h=4,20		
160	4657.375.003		IDLER	1			Z=52		
170	0735.321.408		NEEDLE CAGE	1			K 60,0X68,0X20,0		
180	0735.301.814		BALL BEARING	1			55,000X90,000X18,000		

Parts list

Page 2 from 2



5 WG 210 /

Material number: 4657.055.131

Plant: 465717601700

Material-assembly-group-no: 4657.176.017

Pos.	Material number	Customer material	Name	Quantity	ME	Amend. no.	Techn. Info.	Rep kit	Alternative material
190	0630.502.042		RETAINING RING	1			90X3		
200	0630.501.038		RETAINING RING	1			55X2		
210	0735.300.548		TAPERED ROLLER BEARING	1			44,450X95,250X28,575		
220	0735.300.550		TAPERED ROLLER BEARING	1			39,688X76,200X25,654		
230	0734.401.267		PISTON RING	2			40,000X2,500		

Plant

Page 1 from 1

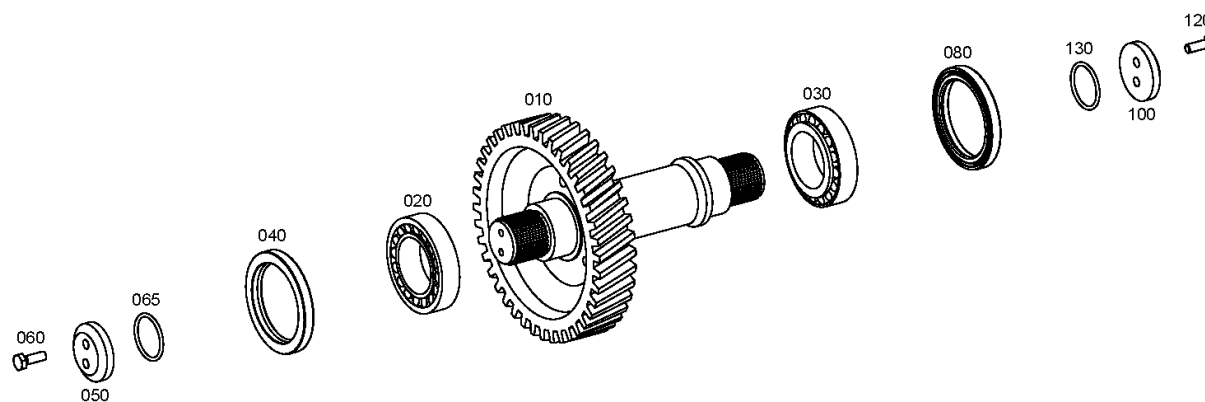
Material number: 4657.055.131

Plant: 465710301000

Material-assembly-group-no: 4657.103.010



5 WG 210 /
OUTPUT



Parts list

Page 1 from 1



5 WG 210 /

Material number: 4657.055.131

Plant: 465710301000

Material-assembly-group-no: 4657.103.010

Pos.	Material number	Customer material	Name	Quantity	ME	Amend. no.	Techn. Info.	Rep kit	Alternative material
10	4657.303.043		OUTPUT SHAFT	1		K01317/0610	Z=42*Z=46*Z=42		
20	0735.300.547		TAPERED ROLLER BEARING	1			66,675X112,712X30,162		
30	0735.300.547		TAPERED ROLLER BEARING	1			66,675X112,712X30,162		
40	0750.111.116		SHAFT SEAL	1			90,0X120,0X13,0		
50	4644.303.259		WASHER	1			68,000X15,500		
60	0636.100.787		HEXAGON SCREW	2			M10X30		
65	0634.303.466		O-RING	1			48X4		
80	0750.111.116		SHAFT SEAL	1			90,0X120,0X13,0		
100	4644.303.259		WASHER	1			68,000X15,500		
120	0636.100.787		HEXAGON SCREW	2			M10X30		
130	0634.303.466		O-RING	1			48X4		

Plant

Page 1 from 1

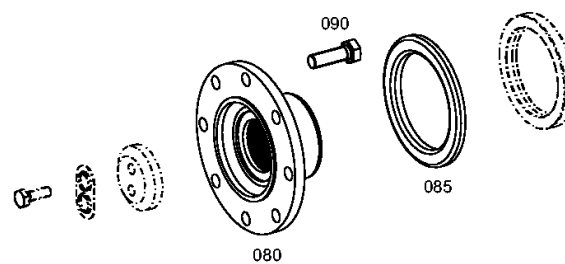
Material number: 4657.055.131

Plant: 465710342900

Material-assembly-group-no: 4657.103.429



5 WG 210 /
OUTPUT



Parts list

Page 1 from 1



5 WG 210 /

Material number: 4657.055.131

Plant: 465710342900

Material-assembly-group-no: 4657.103.429

Pos.	Material number	Customer material	Name	Quantity	ME	Amend. no.	Techn. Info.	Rep kit	Alternative material
80	4657.303.034		OUTPUT FLANGE	1		K01229/0210			
85	4657.303.018		SCREEN SHEET	1		K01229/0210			
90	0636.020.082		HEXAGON SCREW	8			M14X1,5X45		

Plant

Page 1 from 1

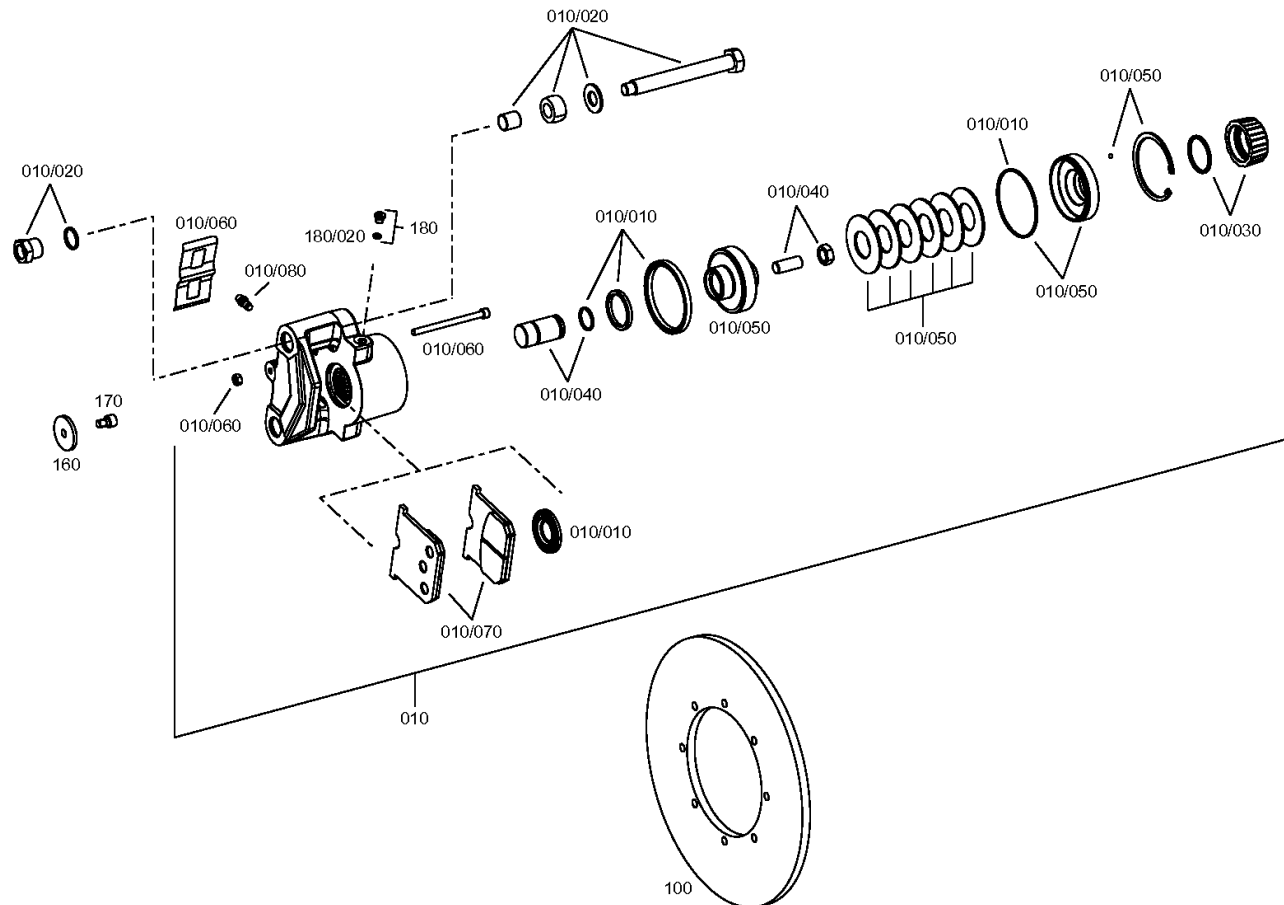
Material number: 4657.055.131

Plant: 465610901800

Material-assembly-group-no: 4656.109.018



5 WG 210 /
PARKING BRAKE



Parts list

Page 1 from 1



5 WG 210 /

Material number: 4657.055.131

Plant: 465610901800

Material-assembly-group-no: 4656.109.018

Pos.	Material number	Customer material	Name	Quantity	ME	Amend. no.	Techn. Info.	Rep kit	Alternative material
10	0501.216.078		BRAKE	1					
/10	0501.298.641		SEAL KIT	1					
/20	0501.298.643		REPAIR KIT	1					
/30	0501.298.558		REPAIR KIT	1					
/40	0501.298.559		REPAIR KIT	1					
/50	0501.298.642		REPAIR KIT	1					
/60	0501.298.561		REPAIR KIT	1					
/70	0501.298.562		BRAKE LINING KIT	1					
/80	0501.209.288		BREATHER	1					
100	4462.301.207		BRAKE DISC	1					
160	0730.109.980		WASHER	1			A=5,00		
170	0636.102.336		CAP SCREW	1			M10X16		
180	4475.280.197		SCREW PLUG	1			M10X1 KPL.MIT O-RING		
/20	0634.303.280		O-RING	1			8X1,5		

Plant

Page 1 from 1

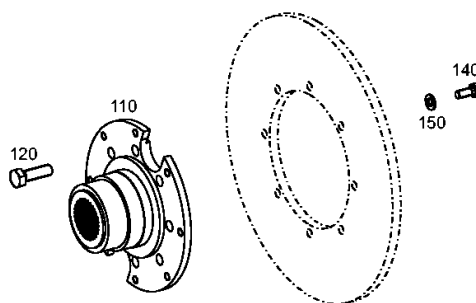
Material number: 4657.055.131

Plant: 465710940900

Material-assembly-group-no: 4657.109.409



5 WG 210 /
PARKING BRAKE



Parts list

Page 1 from 1



5 WG 210 /

Material number: 4657.055.131

Plant: 465710940900

Material-assembly-group-no: 4657.109.409

Pos.	Material number	Customer material	Name	Quantity	ME	Amend. no.	Techn. Info.	Rep kit	Alternative material
110	4644.309.001		OUTPUT FLANGE	1					
120	0636.020.082		HEXAGON SCREW	8			M14X1,5X45		
140	0636.015.166		HEXAGON SCREW	8			M10X25		
150	0630.001.014		WASHER	8					

Plant

Page 1 from 1

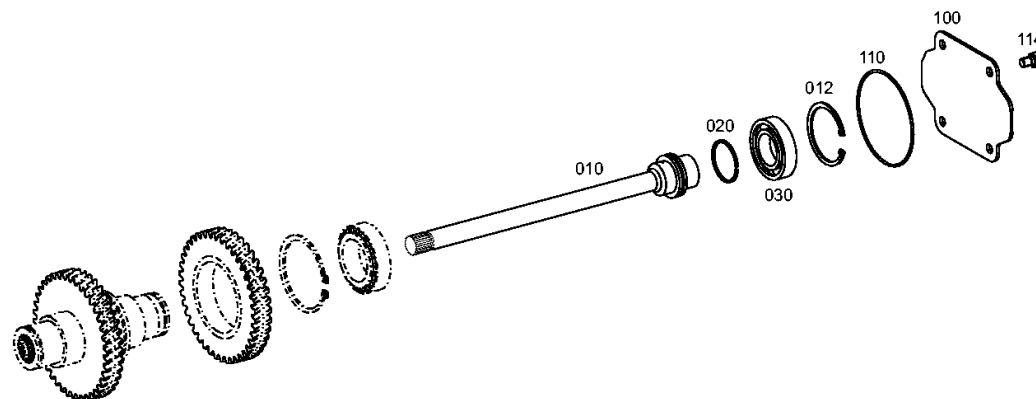
Material number: 4657.055.131

Plant: 465715400400

Material-assembly-group-no: 4657.154.004



5 WG 210 /
POWER TAKE-OFF



Parts list

Page 1 from 1



5 WG 210 /

Material number: 4657.055.131

Plant: 465715400400

Material-assembly-group-no: 4657.154.004

Pos.	Material number	Customer material	Name	Quantity	ME	Amend. no.	Techn. Info.	Rep kit	Alternative material
10	4657.354.020		PUMP SHAFT	1		K01714/9710	Z=21*Z=14		
12	0630.502.040		RETAINING RING	1			85X3		
20	0634.402.557		R-RING	1		K01706/0010	60X3		
30	0750.116.008		BALL BEARING	1			45,000X85,000X19,000		
100	4656.354.009		COVER PLATE	1		K00889/9710			
110	0634.304.616		O-RING	1			130X3		
114	0636.102.411		HEXAGON SCREW	4			M12X18		

Plant

Page 1 from 1

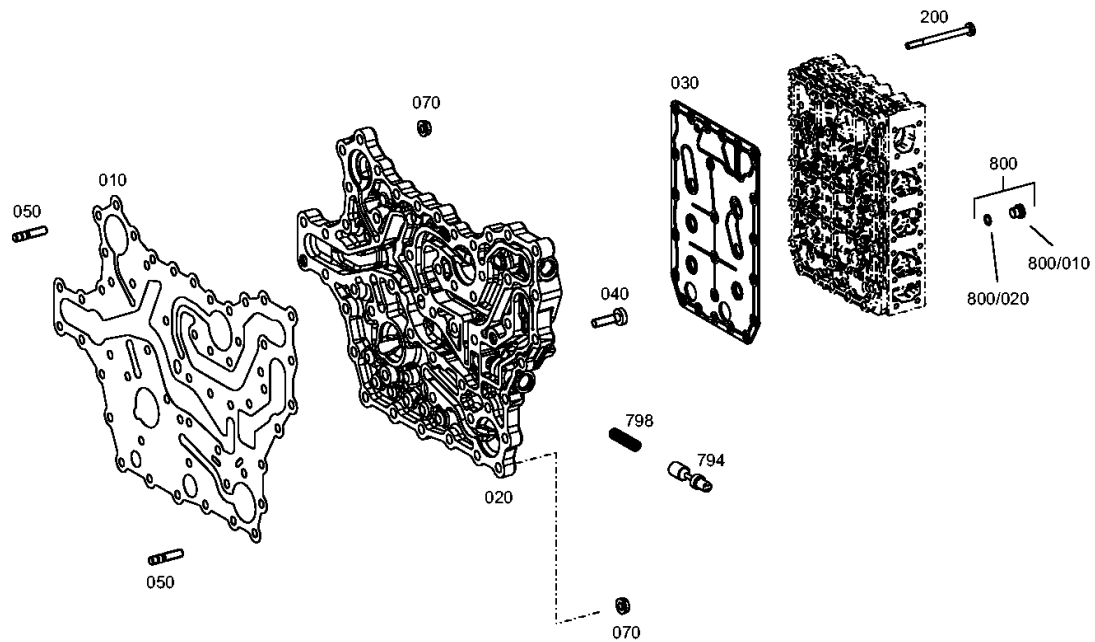
Material number: 4657.055.131

Plant: 465710601200

Material-assembly-group-no: 4657.106.012



5 WG 210 /
SHIFT SYSTEM



Parts list

Page 1 from 1



5 WG 210 /

Material number: 4657.055.131

Plant: 465710601200

Material-assembly-group-no: 4657.106.012

Pos.	Material number	Customer material	Name	Quantity	ME	Amend. no.	Techn. Info.	Rep kit	Alternative material
10	4657.306.022		GASKET	1					
20	4657.306.029		DUCT PLATE	1					
30	4656.306.179		INTERMEDIATE SHEET	1		Z00016403510			
40	0736.300.233		TORX SCREW	36			M8X30		
50	0636.102.496		STUD	14			M8X25		
70	0637.100.139		HEXAGON NUT	14			M8		
200	0736.300.093		TORX SCREW	23			M6X76		
794	4657.306.031		PISTON	1					
798	0732.042.761		COMPRESSION SPRING	1			D=1,6		
800	4475.280.197		SCREW PLUG	8			M10X1 KPL.MIT O-RING		
/20	0634.303.280		O-RING	1			8X1,5		

Plant

Page 1 from 1

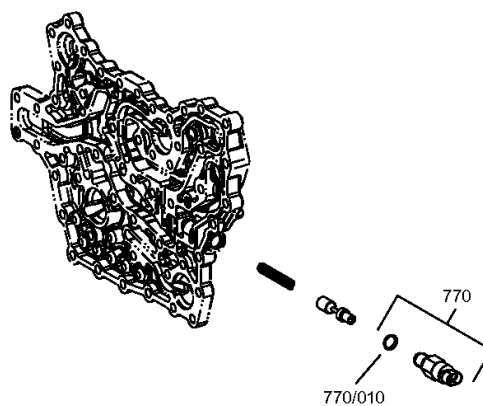
Material number: 4657.055.131

Plant: 465710640720

Material-assembly-group-no: 4657.106.407



5 WG 210 /
SHIFT SYSTEM



Parts list

Page 1 from 1



5 WG 210 /

Material number: 4657.055.131

Plant: 465710640720

Material-assembly-group-no: 4657.106.407

Pos.	Material number	Customer material	Name	Quantity	ME	Amend. no.	Techn. Info.	Rep kit	Alternative material
770	0501.210.966		TAPPET SWITCH	1					
/10	0634.306.523		O-RING	1			13X2		

Plant

Page 1 from 2

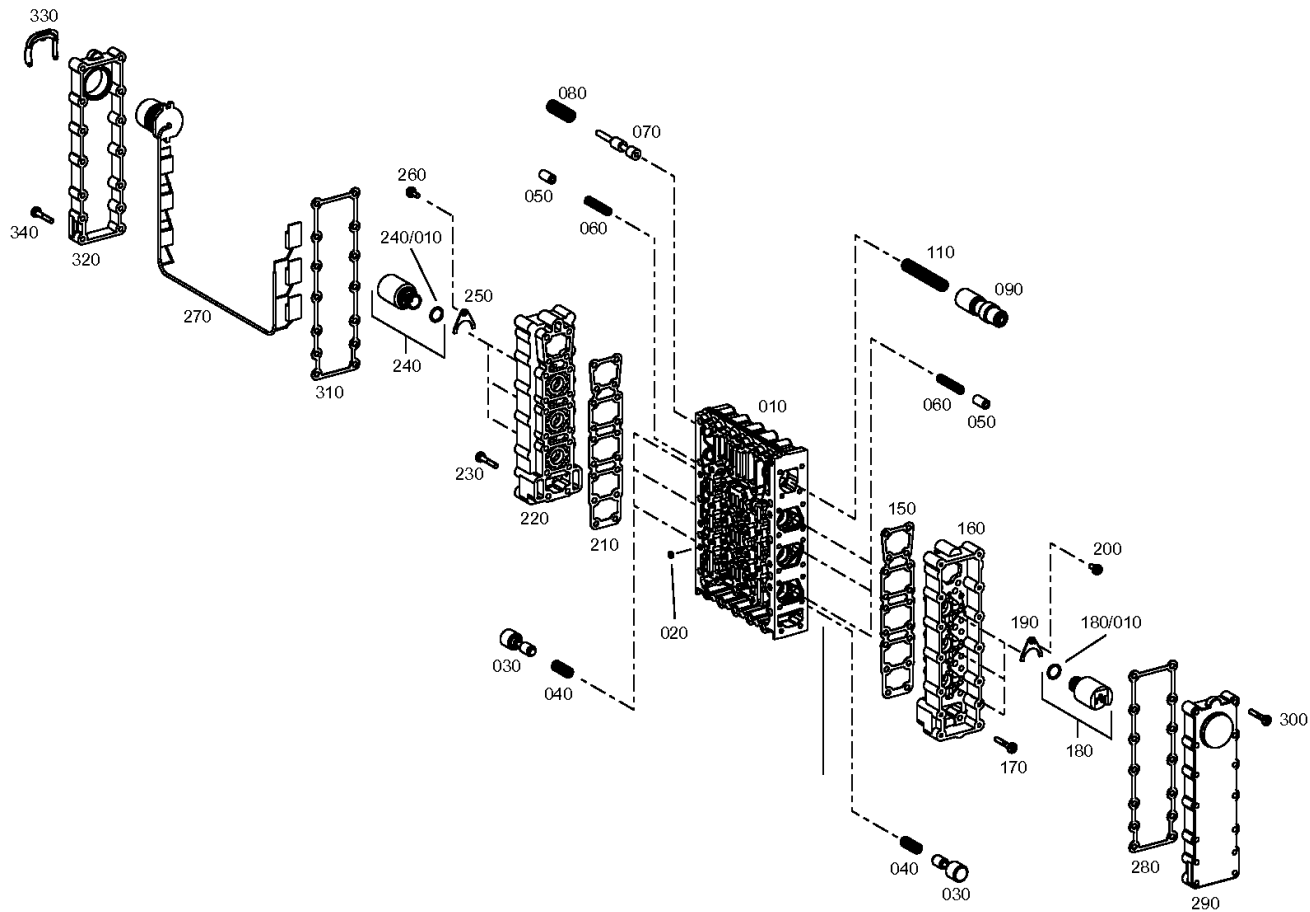
Material number: 4657.055.131

Plant: 465615901921

Material-assembly-group-no: 4656.159.019



5 WG 210 /
SHIFT SYSTEM



Plant

Page 2 from 2

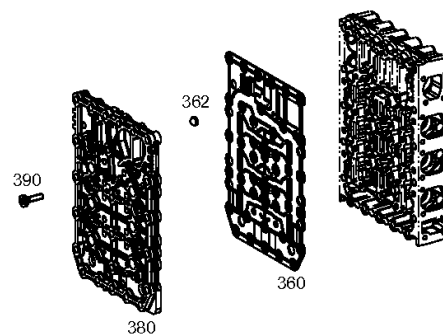
Material number: 4657.055.131

Plant: 465615901922

Material-assembly-group-no: 4656.159.019



5 WG 210 /
SHIFT SYSTEM



Parts list

Page 1 from 2



5 WG 210 /

Material number: 4657.055.131

Plant: 465615901921

Material-assembly-group-no: 4656.159.019

Pos.	Material number	Customer material	Name	Quantity	ME	Amend. no.	Techn. Info.	Rep kit	Alternative material
10	4656.306.170		VALVE BLOCK	1					
20	0730.361.070		ORIFICE	6			D=0,8 IN 0730 361 120(2)		
30	4656.306.095		PISTON	6					
40	0732.042.538		COMPRESSION SPRING	6					
50	4656.306.013		PISTON	6					
60	0732.042.539		COMPRESSION SPRING	6					
70	4656.306.074		PISTON	1					
80	0732.042.631		COMPRESSION SPRING	1					
90	4656.306.152		CONTROL PISTON	1					
110	0732.042.719		COMPRESSION SPRING	1					
150	4656.306.158		GASKET	1					
160	4656.306.116		HOUSING	1					
170	0736.300.229		TORX SCREW	18			M5X30		
180	0501.314.770		PRESSURE REGULATOR	3			VR030AA032D03 MAGNET-SCHULT		
/10	0734.313.134		O-RING	1					
190	1043.326.045		FIXING PLATE	3					
200	0736.101.094		TORX SCREW	3			M5X12		
210	4656.306.158		GASKET	1					
220	4656.306.116		HOUSING	1					
230	0736.300.229		TORX SCREW	18			M5X30		
240	0501.314.770		PRESSURE REGULATOR	3			VR030AA032D03 MAGNET-SCHULT		
/10	0734.313.134		O-RING	1					
250	1043.326.045		FIXING PLATE	3					
260	0736.101.094		TORX SCREW	3			M5X12		
270	4656.206.006		WIRING HARNESS	1			KPL.HSG-94 SERIE 1		
280	4656.306.157		GASKET	1					
290	4656.306.054		COVER	1					
300	0736.300.229		TORX SCREW	14			M5X30		
310	4656.306.157		GASKET	1					
320	4656.306.055		COVER	1					
330	1058.327.026		RETAINING CLAMP	1					
340	0736.300.229		TORX SCREW	14			M5X30		
360	4656.306.180		INTERMEDIATE SHEET	1		Z00016403510			
362	0501.316.715		SCREEN	6					

Parts list

Page 2 from 2



5 WG 210 /

Material number: 4657.055.131

Plant: 465615901921

Material-assembly-group-no: 4656.159.019

Pos.	Material number	Customer material	Name	Quantity	ME	Amend. no.	Techn. Info.	Rep kit	Alternative material
380	4656.306.150		DUCT PLATE	1					
390	0736.300.092		TORX SCREW	18			M6X23		

Plant

Page 1 from 1

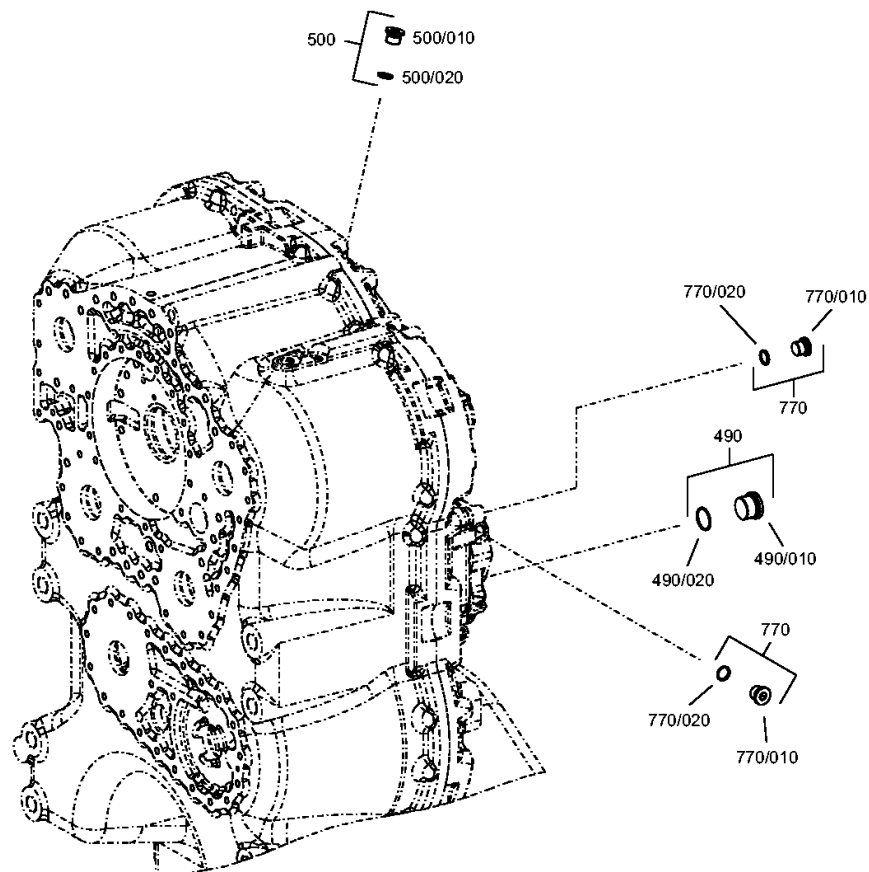
Material number: 4657.055.131

Plant: 465712300300

Material-assembly-group-no: 4657.123.003



5 WG 210 /
CONTROL UNIT



Parts list

Page 1 from 1



5 WG 210 /

Material number: 4657.055.131

Plant: 465712300300

Material-assembly-group-no: 4657.123.003

Pos.	Material number	Customer material	Name	Quantity	ME	Amend. no.	Techn. Info.	Rep kit	Alternative material
490	4475.280.209		SCREW PLUG	1					
/20	0634.313.233		O-RING	1			23X2		
500	4475.280.208		SCREW PLUG	1					
/20	0634.316.523		O-RING	1			13X2		
770	4475.280.208		SCREW PLUG	2					
/20	0634.316.523		O-RING	1			13X2		

Plant

Page 1 from 1

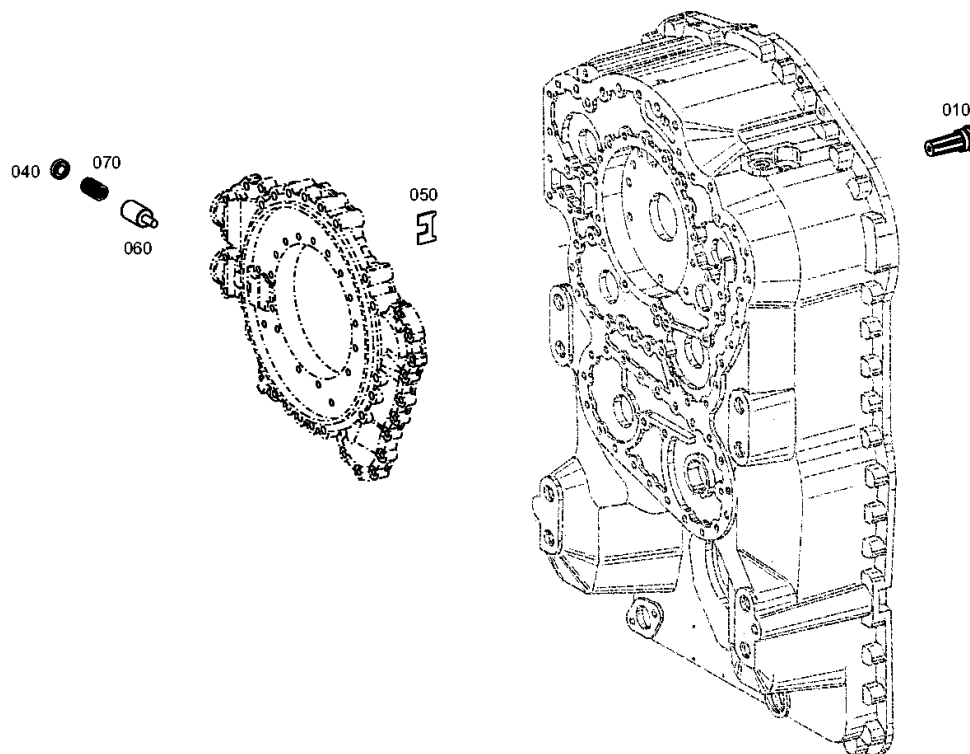
Material number: 4657.055.131

Plant: 465612000300

Material-assembly-group-no: 4656.120.003



5 WG 210 /
PRESSURE REGULATOR



Parts list

Page 1 from 1



5 WG 210 /

Material number: 4657.055.131

Plant: 465612000300

Material-assembly-group-no: 4656.120.003

Pos.	Material number	Customer material	Name	Quantity	ME	Amend. no.	Techn. Info.	Rep kit	Alternative material
10	0501.211.384		VALVE	1		K00720/9810			
40	4656.306.077		PRESSURE PLATE	1					
50	4656.306.078		LOCKING PLATE	1					
60	4656.306.107		PISTON	1		K00720/9810			
70	0732.042.767		COMPRESSION SPRING	1		K00720/9810			

Plant

Page 1 from 1

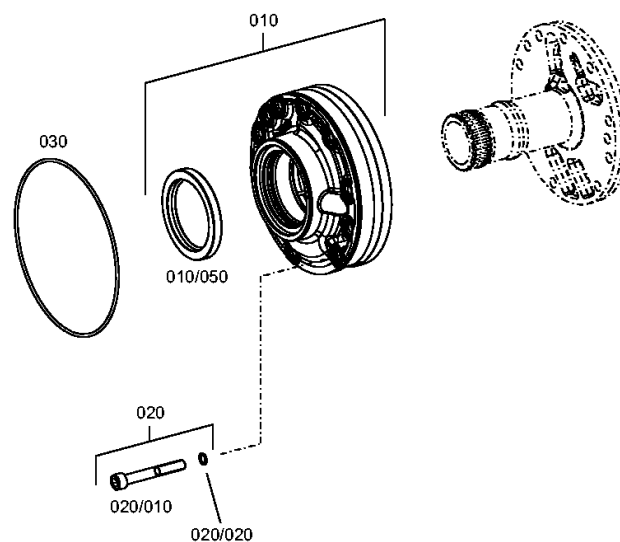
Material number: 4657.055.131

Plant: 465712200500

Material-assembly-group-no: 4657.122.005



5 WG 210 /
PRESSURE OIL PUMP



Parts list

Page 1 from 1



5 WG 210 /

Material number: 4657.055.131

Plant: 465712200500

Material-assembly-group-no: 4657.122.005

Pos.	Material number	Customer material	Name	Quantity	ME	Amend. no.	Techn. Info.	Rep kit	Alternative material
10	0501.214.895		GEAR PUMP	1					
/50	0634.311.837		SHAFT SEAL	1			75X95X10		
20	4475.280.205		CAP SCREW	10					
/20	0634.313.215		O-RING	1			9,5X1,6		
30	0634.313.999		O-RING	1		K01165/0610	182X3		

Plant

Page 1 from 1

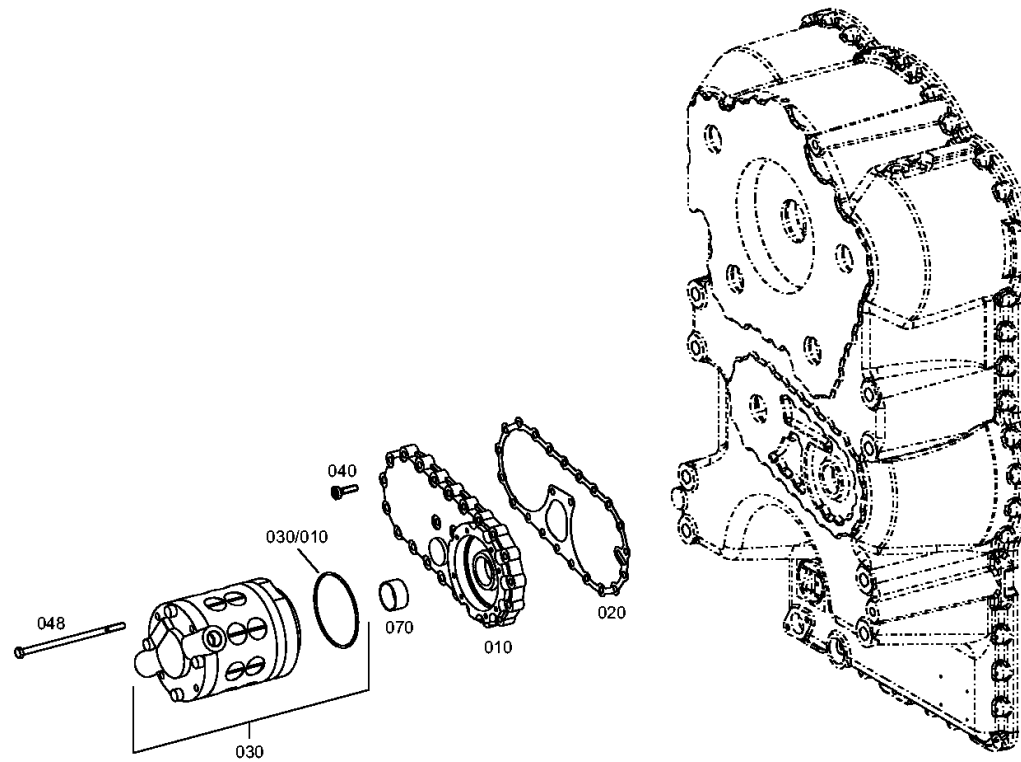
Material number: 4657.055.131

Plant: 465713700400

Material-assembly-group-no: 4657.137.004



5 WG 210 /
EMERGENCY STEERING PUMP



Parts list

Page 1 from 1



5 WG 210 /

Material number: 4657.055.131

Plant: 465713700400

Material-assembly-group-no: 4657.137.004

Pos.	Material number	Customer material	Name	Quantity	ME	Amend. no.	Techn. Info.	Rep kit	Alternative material
10	4656.337.001		COVER	1					
20	4656.337.010		GASKET	1		K00072/0110			
30	8607.955.145		PISTON PUMP	1					
/260	0634.316.304		O-RING	1			100X3		
40	0736.300.233		TORX SCREW	23			M8X30		
48	0636.010.416		HEXAGON SCREW	4			M8X170		
70	0735.300.798		PLAIN BEARING	1			37,000X40,000X20,000		

Plant

Page 1 from 1

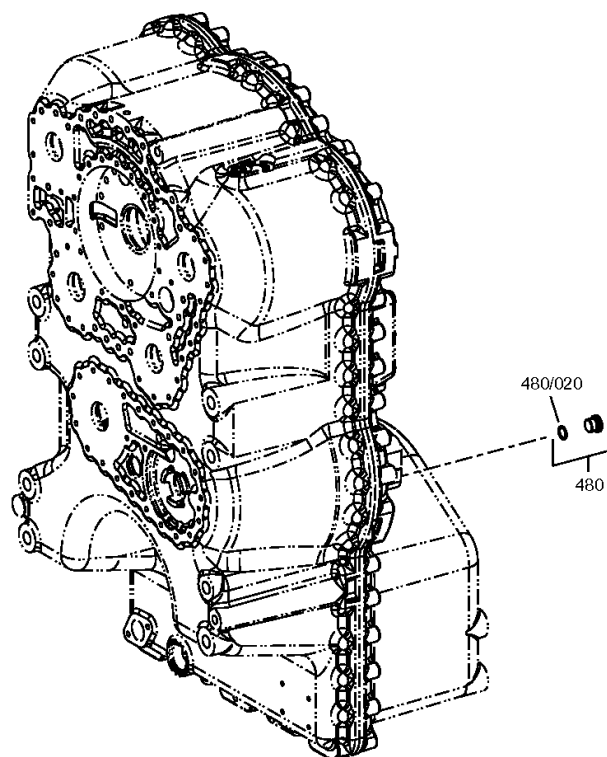
Material number: 4657.055.131

Plant: 465710700300

Material-assembly-group-no: 4657.107.003



5 WG 210 /
SPEEDOMETER



Parts list

Page 1 from 1



5 WG 210 /

Material number: 4657.055.131

Plant: 465710700300

Material-assembly-group-no: 4657.107.003

Pos.	Material number	Customer material	Name	Quantity	ME	Amend. no.	Techn. Info.	Rep kit	Alternative material
480	4475.280.011		SCREW PLUG	1			M18X1,5 KPL.MIT O-RING		
/20	0634.306.524		O-RING	1			15X2		

Plant

Page 1 from 1

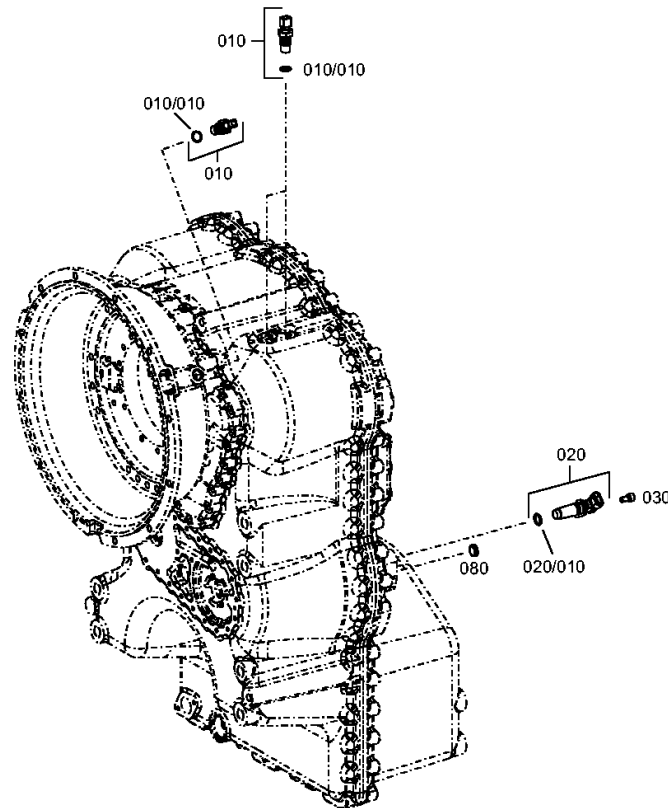
Material number: 4657.055.131

Plant: 465712500200

Material-assembly-group-no: 4657.125.002



5 WG 210 /
INDUCTIVE SENSOR



Parts list

Page 1 from 1



5 WG 210 /

Material number: 4657.055.131

Plant: 465712500200

Material-assembly-group-no: 4657.125.002

Pos.	Material number	Customer material	Name	Quantity	ME	Amend. no.	Techn. Info.	Rep kit	Alternative material
10	0501.209.719		INDUCTIVE SENSOR	3		K00250/97110			
/10	0734.313.125		O-RING	1					
20	0501.317.949		SPEED SENSOR	1		K02042/9910	ENTHALT.IN 0501 317 941(2)		
/10	0634.313.728		O-RING	1			15,54X2,62		
30	0636.115.293		CAP SCREW	1			M8X16		
80	0501.318.288		SEALING CAP	1					

Plant

Page 1 from 1

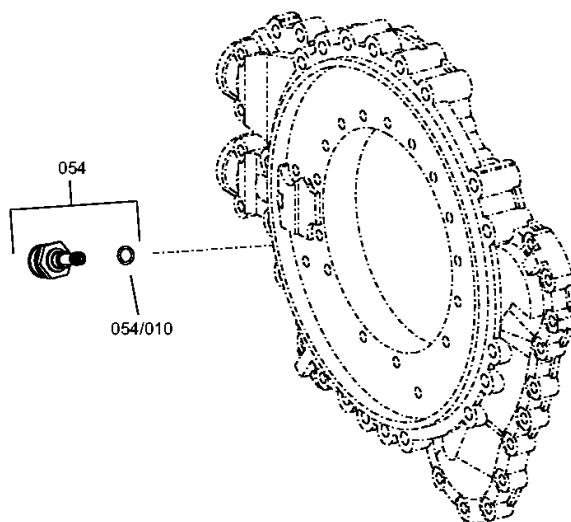
Material number: 4657.055.131

Plant: 465712400300

Material-assembly-group-no: 4657.124.003



5 WG 210 /
TEMPERATURE SENSOR



Parts list

Page 1 from 1



5 WG 210 /

Material number: 4657.055.131

Plant: 465712400300

Material-assembly-group-no: 4657.124.003

Pos.	Material number	Customer material	Name	Quantity	ME	Amend. no.	Techn. Info.	Rep kit	Alternative material
54	0501.322.534		TEMPERATURE SENSOR	1		K00546/0610			
/10	0634.313.366		O-RING	1			11X2		

Plant

Page 1 from 1

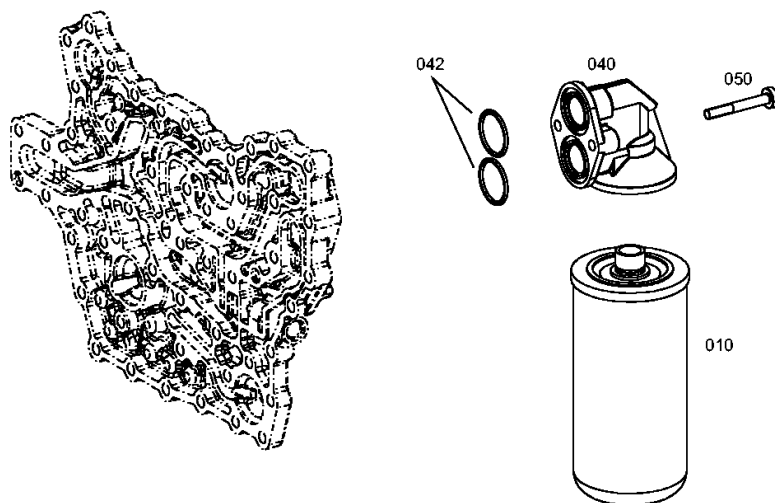
Material number: 4657.055.131

Plant: 465613801500

Material-assembly-group-no: 4656.138.015



5 WG 210 /
FILTER



Parts list

Page 1 from 1



5 WG 210 /

Material number: 4657.055.131

Plant: 465613801500

Material-assembly-group-no: 4656.138.015

Pos.	Material number	Customer material	Name	Quantity	ME	Amend. no.	Techn. Info.	Rep kit	Alternative material
10	0501.333.764		PRESSURE FILTER	1					
40	0501.210.925		FILTER HEAD	1			KPL.		
42	0634.306.053		O-RING	2		K01160/0610	34,2X3		
50	0736.300.183		TORX SCREW	2			M8X60		

Plant

Page 1 from 1

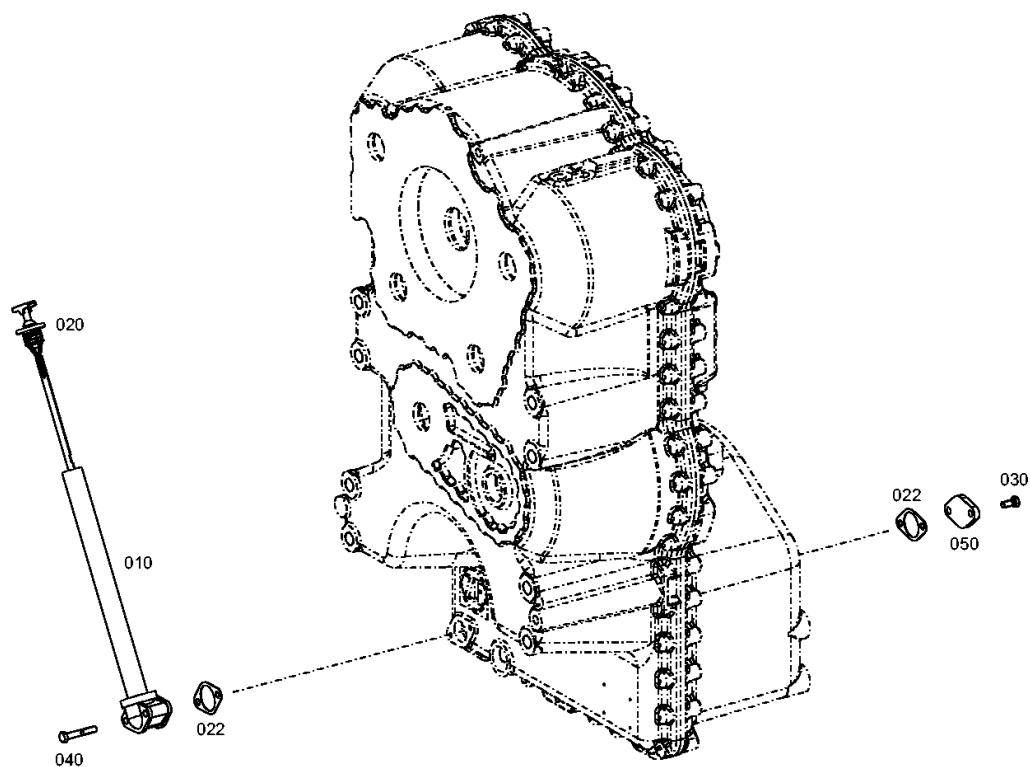
Material number: 4657.055.131

Plant: 465713100400

Material-assembly-group-no: 4657.131.004



5 WG 210 /
FILLER NOZZLE



Parts list

Page 1 from 1



5 WG 210 /

Material number: 4657.055.131

Plant: 465713100400

Material-assembly-group-no: 4657.131.004

Pos.	Material number	Customer material	Name	Quantity	ME	Amend. no.	Techn. Info.	Rep kit	Alternative material
10	4642.231.127		OIL LEVEL TUBE	1					
20	4657.231.003		OIL DIPSTICK	1					
22	4642.331.216		GASKET	1					
30	0636.015.681		HEXAGON SCREW	2			M8X18		
40	0636.100.722		HEXAGON SCREW	2			M8X50		
45	4642.331.216		GASKET	1					
50	4644.301.014		COVER PLATE	1			E=8		

Plant

Page 1 from 1

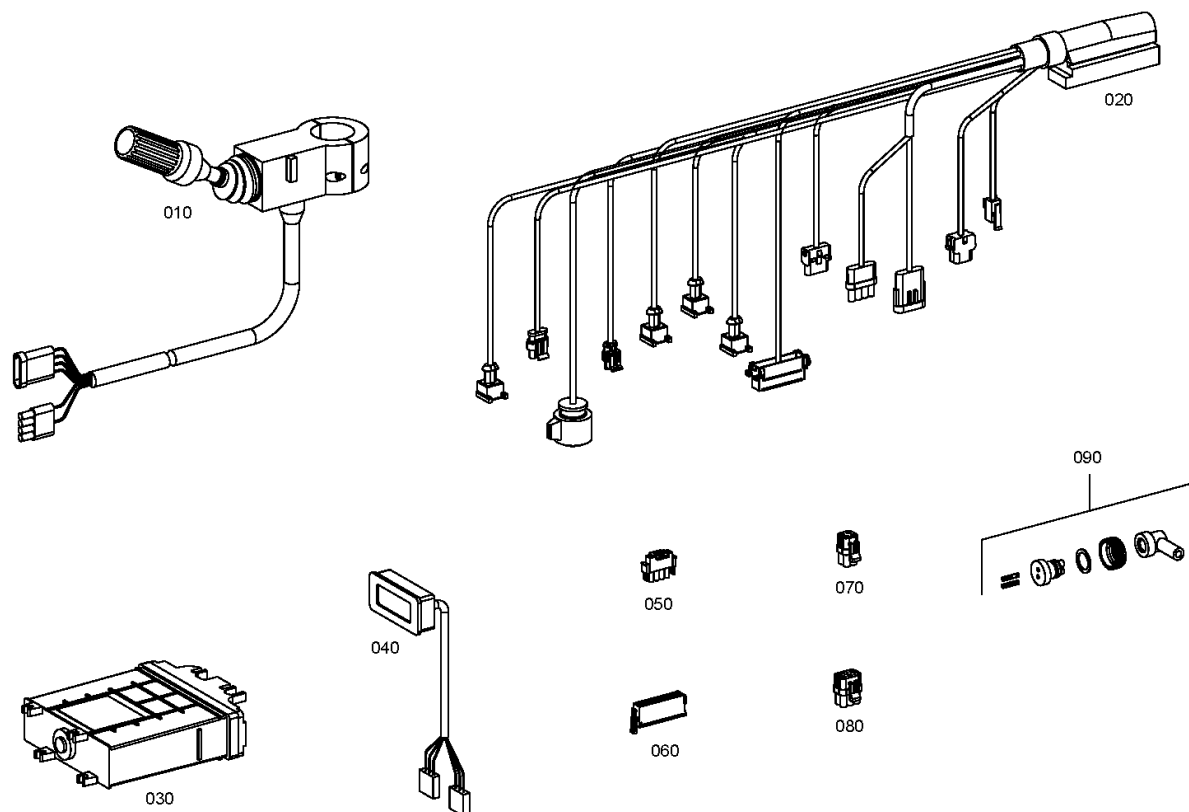
Material number: 4657.055.131

Plant: 465718331900

Material-assembly-group-no: 4657.183.319



5 WG 210 /
LOOSE PARTS



Parts list

Page 1 from 1



5 WG 210 /

Material number: 4657.055.131

Plant: 465718331900

Material-assembly-group-no: 4657.183.319

Pos.	Material number	Customer material	Name	Quantity	ME	Amend. no.	Techn. Info.	Rep kit	Alternative material
10	0501.216.209		RANGE SELECTOR	1			KPL.		
20	6029.017.060		CABLE OFF-ROAD	1			EST37 OFFENE STECKER LANG		
30	6057.018.720		EST 37 A	1					
/30	6057.318.720		EPROM MEMORY	1					
40	6007.203.236		DISPLAY	1			KPL.2 X 4POL.MATE-N-LOK		
50	6029.199.008		PLUG KIT	1			STECKER 4POL M-N-L BU		
60	6029.199.043		PLUG KIT	1			STECKER 22POL BU JUN.P.T.		
70	6029.199.075		PLUG KIT	1			STECKER 4POL JPT ST		
80	6029.199.031		PLUG KIT	1			STECKER 6POL M-M-L BU		
90	6029.199.003		PLUG KIT	1			STECKER 2POL M27		