



# Spare Parts Catalog

MS-B 3025

Material number: 4475.004.095

Current date: 06.03.2017

ZF Friedrichshafen AG  
Hauptverwaltung  
80038 Friedrichshafen  
Deutschland

Telefon: +49 7541 77-0

Telefax: +49 7541 77-908000

[www.zf.com](http://www.zf.com)

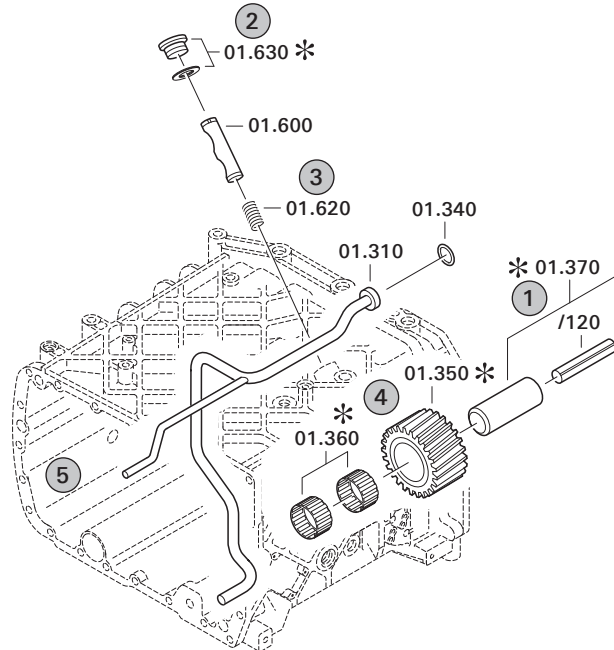
zuständiges Werk:  
Passau

# Notes relating to the spare parts catalog

## Setup of the spare parts catalog

- Cover sheet
- Technical Cover (only in SDM print)
- Overview of figures
- Figure
- Associated parts list
- Next figure
- Associated parts list
- ...

## Figure and parts list



## Overview of figures

| Bildtafel<br>Figure | Sachnummer<br>Product number | Benennung<br>(Description) | Technische Info<br>Technical info | Description<br>(Benennung) | Menge<br>Quantity | Einheit<br>Unit |
|---------------------|------------------------------|----------------------------|-----------------------------------|----------------------------|-------------------|-----------------|
| 068.08.17           | 1316.170.001                 | AUSLEGER                   | WL                                | SHIFT TURRET               | 1                 | Stk             |
| 068.08.06           | 1316.170.031                 | DECKEL                     | WL*H-H*VM                         | COVER                      | 1                 | Stk             |
| 068.08.14           | 1316.170.808                 | DECKEL                     | WL*AUSL+GEH*H-H*HF160N            | COVER                      | 1                 | Stk             |
| 08                  | 1316.170.441                 | ANSCHLUSSTEILE             | WL*NG-VORB*RG-SCHL*168N*BAJONETT  | CONNECTING PARTS           | 1                 | Stk             |

The "gap" indicates that there is no separate graphics panel (poster) for this assembly  
The parts of this assembly are shown with the same mid-section number on the figure

### 1 Positions and subpositions

| Pos.  | Sachnummer<br>Product number | Benennung<br>(Description) | Technische Info<br>Technical info | Description<br>(Benennung) | Menge<br>Quantity | Einheit<br>Unit |
|-------|------------------------------|----------------------------|-----------------------------------|----------------------------|-------------------|-----------------|
| 0370  | 1315.201.054                 | RUECKLAUFBOLZEN            | KPL.16S151*SG*L= 79               | REV.IDLER SHAFT            | 1                 | Stk             |
| /0120 | 0631.329.293                 | SPANNSTIFT                 |                                   | SLOT. PIN                  | 1                 | Stk             |

Positions marked with "/" are the individual items of a completion  
For example: Position 0370 contains a centering pin with the position /0120

### 2 Combinations with standardized parts

| Pos. | Sachnummer<br>Product number | Benennung<br>(Description) | Technische Info<br>Technical info | Description<br>(Benennung) | Menge<br>Quantity | Einheit<br>Unit |
|------|------------------------------|----------------------------|-----------------------------------|----------------------------|-------------------|-----------------|
| 0630 |                              | VERSCHL.SCHR.              |                                   | SCREW PLUG                 | 1                 | Stk             |
|      | 0636.302.067                 | VERSCHL.SCHR.              |                                   | SCREW PLUG                 | 1                 | Stk             |
|      | 0634.801.249                 | DICHTRING                  | A 26 X 31                         | SEALING RING               | 1                 | Stk             |

The parts list shows the components included in the combination of standardized parts

### 3 Depiction of position/item number on the figure and in the parts list

01.620 - on the figure 01 relates to the assembly in which the position is included. Due to program-related reasons, it is shown on the figure.

0620 - in the parts list

| Pos. | Sachnummer<br>Product number | Benennung<br>(Description) | Technische Info<br>Technical info | Description<br>(Benennung) | Menge<br>Quantity | Einheit<br>Unit |
|------|------------------------------|----------------------------|-----------------------------------|----------------------------|-------------------|-----------------|
| 0620 | 0732.040.736                 | DRUCKFEDER                 |                                   | COMPRESSION SPRING         | 1                 | Stk             |

### 4 \*-Positions

Positions marked with an \* are optional i.e. inclusion in the parts list is not mandatory.  
The following note is shown on the figure

je nach Stücklistenausführung  
depending on spec. number  
\*  
suivant la nomenclature  
secondo la distinta base

### 5 Parts, dotted display

Parts with dotted display on the figure are only used for orientation of other parts



| Pos. | Information                                  | Amendment number |
|------|--|------------------|
|      | PRODUCT DESCRIPTION: ZF- MULTISTEER- AXLE    |                  |
|      | VEHICLE TYPE: BACKHOE LOADER                 |                  |
|      | AXLE TYPE: MS-B 3025                         |                  |
|      | VERSION: STEERABLE                           |                  |
|      | AXLE ARRANGEMENT: FRONT AXLE                 |                  |
|      | DIRECTION OF ROTATION: CW                    |                  |
|      | CROWN WHEEL POSITION: LEFT                   |                  |
|      | SPIRAL DIRECTION: RIGHT                      |                  |
|      | INPUT FLANGE: DS 1350                        |                  |
|      | FLANGE TO FLANGE DIM.: 1.776 MM              |                  |
|      | AXLE INSTALLATION: ABOVE CENTER PIVOT        |                  |
|      | MOUNTING DIMENSIONS: 120X314/D=45,09         |                  |
|      | MAIN DIFFERENTIAL: LIMITED-SLIP DIFFERENTIAL |                  |
|      | LOCKING RATIO: 45%                           |                  |
|      | AXLE RATIO: 14,760                           |                  |
|      | STEERING CYLINDER SIZE: 65 X 40              |                  |
|      | STEER. ANGLE SENSOR: WITHOUT                 |                  |
|      | STEERING VERSION: STANDARD (HIGH PRESURE)    |                  |
|      | MAX STEERING ANGLE: 52 GRAD                  |                  |
|      | PORT SIZE: 9/16 - 18 UNF 2B                  |                  |
|      | PLANETARY DRIVE: P3, I=7,125                 |                  |
|      | BRAKE : WITHOUT                              |                  |
|      | RIM PITCH CIRCLE DIAM.: 275,00 MM            |                  |
|      | WHEEL CONNECTION: BOLT 8 X M22 X 1,5 X 47    |                  |
|      | WHEEL NUTS: WITHOUT                          |                  |
|      | OIL FILLING AXLE DRIVE: WITH                 |                  |
|      | OIL - GRADE AXLE DRIVE: TE ML 05             |                  |
|      | PRIMER PAINT: YELLOW RAL 1006                |                  |
|      | PAINT-FREE AREA: STANDARD BACKHOE LOADER     |                  |
|      | TYPE PLATE: ZF- STANDARD                     |                  |
|      | PLANETARY DRIVE OIL CAP 0,80 L               |                  |
|      | AXLE HOUSING OIL CAPACI 6,30 L               |                  |
|      | OIL FILL QUANTITY CA: 7,90 L                 |                  |



| Pos. | Information                        | Amendment number |
|------|------------------------------------|------------------|
|      | DOCUMENTATION: -----               |                  |
|      | SECTION DRAWING: 4475 004 091      |                  |
|      | INSTALLATION DRAWING: 4475 604 045 |                  |
|      | INSTALL. INSTRUCTION: 4475 700 081 |                  |
|      | TESTING INSTRUCTION: 4475 760 028  |                  |

# Assembly group overview

Page 1 from 1

Material number: 4475.004.095



MS-B 3025 /

| Graphics     | Pos. | Material number | Name             | Quantity | Amend. no. | Techn. Info. |
|--------------|------|-----------------|------------------|----------|------------|--------------|
| 447510220400 | 10   | 4475.102.204    | INPUT            | 1        |            |              |
| 447510245900 | 20   | 4475.102.459    | INPUT            | 1        |            |              |
| 448202100600 | 30   | 4482.021.006    | DIFFERENTIAL 250 | 1        |            |              |
| 447510120700 | 70   | 4475.101.207    | AXLE CASING      | 1        |            |              |
| 447510160700 | 80   | 4475.101.607    | AXLE CASING      | 1        |            |              |
| 447510316100 | 90   | 4475.103.161    | JOINT HOUSING    | 1        |            |              |
| 447510346700 | 100  | 4475.103.467    | JOINT HOUSING    | 1        |            |              |
| 447510409700 | 110  | 4475.104.097    | PLANETARY DRIVE  | 1        |            |              |
| 447510508500 | 120  | 4475.105.085    | STEERING         | 1        |            |              |

# Plant

Page 1 from 1

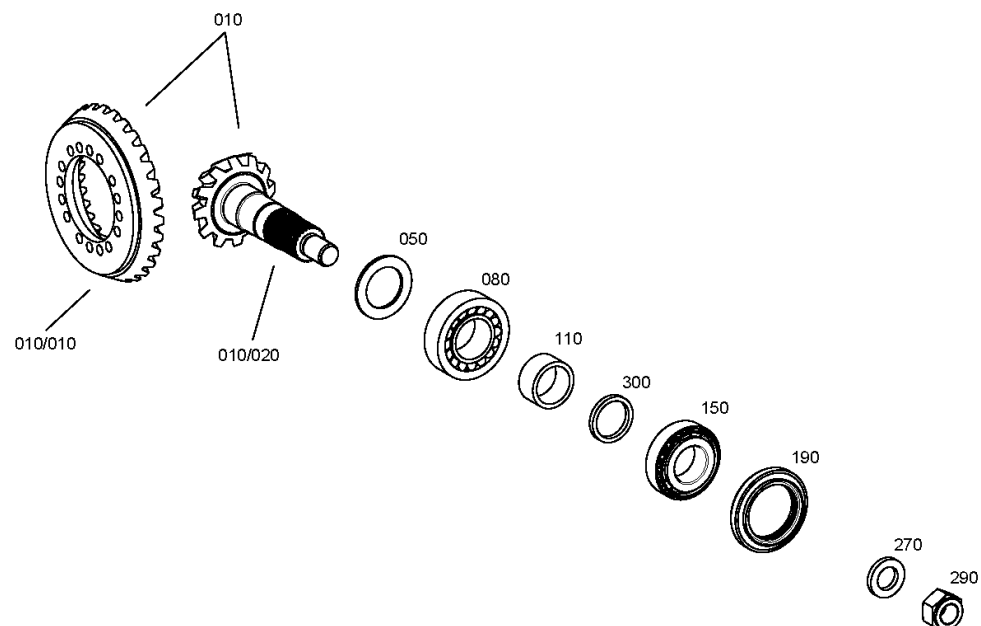
Material number: 4475.004.095

Plant: 447510220400

Material-assembly-group-no: 4475.102.204



MS-B 3025 /  
INPUT



# Parts list

Page 1 from 2



MS-B 3025 /

Material number: 4475.004.095

Plant: 447510220400

Material-assembly-group-no: 4475.102.204

| Pos. | Material number | Customer material | Name                   | Quantity | ME | Amend. no.  | Techn. Info.                | Rep kit | Alternative material |
|------|-----------------|-------------------|------------------------|----------|----|-------------|-----------------------------|---------|----------------------|
| 10   | 4475.205.092    |                   | BEVEL GEAR SET         | 1        |    |             | M-l=2,071/RE/FLSP=0,15-0,27 |         |                      |
| 50   | ---             |                   | ADJUSTMENT PLATE       | 1        |    |             |                             |         |                      |
| ---  | 0730.113.657    |                   | WASHER                 | 1        |    |             | A=3,3                       |         |                      |
| ---  | 0730.113.658    |                   | WASHER                 | 1        |    |             | A=3,4                       |         |                      |
| ---  | 0730.113.659    |                   | WASHER                 | 1        |    |             | A=3,5                       |         |                      |
| ---  | 0730.113.660    |                   | WASHER                 | 1        |    |             | A=3,6                       |         |                      |
| ---  | 0730.113.661    |                   | WASHER                 | 1        |    |             | A=3,7                       |         |                      |
| 80   | 0750.117.354    |                   | TAPER ROLLER BEARING   | 1        |    |             | 44,450X88,900X30,162        |         |                      |
| 110  | 0730.300.675    |                   | BUSH                   | 1        |    |             | A=25,80                     |         |                      |
| 150  | 0750.117.618    |                   | TAPERED ROLLER BEARING | 1        |    |             | 40,000X80,000X24,750        |         |                      |
| 190  | 0734.319.709    |                   | SHAFT SEAL             | 1        |    |             | 60,0X90,0X10,0/14,5         |         |                      |
| 270  | 0730.113.665    |                   | WASHER                 | 1        |    | K04989/0710 | S=6,0                       |         |                      |
| 290  | 0637.011.044    |                   | HEXAGON NUT            | 1        |    |             | M24X2                       |         |                      |
| 300  | ---             |                   | RING                   | 1        |    |             |                             |         |                      |
| ---  | 0730.162.820    |                   | RING                   | 1        |    |             | A=5,55                      |         |                      |
| ---  | 0730.162.821    |                   | RING                   | 1        |    |             | A=5,60                      |         |                      |
| ---  | 0730.162.822    |                   | RING                   | 1        |    |             | A=5,65                      |         |                      |
| ---  | 0730.162.823    |                   | RING                   | 1        |    |             | A=5,70                      |         |                      |
| ---  | 0730.162.824    |                   | RING                   | 1        |    |             | A=5,75                      |         |                      |
| ---  | 0730.162.825    |                   | RING                   | 1        |    |             | A=5,80                      |         |                      |
| ---  | 0730.162.826    |                   | RING                   | 1        |    |             | A=5,85                      |         |                      |
| ---  | 0730.162.827    |                   | RING                   | 1        |    |             | A=5,90                      |         |                      |
| ---  | 0730.162.828    |                   | RING                   | 1        |    |             | A=5,95                      |         |                      |
| ---  | 0730.162.829    |                   | RING                   | 1        |    |             | A=6,10                      |         |                      |
| ---  | 0730.162.830    |                   | RING                   | 1        |    |             | A=6,15                      |         |                      |
| ---  | 0730.162.834    |                   | RING                   | 1        |    |             | A=6,20                      |         |                      |
| ---  | 0730.162.835    |                   | RING                   | 1        |    |             | A=6,25                      |         |                      |
| ---  | 0730.162.836    |                   | RING                   | 1        |    |             | A=6,30                      |         |                      |
| ---  | 0730.162.837    |                   | RING                   | 1        |    |             | A=6,35                      |         |                      |
| ---  | 0730.162.838    |                   | RING                   | 1        |    |             | A=6,40                      |         |                      |
| ---  | 0730.162.839    |                   | RING                   | 1        |    |             | A=6,45                      |         |                      |
| ---  | 0730.162.840    |                   | RING                   | 1        |    |             | A=6,50                      |         |                      |
| ---  | 0730.162.841    |                   | RING                   | 1        |    |             | A=6,55                      |         |                      |
| ---  | 0730.162.842    |                   | RING                   | 1        |    |             | A=6,60                      |         |                      |

# Parts list

Page 2 from 2



MS-B 3025 /

Material number: 4475.004.095

Plant: 447510220400

Material-assembly-group-no: 4475.102.204

| Pos. | Material number | Customer material | Name | Quantity | ME | Amend. no. | Techn. Info. | Rep kit | Alternative material |
|------|-----------------|-------------------|------|----------|----|------------|--------------|---------|----------------------|
| ---  | 0730.162.843    |                   | RING | 1        |    |            | A=6,65       |         |                      |
| ---  | 0730.162.844    |                   | RING | 1        |    |            | A=6,70       |         |                      |
| ---  | 0730.113.543    |                   | RING | 1        |    |            | A=5,98       |         |                      |
| ---  | 0730.113.544    |                   | RING | 1        |    |            | A=6,00       |         |                      |
| ---  | 0730.113.545    |                   | RING | 1        |    |            | A=6,02       |         |                      |
| ---  | 0730.113.546    |                   | RING | 1        |    |            | A=6,04       |         |                      |
| ---  | 0730.113.547    |                   | RING | 1        |    |            | A=6,07       |         |                      |
| ---  | 0730.113.809    |                   | RING | 1        |    |            | A=5,88       |         |                      |
| ---  | 0730.113.810    |                   | RING | 1        |    |            | A=5,92       |         |                      |
| ---  | 0730.113.811    |                   | RING | 1        |    |            | A=6,12       |         |                      |
| ---  | 0730.113.812    |                   | RING | 1        |    |            | A=6,18       |         |                      |
| ---  | 0730.113.813    |                   | RING | 1        |    |            | A=6,22       |         |                      |

# Plant

Page 1 from 1

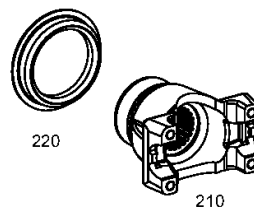
Material number: 4475.004.095

Plant: 447510245900

Material-assembly-group-no: 4475.102.459



MS-B 3025 /  
INPUT



# Parts list

Page 1 from 1



MS-B 3025 /

Material number: 4475.004.095

Plant: 447510245900

Material-assembly-group-no: 4475.102.459

| Pos. | Material number | Customer material | Name         | Quantity | ME | Amend. no.   | Techn. Info.         | Rep kit | Alternative material |
|------|-----------------|-------------------|--------------|----------|----|--------------|----------------------|---------|----------------------|
| 210  | 4475.305.656    |                   | END YOKE     | 1        |    | Z00034765510 | DS1350*N38x1,25*Z=29 |         |                      |
| 220  | 4475.305.550    |                   | SCREEN SHEET | 1        |    |              |                      |         |                      |

# Plant

Page 1 from 1

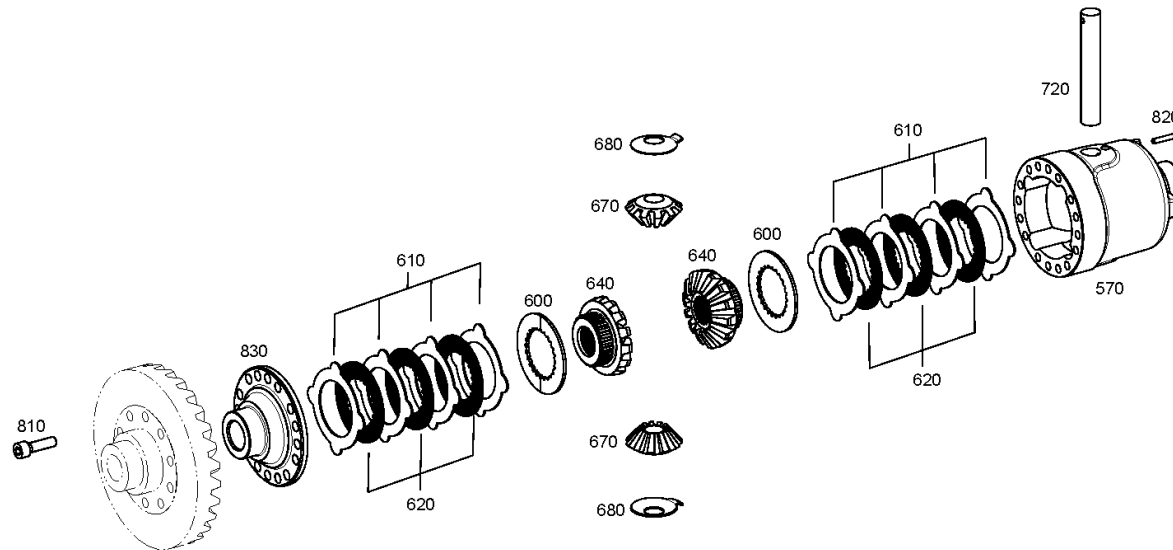
Material number: 4475.004.095

Plant: 448202100600

Material-assembly-group-no: 4482.021.006



MS-B 3025 /  
DIFFERENTIAL 250



# Parts list

Page 1 from 1



MS-B 3025 /

Material number: 4475.004.095

Plant: 448202100600

Material-assembly-group-no: 4482.021.006

| Pos. | Material number | Customer material | Name                    | Quantity | ME | Amend. no. | Techn. Info. | Rep kit | Alternative material |
|------|-----------------|-------------------|-------------------------|----------|----|------------|--------------|---------|----------------------|
| 570  | 4482.320.001    |                   | DIFF.CASE               | 1        |    |            | D-TEIL       |         |                      |
| 600  | 0501.331.201    |                   | END DISC                | 2        |    |            | Z=26         |         |                      |
| 610  | ---             |                   | OUTER CLUTCH DISK       | 8        |    |            |              |         |                      |
| ---  | 4481.345.081    |                   | OUTER CLUTCH DISK       | 1        |    |            |              |         |                      |
| ---  | 4481.345.082    |                   | OUTER CLUTCH DISK       | 1        |    |            |              |         |                      |
| 620  | 0501.330.529    |                   | INNER CLUTCH DISK       | 6        |    |            | h=2,100      |         |                      |
| 640  | 0501.327.157    |                   | AXLE BEVEL GEAR         | 2        |    |            | Z=14         |         |                      |
| 670  | 0501.328.048    |                   | DIFFERENTIAL BEVEL GEAR | 2        |    |            | Z=10         |         |                      |
| 680  | 4481.345.070    |                   | THRUST WASHER           | 2        |    |            | D-TEIL       |         |                      |
| 720  | 4481.345.071    |                   | DIFF.AXLE               | 1        |    |            |              |         |                      |
| 810  | 0636.101.052    |                   | CAP SCREW               | 16       |    |            | M10X35       |         |                      |
| 820  | 0631.329.057    |                   | SLOTTED PIN             | 1        |    |            | 5X40         |         |                      |
| 830  | 4475.305.568    |                   | COVER                   | 1        |    |            | D-TEIL       |         |                      |

# Plant

Page 1 from 1

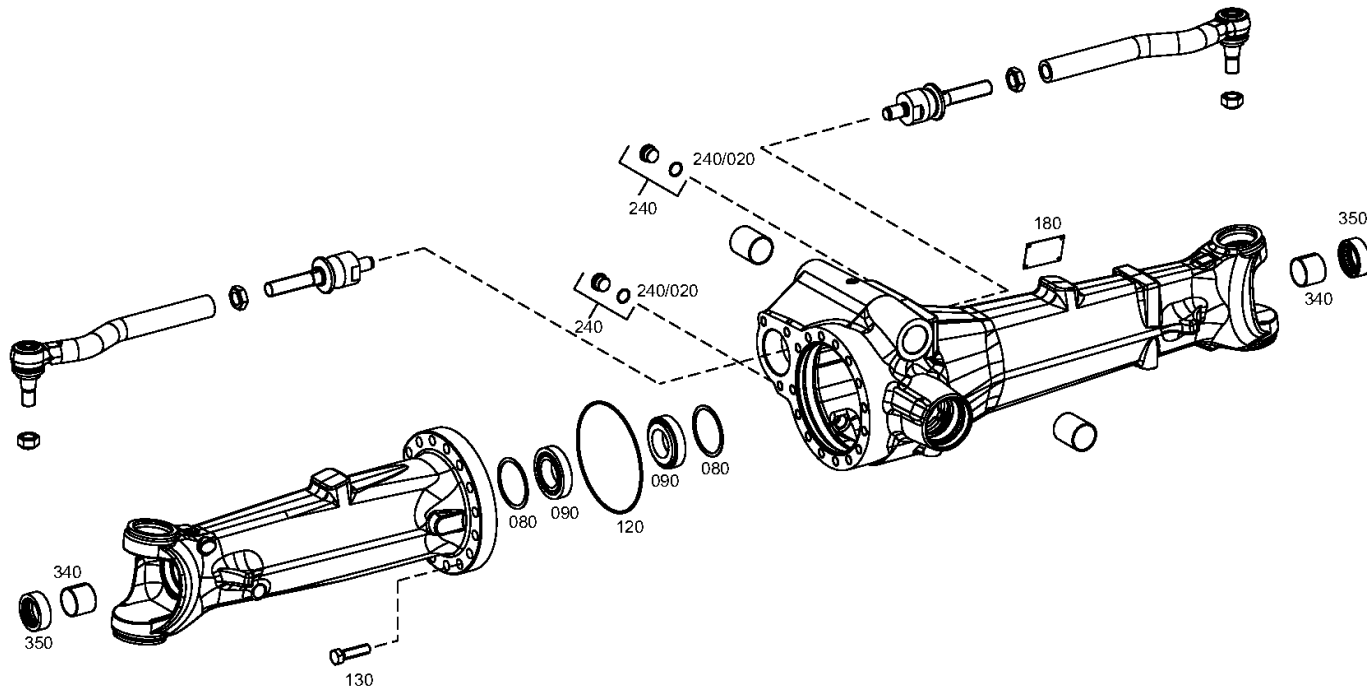
Material number: 4475.004.095

Plant: 447510120700

Material-assembly-group-no: 4475.101.207



MS-B 3025 /  
AXLE CASING



# Parts list

Page 1 from 2



MS-B 3025 /

Material number: 4475.004.095

Plant: 447510120700

Material-assembly-group-no: 4475.101.207

| Pos. | Material number | Customer material | Name | Quantity | ME | Amend. no. | Techn. Info.              | Rep kit | Alternative material |
|------|-----------------|-------------------|------|----------|----|------------|---------------------------|---------|----------------------|
| 80   | ---             |                   | SHIM | 2        |    |            |                           |         |                      |
| ---  | 0730.001.009    |                   | SHIM | 1        |    |            | A=2,00 IN 0730 005 413(2) |         |                      |
| ---  | 0730.008.154    |                   | SHIM | 1        |    |            | A=1,95 IN 0730 005 413(2) |         |                      |
| ---  | 0730.008.053    |                   | SHIM | 1        |    |            | A=1,90 IN 0730 005 413(2) |         |                      |
| ---  | 0730.005.817    |                   | SHIM | 1        |    |            | A=1,85 IN 0730 005 413(2) |         |                      |
| ---  | 0730.008.052    |                   | SHIM | 1        |    |            | A=1,80 IN 0730 005 413(2) |         |                      |
| ---  | 0730.005.816    |                   | SHIM | 1        |    |            | A=1,75 IN 0730 005 413(2) |         |                      |
| ---  | 0730.008.051    |                   | SHIM | 1        |    |            | A=1,70 IN 0730 005 413(2) |         |                      |
| ---  | 0730.006.529    |                   | SHIM | 1        |    |            | A=1,65                    |         |                      |
| ---  | 0730.006.528    |                   | SHIM | 1        |    |            | A=1,60                    |         |                      |
| ---  | 0730.006.527    |                   | SHIM | 1        |    |            | A=1,55                    |         |                      |
| ---  | 0730.006.526    |                   | SHIM | 1        |    |            | A=1,50                    |         |                      |
| ---  | 0730.006.525    |                   | SHIM | 1        |    |            | A=1,45                    |         |                      |
| ---  | 0730.001.010    |                   | SHIM | 1        |    |            | A=1,40 IN 0730 005 413(2) |         |                      |
| ---  | 0730.002.277    |                   | SHIM | 1        |    |            | A=1,20 IN 0730 005 413(2) |         |                      |
| ---  | 0730.000.123    |                   | SHIM | 1        |    |            | A=1,00 IN 0730 005 413(2) |         |                      |
| ---  | 0730.000.124    |                   | SHIM | 1        |    |            | A=0,80 IN 0730 005 413(2) |         |                      |
| ---  | 0730.001.011    |                   | SHIM | 1        |    |            | 78X89,8X0,6               |         |                      |
| ---  | 0730.000.125    |                   | SHIM | 1        |    |            | A=0,50 IN 0730 005 413(2) |         |                      |
| ---  | 0730.001.012    |                   | SHIM | 1        |    |            | 78X89,8X0,4               |         |                      |
| ---  | 0730.002.280    |                   | SHIM | 1        |    |            | A=0,30 IN 0730 005 413(2) |         |                      |
| ---  | 0730.000.126    |                   | SHIM | 1        |    |            | A=0,20 IN 0730 005 413(2) |         |                      |
| ---  | 0730.000.127    |                   | SHIM | 1        |    |            | A=0,10 IN 0730 005 413(2) |         |                      |
| ---  | 0730.006.513    |                   | SHIM | 1        |    |            | A=0,65                    |         |                      |
| ---  | 0730.006.514    |                   | SHIM | 1        |    |            | A=0,70                    |         |                      |
| ---  | 0730.006.515    |                   | SHIM | 1        |    |            | A=0,75                    |         |                      |
| ---  | 0730.006.516    |                   | SHIM | 1        |    |            | A=0,85                    |         |                      |
| ---  | 0730.006.517    |                   | SHIM | 1        |    |            | A=0,90                    |         |                      |
| ---  | 0730.006.518    |                   | SHIM | 1        |    |            | A=0,95                    |         |                      |
| ---  | 0730.006.520    |                   | SHIM | 1        |    |            | A=1,10                    |         |                      |
| ---  | 0730.006.521    |                   | SHIM | 1        |    |            | A=1,15                    |         |                      |
| ---  | 0730.006.522    |                   | SHIM | 1        |    |            | A=1,25                    |         |                      |
| ---  | 0730.006.523    |                   | SHIM | 1        |    |            | A=1,30                    |         |                      |
| ---  | 0730.006.524    |                   | SHIM | 1        |    |            | A=1,35                    |         |                      |

# Parts list

Page 2 from 2



MS-B 3025 /

Material number: 4475.004.095

Plant: 447510120700

Material-assembly-group-no: 4475.101.207

| Pos. | Material number | Customer material | Name                   | Quantity | ME | Amend. no.   | Techn. Info.              | Rep kit | Alternative material |
|------|-----------------|-------------------|------------------------|----------|----|--------------|---------------------------|---------|----------------------|
| ---  | 0730.005.708    |                   | SHIM                   | 1        |    |              | A=0,45                    |         |                      |
| ---  | 0730.005.709    |                   | SHIM                   | 1        |    |              | A=0,55                    |         |                      |
| ---  | 0730.006.519    |                   | SHIM                   | 1        |    |              | A=1,05                    |         |                      |
| ---  | 0730.007.783    |                   | SHIM                   | 1        |    |              | A=2,05 IN 0730 005 413(2) |         |                      |
| ---  | 0730.007.784    |                   | SHIM                   | 1        |    |              | A=2,10 IN 0730 005 413(2) |         |                      |
| ---  | 0730.007.785    |                   | SHIM                   | 1        |    |              | A=2,15 IN 0730 005 413(2) |         |                      |
| ---  | 0730.007.786    |                   | SHIM                   | 1        |    |              | A=2,20 IN 0730 005 413(2) |         |                      |
| ---  | 0730.007.787    |                   | SHIM                   | 1        |    |              | A=2,25 IN 0730 005 413(2) |         |                      |
| ---  | 0730.008.292    |                   | SHIM                   | 1        |    |              | A=2,30 IN 0730 005 413(2) |         |                      |
| ---  | 0730.008.293    |                   | SHIM                   | 1        |    |              | A=2,35 IN 0730 005 413(2) |         |                      |
| ---  | 0730.008.294    |                   | SHIM                   | 1        |    |              | A=2,40 IN 0730 005 413(2) |         |                      |
| ---  | 0730.008.295    |                   | SHIM                   | 1        |    |              | A=2,45 IN 0730 005 413(2) |         |                      |
| ---  | 0730.008.296    |                   | SHIM                   | 1        |    |              | A=2,50 IN 0730 005 413(2) |         |                      |
| 90   | 0750.117.802    |                   | TAPERED ROLLER BEARING | 2        |    |              | 50,000X90,000X21,750      |         |                      |
| 120  | 0634.100.545    |                   | O-RING                 | 1        |    | Z00022405710 | 186X3,5                   |         |                      |
| 130  | 0636.011.204    |                   | HEXAGON SCREW          | 15       |    |              | M16X60                    |         |                      |
| 180  | 0730.365.292    |                   | TYPE PLATE             | 1        |    |              | ZF-Standard/Stankov       |         |                      |
| 240  | 4475.280.099    |                   | SCREW PLUG             | 2        |    |              |                           |         |                      |
| /20  | 0634.303.266    |                   | O-RING                 | 1        |    |              | 21X2                      |         |                      |
| 340  | 0501.316.250    |                   | BUSH                   | 2        |    | K01188/0510  |                           |         |                      |
| 350  | 0734.300.610    |                   | SHAFT SEAL             | 2        |    | Z00029534310 | 46,0X65,0X21,0            |         |                      |

## Page 1 from 1

Plant: 447510160700



This exploded view diagram illustrates the assembly of a mechanical system. The main components are labeled 420 and 550. Component 420 is shown on the left, featuring a long shaft with a flange at one end and a mounting bracket at the other. It is associated with parts 420/010, 420/020, 420/030, and 420/040. Component 550 is shown on the right, featuring a similar shaft and mounting bracket, associated with parts 550/010, 550/020, 550/030, and 550/040. The diagram also shows various fasteners and seals: bolts (020, 010), washers (470), and seals (020, 010, 470) used in the assembly.

# Parts list

Page 1 from 1



MS-B 3025 /

Material number: 4475.004.095

Plant: 447510160700

Material-assembly-group-no: 4475.101.607

| Pos. | Material number | Customer material | Name        | Quantity | ME | Amend. no.   | Techn. Info. | Rep kit | Alternative material |
|------|-----------------|-------------------|-------------|----------|----|--------------|--------------|---------|----------------------|
| 10   | 4475.304.194    |                   | AXLE CASING | 1        |    |              |              |         |                      |
| 20   | 4475.304.195    |                   | AXLE CASING | 1        |    |              | D-TEIL       |         |                      |
| 420  | 0501.008.219    |                   | TIE ROD     | 1        |    | Z00031222810 |              |         |                      |
| /10  | 0501.215.135    |                   | BALL JOINT  | 1        |    |              |              |         |                      |
| /20  | 0501.213.503    |                   | AXIAL JOINT | 1        |    |              |              |         |                      |
| /30  | 0637.011.061    |                   | HEXAGON NUT | 1        |    |              | M22X1,5      |         |                      |
| /40  | 0501.320.734    |                   | HEXAGON NUT | 1        |    |              |              |         |                      |
| 470  | 0501.315.014    |                   | BUSH        | 2        |    |              |              |         |                      |
| 550  | 0501.008.220    |                   | TIE ROD     | 1        |    | Z00031222810 |              |         |                      |
| /10  | 0501.215.134    |                   | BALL JOINT  | 1        |    |              |              |         |                      |
| /20  | 0501.213.503    |                   | AXIAL JOINT | 1        |    |              |              |         |                      |
| /30  | 0637.011.061    |                   | HEXAGON NUT | 1        |    |              | M22X1,5      |         |                      |
| /40  | 0501.320.734    |                   | HEXAGON NUT | 1        |    |              |              |         |                      |

# Plant

Page 1 from 1

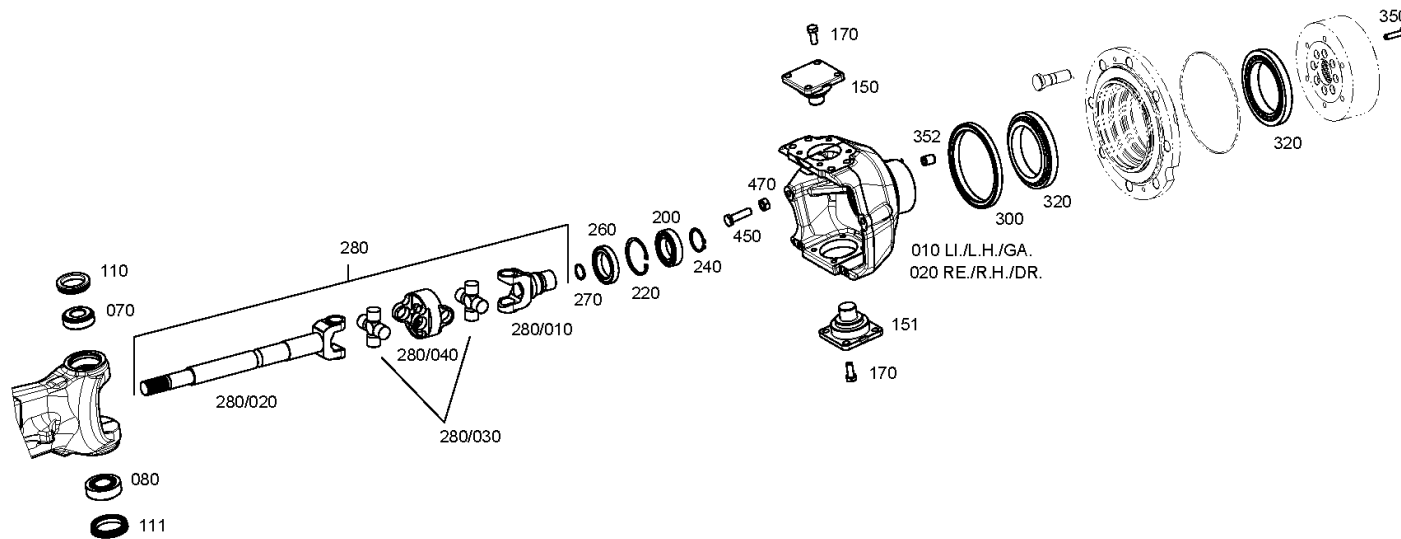
Material number: 4475.004.095

Plant: 447510316100

Material-assembly-group-no: 4475.103.161



MS-B 3025 /  
JOINT HOUSING



# Parts list

Page 1 from 1



MS-B 3025 /

Material number: 4475.004.095

Plant: 447510316100

Material-assembly-group-no: 4475.103.161

| Pos. | Material number | Customer material | Name                   | Quantity | ME | Amend. no.   | Techn. Info.           | Rep kit | Alternative material |
|------|-----------------|-------------------|------------------------|----------|----|--------------|------------------------|---------|----------------------|
| 10   | 4475.304.235    |                   | JOINT HOUSING          | 1        |    |              |                        |         |                      |
| 20   | 4475.304.236    |                   | JOINT HOUSING          | 1        |    |              |                        |         |                      |
| 70   | 0750.117.859    |                   | TAPERED ROLLER BEARING | 2        |    | K01703/0510  | 30,162X64,292X21,433   |         |                      |
| 80   | 0750.117.866    |                   | TAPERED ROLLER BEARING | 2        |    | K01703/0510  | 34,925X72,233X25,400   |         |                      |
| 110  | 0734.309.369    |                   | MULTI SEALING RING     | 2        |    |              | 49-68-13,8             |         |                      |
| 111  | 0734.309.390    |                   | MULTI SEALING RING     | 2        |    |              | 57-76-13,8             |         |                      |
| 150  | 4475.304.199    |                   | BEARING PIN            | 2        |    |              | D-TEIL                 |         |                      |
| 151  | 4475.304.202    |                   | BEARING PIN            | 2        |    |              | D-TEIL                 |         |                      |
| 170  | 0636.016.014    |                   | HEXAGON SCREW          | 16       |    |              | M12X30                 |         |                      |
| 200  | 0750.116.255    |                   | BALL BEARING           | 2        |    |              | 45,000X75,000X16,000   |         |                      |
| 220  | 0630.502.037    |                   | RETAINING RING         | 2        |    |              | 75X2,5                 |         |                      |
| 240  | 0630.501.033    |                   | RETAINING RING         | 2        |    |              | 45X1,75                |         |                      |
| 260  | 0734.309.419    |                   | CASSETTE RING          | 2        |    |              | 53,2-78-13             |         |                      |
| 270  | 4472.353.040    |                   | RETAINING RING         | 2        |    |              |                        |         |                      |
| 280  | 0501.009.341    |                   | D.UNIVERS.SHAFT        | 2        |    | Z00038488210 |                        |         |                      |
| 300  | 0734.309.423    |                   | CASSETTE RING          | 2        |    | Z00028031510 | 150,15-178-13/16       |         |                      |
| 320  | 0750.117.635    |                   | TAPERED ROLLER BEARING | 4        |    |              | 109,538X158,750X23,020 |         |                      |
| 350  | 4475.304.213    |                   | HEXAGON SCREW          | 16       |    | Z00026667210 | M10X1,5X45             |         |                      |
| 352  | 4475.304.230    |                   | BUSH                   | 16       |    |              |                        |         |                      |
| 450  | 0736.020.128    |                   | STOP SCREW             | 4        |    |              | M14X1.5X50             |         |                      |
| 470  | 0637.006.092    |                   | HEXAGON NUT            | 4        |    |              | M14X1,5                |         |                      |

# Plant

Page 1 from 1

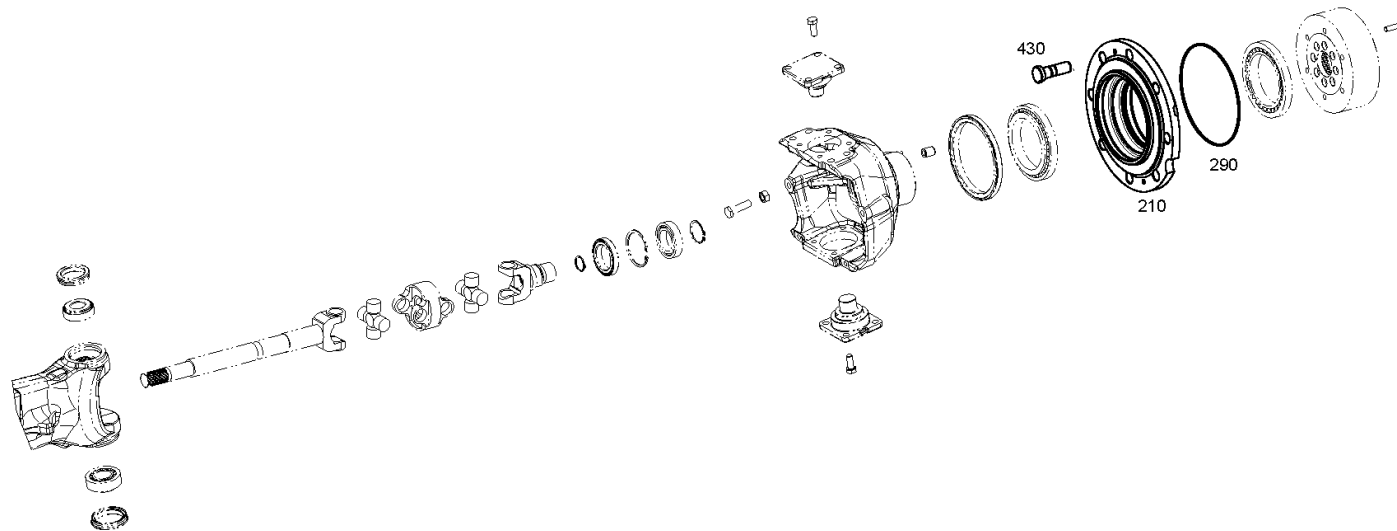
Material number: 4475.004.095

Plant: 447510346700

Material-assembly-group-no: 4475.103.467



MS-B 3025 /  
JOINT HOUSING



# Parts list

Page 1 from 1



MS-B 3025 /

Material number: 4475.004.095

Plant: 447510346700

Material-assembly-group-no: 4475.103.467

| Pos. | Material number | Customer material | Name       | Quantity | ME | Amend. no.   | Techn. Info. | Rep kit | Alternative material |
|------|-----------------|-------------------|------------|----------|----|--------------|--------------|---------|----------------------|
| 210  | 4475.304.223    |                   | HUB        | 2        |    | Z00013427210 |              |         |                      |
| 290  | 0634.303.229    |                   | O-RING     | 2        |    |              | 200X3        |         |                      |
| 430  | 4472.336.280    |                   | WHEEL STUD | 16       |    | Z00007659910 | M22X1,5x75   |         |                      |

# Plant

Page 1 from 1

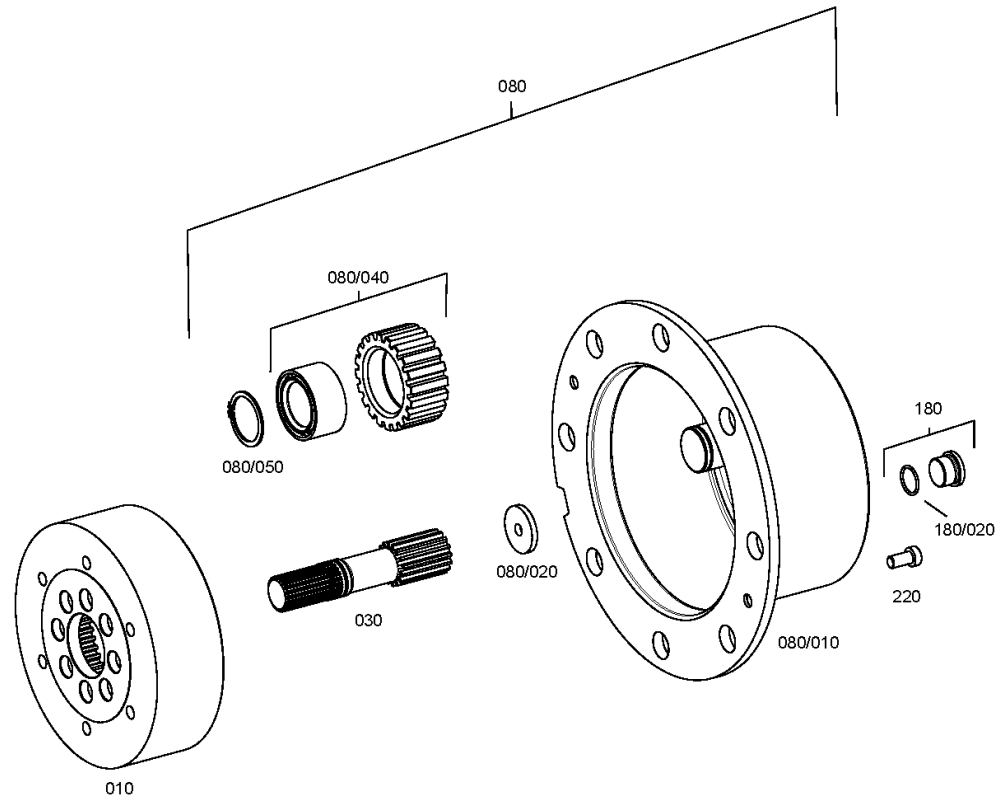
Material number: 4475.004.095

Plant: 447510409700

Material-assembly-group-no: 4475.104.097



MS-B 3025 /  
PLANETARY DRIVE



# Parts list

Page 1 from 1



MS-B 3025 /

Material number: 4475.004.095

Plant: 447510409700

Material-assembly-group-no: 4475.104.097

| Pos. | Material number | Customer material | Name           | Quantity | ME | Amend. no.   | Techn. Info.           | Rep kit | Alternative material |
|------|-----------------|-------------------|----------------|----------|----|--------------|------------------------|---------|----------------------|
| 10   | 4475.304.188    |                   | RING GEAR      | 2        |    |              | Z=98                   |         |                      |
| 30   | 4475.305.631    |                   | SUN GEAR SHAFT | 2        |    | Z00023670710 | Z=16*Z=22              |         |                      |
| 80   | 4475.204.052    |                   | PLANET CARRIER | 2        |    | Z00023670710 | MT-L 3020 II/P3-192-37 |         |                      |
| /10  | 4475.305.587    |                   | PLANET CARRIER | 1        |    |              |                        |         |                      |
| /20  | 4475.319.254    |                   | THRUST WASHER  | 1        |    |              |                        |         |                      |
| /40  | 4475.298.062    |                   | PLANETARY GEAR | 3        |    |              |                        |         |                      |
| /40  | 4475.304.211    |                   | PLANETARY GEAR |          |    |              | z=39 D-Teil            |         | 4475.298.062         |
| /50  | 0630.501.030    |                   | RETAINING RING | 3        |    |              | 38X1,75                |         |                      |
| 180  | 4475.280.099    |                   | SCREW PLUG     | 2        |    |              |                        |         |                      |
| /20  | 0634.303.266    |                   | O-RING         | 1        |    |              | 21X2                   |         |                      |
| 220  | 0636.102.041    |                   | CAP SCREW      | 4        |    |              | M10X20                 |         |                      |

# Plant

Page 1 from 1

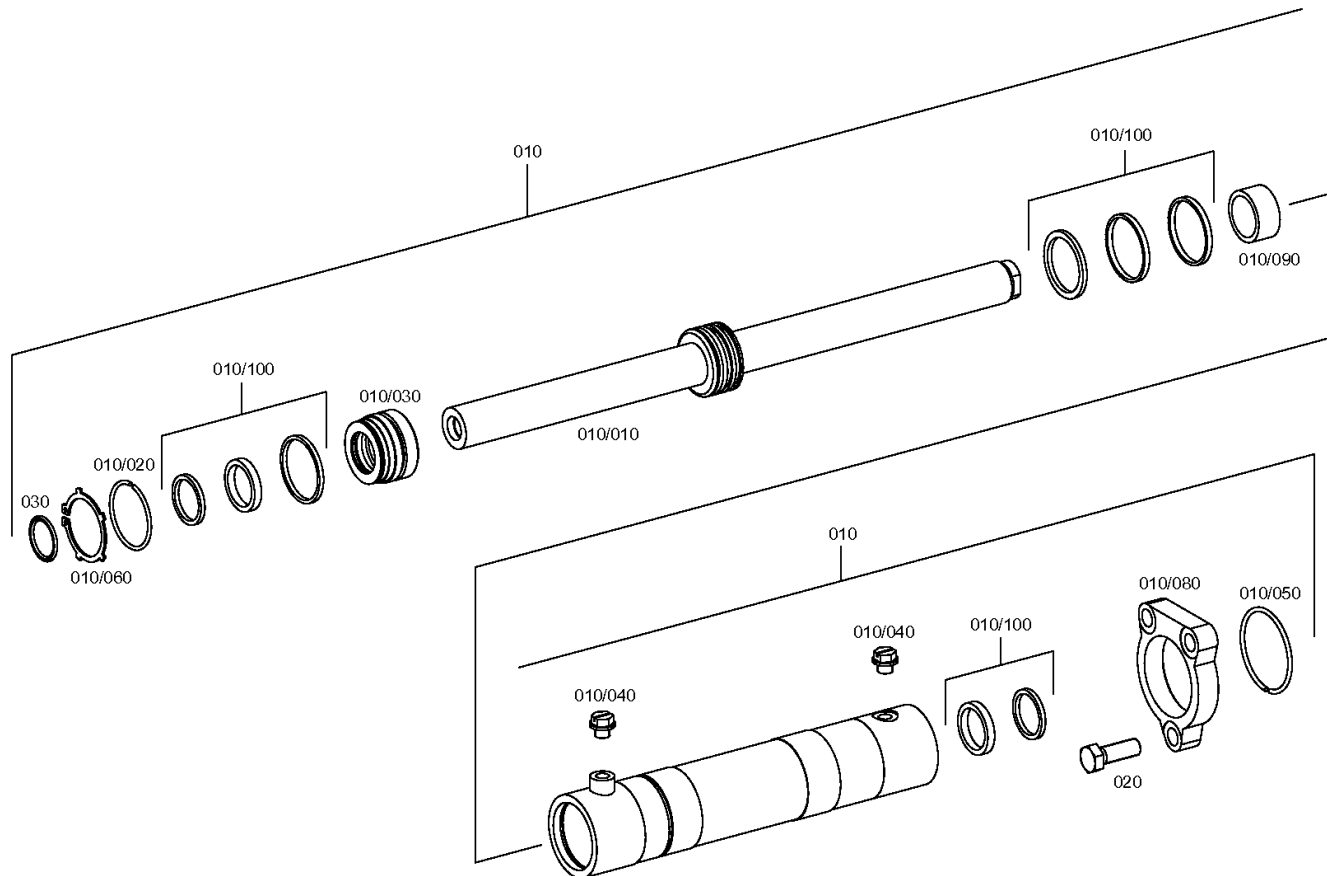
Material number: 4475.004.095

Plant: 447510508500

Material-assembly-group-no: 4475.105.085



MS-B 3025 /  
STEERING



# Parts list

Page 1 from 1



MS-B 3025 /

Material number: 4475.004.095

Plant: 447510508500

Material-assembly-group-no: 4475.105.085

| Pos. | Material number | Customer material | Name              | Quantity | ME | Amend. no.   | Techn. Info. | Rep kit | Alternative material |
|------|-----------------|-------------------|-------------------|----------|----|--------------|--------------|---------|----------------------|
| 10   | 0501.214.942    |                   | STEERING CYLINDER | 1        |    |              |              |         |                      |
| /10  | 0501.322.452    |                   | PISTON ROD        | 1        |    |              |              |         |                      |
| /20  | 0501.322.451    |                   | SICH.RING         | 1        |    |              |              |         |                      |
| /30  | 0501.322.450    |                   | PLUG              | 1        |    |              |              |         |                      |
| /40  | 0501.322.449    |                   | PLUG              | 2        |    |              |              |         |                      |
| /50  | 0501.322.448    |                   | RING              | 1        |    |              |              |         |                      |
| /60  | 0501.322.447    |                   | RING              | 2        |    |              |              |         |                      |
| /80  | 0501.322.445    |                   | FLANGE            | 1        |    |              |              |         |                      |
| /90  | 0501.322.444    |                   | SPACER            | 1        |    |              |              |         |                      |
| /100 | 0501.298.524    |                   | REPAIR KIT        | 1        |    |              |              |         |                      |
| 20   | 0636.016.086    |                   | HEXAGON SCREW     | 3        |    |              | M16X45       |         |                      |
| 30   | 0634.306.328    |                   | O-RING            | 1        |    | Z00018933310 | 38X4         |         |                      |