



Spare Parts Catalog

APL-B 755

Material number: 4472.077.090

Current date: 13.04.2017

ZF Friedrichshafen AG
Hauptverwaltung
80038 Friedrichshafen
Deutschland

Telefon: +49 7541 77-0

Telefax: +49 7541 77-908000

www.zf.com

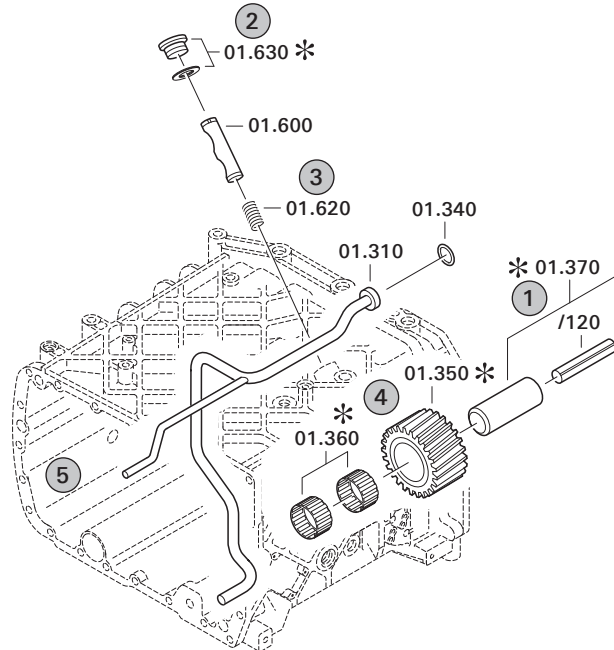
zuständiges Werk:
Passau

Notes relating to the spare parts catalog

Setup of the spare parts catalog

- Cover sheet
- Technical Cover (only in SDM print)
- Overview of figures
- Figure
- Associated parts list
- Next figure
- Associated parts list
- ...

Figure and parts list



Overview of figures

Bildtafel Figure	Sachnummer Product number	Benennung (Description)	Technische Info Technical info	Description (Benennung)	Menge Quantity	Einheit Unit
068.08.17	1316.170.001	AUSLEGER	WL	SHIFT TURRET	1	Stk
068.08.06	1316.170.031	DECKEL	WL*H-H*VM	COVER	1	Stk
068.08.14	1316.170.808	DECKEL	WL*AUSL+GEH*H-H*HF160N	COVER	1	Stk
08	1316.170.441	ANSCHLUSSTEILE	WL*NG-VORB*RG-SCHL*168N*BAJONETT	CONNECTING PARTS	1	Stk

The "gap" indicates that there is no separate graphics panel (poster) for this assembly
The parts of this assembly are shown with the same mid-section number on the figure

1 Positions and subpositions

Pos.	Sachnummer Product number	Benennung (Description)	Technische Info Technical info	Description (Benennung)	Menge Quantity	Einheit Unit
0370	1315.201.054	RUECKLAUFBOLZEN	KPL.16S151*SG*L= 79	REV.IDLER SHAFT	1	Stk
/0120	0631.329.293	SPANNSTIFT		SLOT. PIN	1	Stk

Positions marked with "/" are the individual items of a completion
For example: Position 0370 contains a centering pin with the position /0120

2 Combinations with standardized parts

Pos.	Sachnummer Product number	Benennung (Description)	Technische Info Technical info	Description (Benennung)	Menge Quantity	Einheit Unit
0630		VERSCHL.SCHR.		SCREW PLUG	1	Stk
	0636.302.067	VERSCHL.SCHR.		SCREW PLUG	1	Stk
	0634.801.249	DICHTRING	A 26 X 31	SEALING RING	1	Stk

The parts list shows the components included in the combination of standardized parts

3 Depiction of position/item number on the figure and in the parts list

01.620 - on the figure 01 relates to the assembly in which the position is included. Due to program-related reasons, it is shown on the figure.

0620 - in the parts list

Pos.	Sachnummer Product number	Benennung (Description)	Technische Info Technical info	Description (Benennung)	Menge Quantity	Einheit Unit
0620	0732.040.736	DRUCKFEDER		COMPRESSION SPRING	1	Stk

4 *-Positions

Positions marked with an * are optional i.e. inclusion in the parts list is not mandatory.
The following note is shown on the figure

je nach Stücklistenausführung
depending on spec. number
*
suivant la nomenclature
secondo la distinta base

5 Parts, dotted display

Parts with dotted display on the figure are only used for orientation of other parts



Pos.	Information	Amendment number
	PRODUCT DESCRIPTION:	
	MOUNTING POSITION:FRONT AXLE	
	RATIO TOTAL: I= 13,86	
	PLANETARY DRIVE:I=6,00 P4-190-40	
	BEVELGEAR SET: I= 2,31 T=30/13	
	MOUNTING: SUSPENSION MID POSITION	
	FLANGE DISTANCE: L=1890	
	BRAKE:	
	MULTIPLE-DISC BRAKE: HYDR. 130X180	
	LINING DISC: 5	
	OPERATION CYLINDER: INTEGRATION D=80X40/P MAX=180 BAR	
	DIFF.CARRIER:	
	TYPE: AE 500 K	
	SENS OF ROTATION:CLOCKWISE	
	RING GEAR: SPIRAL DIRECTION LEFT	
	POSITION OF RING GEAR: LEFT	
	FLANGE CONN: AD=120 *LZ=8 * D=10,1	
	DIFFERENTIAL:	
	TYPE: D=500	
	BEVEL SIDE GEAR SPLINE: N 35X1,25	
	DRAWINGS:	
	SECT.DRAWING: 4472 077 037(0)	
	INST.DRAWING: 4472 677 048(0)	
	TEST SPECIFICATION: 4472 760 013()	
	ASSEMBLY INSTRUCTION:	
	STEERING ANGLE: 31 DEGREE	
	PISTON STROKE 3,1 - 3,5 MM	
	AUXILIARY UNIT	
	OIL CAPACITY:	
	AXLE: (APPRXY) CA. 8,50L	
	WHEEL END/JE:CA. 2,10L	
	TOTAL: CA. 12,70L	
	OIL FILLING: YES	

Technical Cover

Page 2 from 2

Material number: 4472.077.090



APL-B 755 /

Pos.	Information	Amendment number
	OIL GRADE:SPECIFICATION TE ML 05 / AXLE	
	BRAKE CONTROL: ATF-OIL/MOTOROIL 10 W	
	WEIGHT-TOTAL: ...KG	
	COLOUR: 5 BLACK RAL 9005	
	MISCELLANEOUS/REMARKS:	

Assembly group overview

Page 1 from 1

Material number: 4472.077.090



APL-B 755 /

Graphics	Pos.	Material number	Name	Quantity	Amend. no.	Techn. Info.
447211608600	10	4472.116.086	INPUT	1		
447211640200	20	4472.116.402	INPUT	1		
446117300200	30	4461.173.048	DIFFERENTIAL	1		
447211702900	70	4472.117.029	AXLE CASING	1		
447211755800	80	4472.117.558	AXLE CASING	1		
447211807300	90	4472.118.073	JOINT HOUSING	1		
447211840700	100	4472.118.407	JOINT HOUSING	1		
447211911800	130	4472.119.118	OUTPUT	1		
447211904102	140	4472.119.621	OUTPUT	1		
447212002900	150	4472.120.029	STEERING	1		

Plant

Page 1 from 1

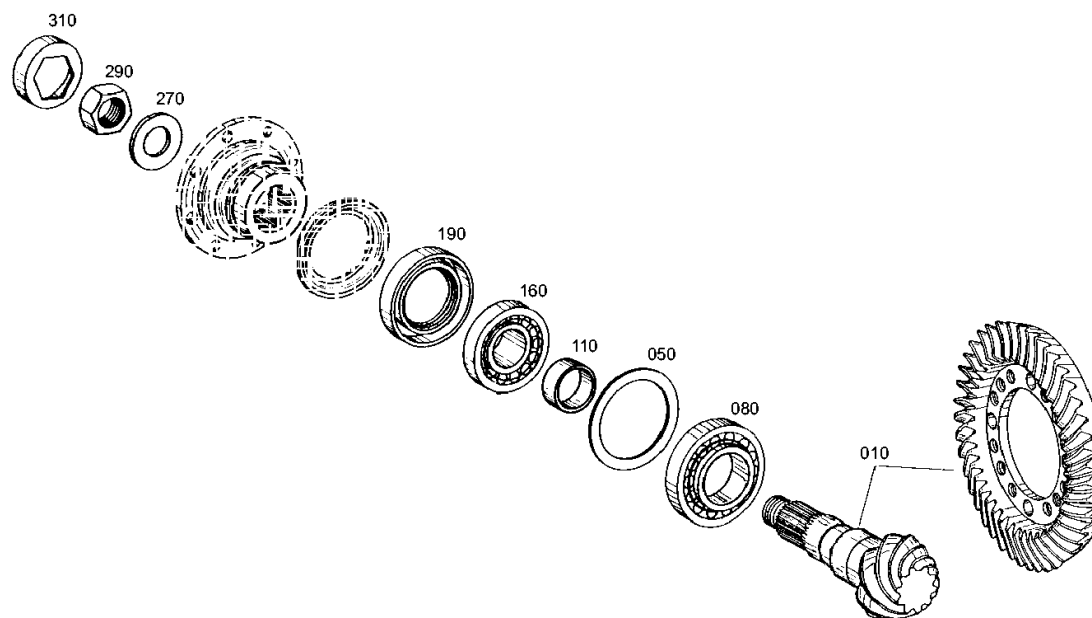
Material number: 4472.077.090

Plant: 447211608600

Material-assembly-group-no: 4472.116.086



APL-B 755 /
INPUT



Parts list

Page 1 from 3



APL-B 755 /

Material number: 4472.077.090

Plant: 447211608600

Material-assembly-group-no: 4472.116.086

Pos.	Material number	Customer material	Name	Quantity	ME	Amend. no.	Techn. Info.	Rep kit	Alternative material
10	4472.216.048		BEVEL GEAR SET	1			I=2,31/LI/FLSP ,15 - ,27		
50	---		WASHER	1					
---	0730.105.009		WASHER	1			S=1,5		
---	0730.105.001		WASHER	1			S=0,9		
---	0730.105.002		WASHER	1			S=0,95		
---	0730.105.003		WASHER	1			S=1,0		
---	0730.105.004		WASHER	1			S=1,05		
---	0730.105.005		WASHER	1			S=1,1		
---	0730.105.006		WASHER	1			S=1,15		
---	0730.104.990		WASHER	1			S=1,2		
---	0730.105.007		WASHER	1			S=1,25		
---	0730.105.008		WASHER	1			S=1,3		
---	0730.106.717		WASHER	1			S=0,7		
---	0730.106.718		WASHER	1			S=0,75		
---	0730.106.719		WASHER	1			S=0,8		
---	0730.106.720		WASHER	1			S=0,85		
80	0750.117.355		TAPERED ROLLER BEARING	1			50,000X105,000X32,000		
110	---		RING	1					
---	0730.161.962		RING	1			S=11,30		
---	0730.161.963		RING	1			S=11,33		
---	0730.161.964		RING	1			S=11,36		
---	0730.161.965		RING	1			S=11,39		
---	0730.161.966		RING	1			S=11,42		
---	0730.161.967		RING	1			S=11,45		
---	0730.161.968		RING	1			S=11,48		
---	0730.161.969		RING	1			S=11,51		
---	0730.161.970		RING	1			S=11,54		
---	0730.161.971		RING	1			S=11,57		
---	0730.161.972		RING	1			S=11,60		
---	0730.161.973		RING	1			S=11,63		
---	0730.161.974		RING	1			S=11,66		
---	0730.161.975		RING	1			S=11,69		
---	0730.161.976		RING	1			S=11,72		
---	0730.161.977		RING	1			S=11,75		

Parts list

Page 2 from 3



APL-B 755 /

Material number: 4472.077.090

Plant: 447211608600

Material-assembly-group-no: 4472.116.086

Pos.	Material number	Customer material	Name	Quantity	ME	Amend. no.	Techn. Info.	Rep kit	Alternative material
---	0730.161.978		RING	1			S=11,78		
---	0730.161.979		RING	1			S=11,81		
---	0730.161.980		RING	1			S=11,84		
---	0730.161.981		RING	1			S=11,87		
---	0730.161.982		RING	1			S=11,90		
---	0730.161.983		RING	1			S=11,93		
---	0730.161.984		RING	1			S=11,96		
---	0730.161.985		RING	1			S=11,99		
---	0730.161.986		RING	1			S=12,02		
---	0730.161.987		RING	1			S=12,05		
---	0730.161.988		RING	1			S=12,08		
---	0730.161.989		RING	1			S=12,11		
---	0730.161.990		RING	1			S=12,14		
---	0730.161.991		RING	1			S=12,17		
---	0730.161.992		RING	1			S=12,20		
---	0730.161.993		RING	1			S=12,23		
---	0730.161.994		RING	1			S=12,26		
---	0730.161.995		RING	1			S=12,29		
---	0730.161.996		RING	1			S=12,32		
---	0730.161.997		RING	1			S=12,35		
---	0730.161.998		RING	1			S=12,38		
---	0730.162.128		RING	1			S=11,27		
---	0730.162.127		RING	1			S=11,24		
---	0730.162.126		RING	1			S=11,21		
---	0730.162.125		RING	1			S=11,18		
---	0730.162.124		RING	1			S=11,15		
---	0730.162.123		RING	1			S=11,12		
---	0730.162.122		RING	1			S=11,09		
---	0730.162.121		RING	1			S=11,06		
---	0730.162.120		RING	1			S=11,03		
---	0730.162.119		RING	1			S=11,00		
---	0730.162.118		RING	1			S=10,97		
---	0730.162.117		RING	1			S=10,94		
160	0750.117.088		TAPER ROLLER BEARING	1			40,000X90,000X22,250		

Parts list

Page 3 from 3



APL-B 755 /

Material number: 4472.077.090

Plant: 447211608600

Material-assembly-group-no: 4472.116.086

Pos.	Material number	Customer material	Name	Quantity	ME	Amend. no.	Techn. Info.	Rep kit	Alternative material
190	0734.319.709		SHAFT SEAL	1		K00854/0210	60,0X90,0X10,0/14,5		
270	0730.160.726		WASHER	1					
290	0637.002.038		HEXAGON NUT	1			M27X1,5		
310	4460.355.004		LOCKING PLATE	1					

Plant

Page 1 from 1

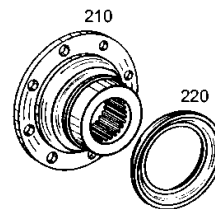
Material number: 4472.077.090

Plant: 447211640200

Material-assembly-group-no: 4472.116.402



APL-B 755 /
INPUT



Parts list

Page 1 from 1



APL-B 755 /

Material number: 4472.077.090

Plant: 447211640200

Material-assembly-group-no: 4472.116.402

Pos.	Material number	Customer material	Name	Quantity	ME	Amend. no.	Techn. Info.	Rep kit	Alternative material
210	4460.355.254		INPUT FLANGE	1			DIN-120-N38x1,25		
220	4472.398.007		SCREEN SHEET	1		K00854/0210			

Plant

Page 1 from 1

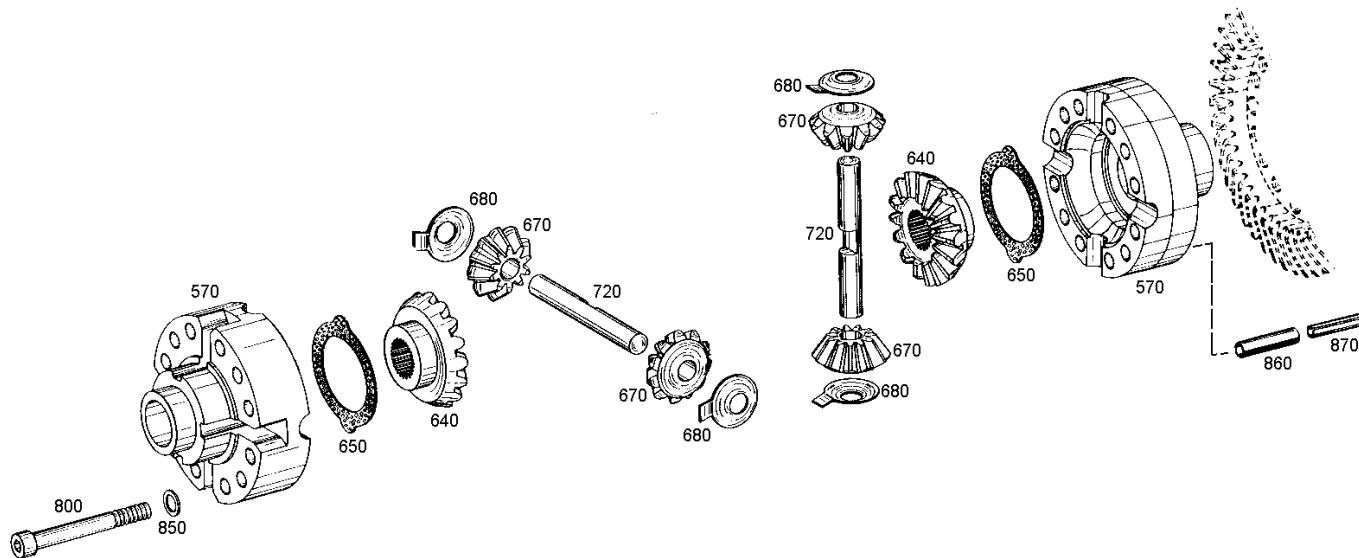
Material number: 4472.077.090

Plant: 446117300200

Material-assembly-group-no: 4461.173.048



APL-B 755 /
DIFFERENTIAL



Parts list

Page 1 from 1



APL-B 755 /

Material number: 4472.077.090

Plant: 446117300200

Material-assembly-group-no: 4461.173.048

Pos.	Material number	Customer material	Name	Quantity	ME	Amend. no.	Techn. Info.	Rep kit	Alternative material
570	4461.273.524		DIFF.CASE	1					
640	4461.371.062		AXLE BEVEL GEAR	2			Z=16		
650	0730.104.893		THRUST WASHER	2					
670	4481.333.081		DIFFERENTIAL BEVEL GEAR	4		K02427/9410	Z=11		
680	0730.106.007		THRUST WASHER	4			20,3 X 44X1,5		
720	4461.371.067		DIFFERENTIAL AXLE	2		K01967/0310			
800	0636.101.653		CAP SCREW	12			M12X1,5X120		
850	0730.103.246		WASHER	12			ENTHALT.IN 0730 105 412(2)		
860	0631.328.599		SLOTTED PIN	4			14X40		
870	0631.328.619		SLOTTED PIN	4			8X40		

Plant

Page 1 from 2

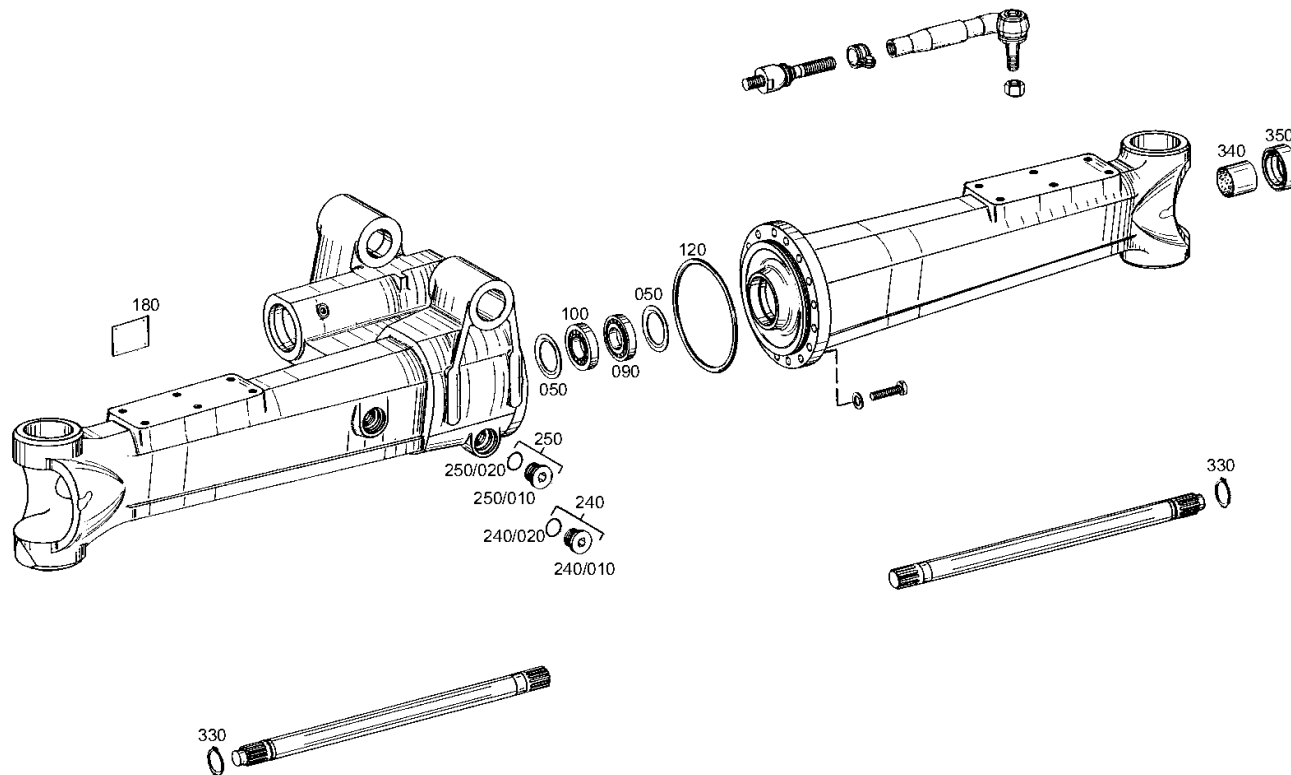
Material number: 4472.077.090

Plant: 447211702900

Material-assembly-group-no: 4472.117.029



APL-B 755 /
AXLE CASING



Plant

Page 2 from 2

Material number: 4472.077.090

Plant: 447211720500

Material-assembly-group-no: 4472.117.029



APL-B 755 /
AXLE CASING

There is presently no plate available for this parts list/ assembly.

Parts list

Page 1 from 2



APL-B 755 /

Material number: 4472.077.090

Plant: 447211702900

Material-assembly-group-no: 4472.117.029

Pos.	Material number	Customer material	Name	Quantity	ME	Amend. no.	Techn. Info.	Rep kit	Alternative material
50	---		SHIM	2					
---	0730.000.127		SHIM	1			A=0,10 IN 0730 005 413(2)		
---	0730.006.510		SHIM	1			A=0,15		
---	0730.000.126		SHIM	1			A=0,20 IN 0730 005 413(2)		
---	0730.006.511		SHIM	1			A=0,25		
---	0730.002.280		SHIM	1			A=0,30 IN 0730 005 413(2)		
---	0730.006.512		SHIM	1			A=0,35		
---	0730.001.012		SHIM	1			78X89,8X0,4		
---	0730.005.708		SHIM	1			A=0,45		
---	0730.000.125		SHIM	1			A=0,50 IN 0730 005 413(2)		
---	0730.005.709		SHIM	1			A=0,55		
---	0730.001.011		SHIM	1			78X89,8X0,6		
---	0730.006.513		SHIM	1			A=0,65		
---	0730.006.514		SHIM	1			A=0,70		
---	0730.006.515		SHIM	1			A=0,75		
---	0730.000.124		SHIM	1			A=0,80 IN 0730 005 413(2)		
---	0730.006.516		SHIM	1			A=0,85		
---	0730.006.517		SHIM	1			A=0,90		
---	0730.006.518		SHIM	1			A=0,95		
---	0730.000.123		SHIM	1			A=1,00 IN 0730 005 413(2)		
---	0730.006.519		SHIM	1			A=1,05		
---	0730.006.520		SHIM	1			A=1,10		
---	0730.006.521		SHIM	1			A=1,15		
---	0730.002.277		SHIM	1			A=1,20 IN 0730 005 413(2)		
---	0730.006.522		SHIM	1			A=1,25		
---	0730.006.523		SHIM	1			A=1,30		
---	0730.006.524		SHIM	1			A=1,35		
---	0730.001.010		SHIM	1			A=1,40 IN 0730 005 413(2)		
---	0730.006.525		SHIM	1			A=1,45		
---	0730.006.526		SHIM	1			A=1,50		
---	0730.006.527		SHIM	1			A=1,55		
---	0730.006.528		SHIM	1			A=1,60		
---	0730.006.529		SHIM	1			A=1,65		
---	0730.001.009		SHIM	1			A=2,00 IN 0730 005 413(2)		

Parts list

Page 2 from 2



APL-B 755 /

Material number: 4472.077.090

Plant: 447211702900

Material-assembly-group-no: 4472.117.029

Pos.	Material number	Customer material	Name	Quantity	ME	Amend. no.	Techn. Info.	Rep kit	Alternative material
---	0730.008.836		SHIM	1			A=1,47		
---	0730.008.837		SHIM	1			A=1,63		
---	0730.005.816		SHIM	1			A=1,75 IN 0730 005 413(2)		
---	0730.008.051		SHIM	1			A=1,70 IN 0730 005 413(2)		
---	0730.008.052		SHIM	1			A=1,80 IN 0730 005 413(2)		
---	0730.005.817		SHIM	1			A=1,85 IN 0730 005 413(2)		
---	0730.008.053		SHIM	1			A=1,90 IN 0730 005 413(2)		
---	0730.008.154		SHIM	1			A=1,95 IN 0730 005 413(2)		
90	0750.117.802		TAPERED ROLLER BEARING	1		K01637/0110	50,000X90,000X21,750		
100	0750.117.785		TAPER ROLLER BEARING	1		K01500/0110	55,000X90,000X23,000		
120	0634.304.012		O-RING	1			203X3		
180	0730.365.092		TYPE PLATE	1			ZF-Standard/Passau		
240	4475.280.103		SCREW PLUG	1					
/20	0634.304.654		O-RING	1			33X2,2		
250	4475.280.130		SCREW PLUG	1		K00696/0110			
/20	0634.304.654		O-RING	1			33X2,2		
330	4472.354.026		RETAINING RING	2			33,4x2		
340	0501.317.333		BUSH	2		K01649/9810			
350	0750.110.138		SHAFT SEAL	2			56,0X75,0X22,5		

Plant

Page 1 from 1

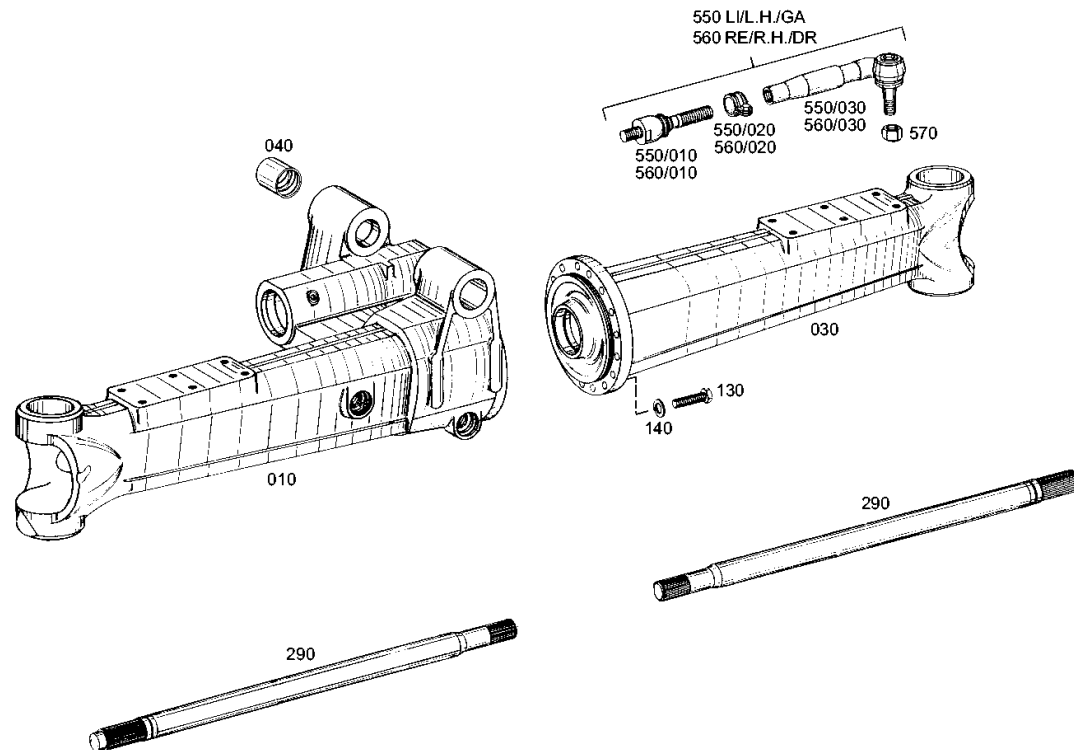
Material number: 4472.077.090

Plant: 447211755800

Material-assembly-group-no: 4472.117.558



APL-B 755 /
AXLE CASING



Parts list

Page 1 from 1



APL-B 755 /

Material number: 4472.077.090

Plant: 447211755800

Material-assembly-group-no: 4472.117.558

Pos.	Material number	Customer material	Name	Quantity	ME	Amend. no.	Techn. Info.	Rep kit	Alternative material
10	4472.317.032		AXLE CASING	1					
30	4472.317.059		AXLE CASING	1		K01260/0410			
40	0750.101.125		BEARING BUSH	2			CUZN40A12		
130	0636.011.459		HEXAGON SCREW	16		K01260/0410	M18X65		
140	0730.101.840		WASHER	16		K01151/0410	19X30X3		
290	4472.317.011		STUB SHAFT	2			Z=26 A=712		
550	0501.006.401		TIE ROD	1		K01584/9710			
/10	0501.205.257		AXIAL JOINT	1					
/20	0501.220.909		CLAMP	1					
/30	0501.222.835		BALL JOINT	1					
560	0501.006.402		TIE ROD	1		K01584/9710			
/10	0501.205.257		AXIAL JOINT	1					
/20	0501.220.909		CLAMP	1					
/30	0501.222.836		BALL JOINT	1					
570	0501.316.474		LOCKING NUT	2		K01584/9710	M27X1,5		

Plant

Page 1 from 1

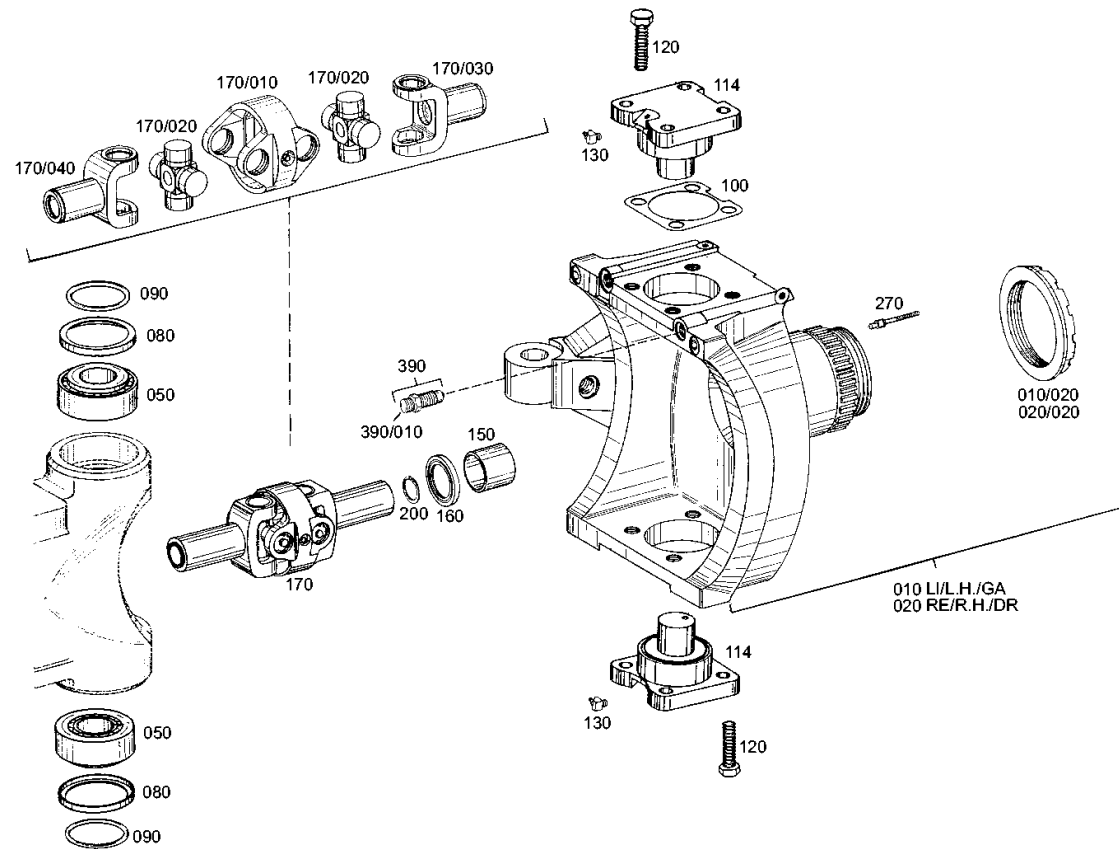
Material number: 4472.077.090

Plant: 447211807300

Material-assembly-group-no: 4472.118.073



APL-B 755 /
JOINT HOUSING



Parts list

Page 1 from 1



APL-B 755 /

Material number: 4472.077.090

Plant: 447211807300

Material-assembly-group-no: 4472.118.073

Pos.	Material number	Customer material	Name	Quantity	ME	Amend. no.	Techn. Info.	Rep kit	Alternative material
10	4472.218.025		JOINT HOUSING	1		K01642/0010			
/20	0737.502.190		SLOTTED NUT	1			M95X1,5		
20	4472.218.027		JOINT HOUSING	1		K01642/0010			
/20	0737.502.190		SLOTTED NUT	1			M95X1,5		
50	0750.117.469		TAPERED ROLLER BEARING	4			47,625X95,250X30,162		
80	4466.356.016		SEALING CAP	4					
90	0634.303.849		O-RING	4			74X4		
100	---		SHIM	2					
---	4472.318.065		SHIM	1			A=0,6		
---	4472.318.066		SHIM	1			A=0,8		
---	4472.318.067		SHIM	1			A=1,0		
---	4472.318.068		SHIM	1			A=1,2		
---	4472.318.069		SHIM	1			A=1,4		
---	4472.318.070		SHIM	1			A=1,6		
---	4472.318.071		SHIM	1			A=1,8		
---	4472.318.072		SHIM	1			A=2,0		
114	4472.318.061		BEARING PIN	4					
120	0636.016.040		HEXAGON SCREW	16			M16X35		
130	0632.604.515		LUBRICATING NIPPLE	4					
150	0730.260.621		BUSH	2		K00430/0110	56X60X40		
160	0750.110.138		SHAFT SEAL	2			56,0X75,0X22,5		
164	0671.190.139		GREASE	2					
170	0501.206.521		DOUBLE JOINT	2					
/10	0501.207.955		CENTRAL PIECE	1					
/20	0501.207.956		JOINT CROSS	2					
/30	0501.208.095		FORK SHAFT	1					
/40	0501.208.096		FORK SHAFT	1					
200	4472.354.026		RETAINING RING	2			33,4x2		
270	0631.405.058		PLUG	8		K00307/0410			
390	0501.202.519		VENT VALVE	2					

Plant

Page 1 from 1

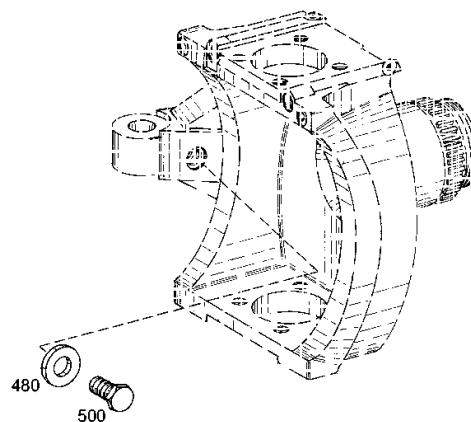
Material number: 4472.077.090

Plant: 447211840700

Material-assembly-group-no: 4472.118.407



APL-B 755 /
JOINT HOUSING



Parts list

Page 1 from 1



APL-B 755 /

Material number: 4472.077.090

Plant: 447211840700

Material-assembly-group-no: 4472.118.407

Pos.	Material number	Customer material	Name	Quantity	ME	Amend. no.	Techn. Info.	Rep kit	Alternative material
480	---		STOP WASHER	2					
---	0730.161.034		STOP WASHER	1			A=10,0		
---	0730.161.035		STOP WASHER	1			A=9,0		
---	0730.161.036		STOP WASHER	1			A=8,0		
---	0730.161.081		STOP WASHER	1			A=8,5		
---	0730.161.082		STOP WASHER	1			A=9,5		
---	0730.161.083		STOP WASHER	1			A=10,5		
---	0730.161.084		STOP WASHER	1			A=11,0		
---	0730.162.456		STOP WASHER	1			A=11,5		
---	0730.162.457		STOP WASHER	1			A=12,0		
---	0730.162.458		STOP WASHER	1			A=12,5		
---	0730.162.459		STOP WASHER	1			A=13,0		
---	0730.162.460		STOP WASHER	1			A=13,5		
---	0730.162.461		STOP WASHER	1			A=14,0		
500	0736.010.047		STOP SCREW	2		K00708/9510	M18X40		

Plant

Page 1 from 1

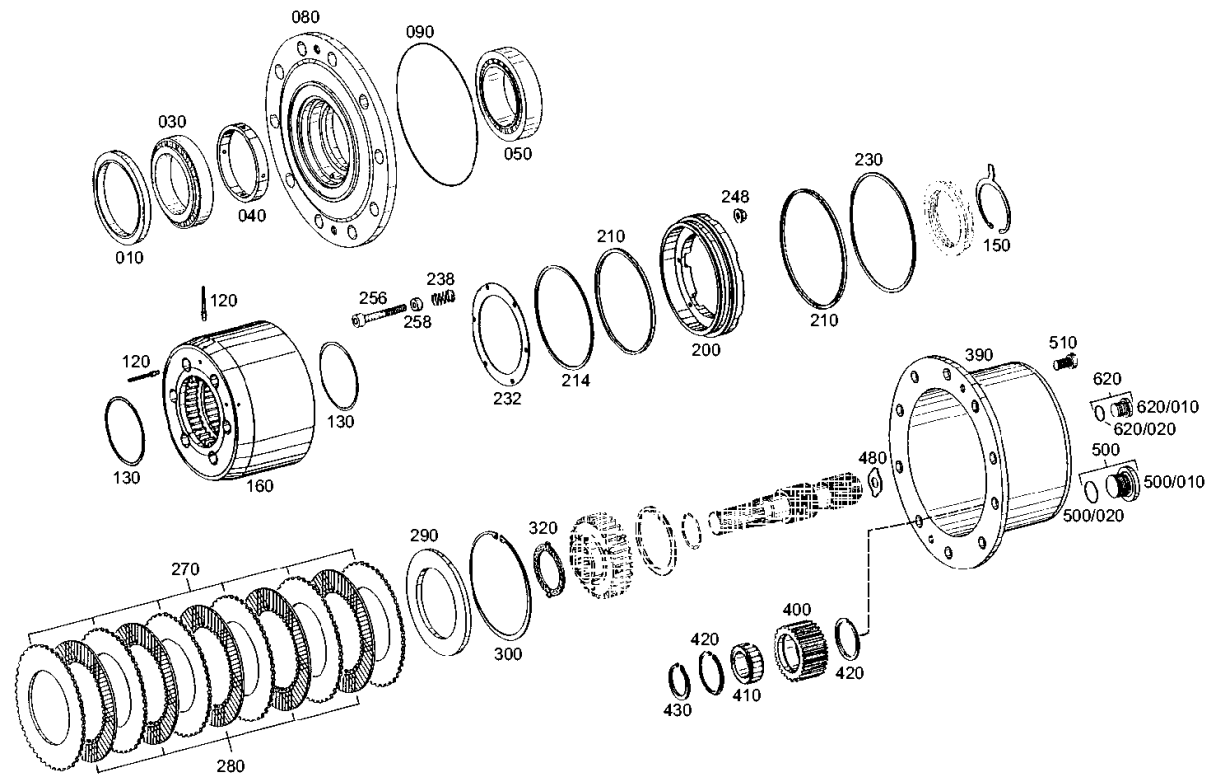
Material number: 4472.077.090

Plant: 447211911800

Material-assembly-group-no: 4472.119.118



APL-B 755 /
OUTPUT



Parts list

Page 1 from 2

Material number: 4472.077.090

Plant: 447211911800

Material-assembly-group-no: 4472.119.118



APL-B 755 /

Pos.	Material number	Customer material	Name	Quantity	ME	Amend. no.	Techn. Info.	Rep kit	Alternative material
10	0734.309.422		CASSETTE RING	2		K01164/0410	136,8-165-13		
30	0750.117.652		TAPER ROLLER BEARING	2			109,538X158,750X23,020		
40	---		RING	2					
---	0730.161.833		RING	1			S=15,2		
---	0730.161.832		RING	1			S=15,0		
---	0730.161.831		RING	1			S=14,8		
---	0730.161.830		RING	1			S=14,6		
---	0730.161.829		RING	1			S=14,4		
---	0730.161.828		RING	1			S=14,2		
---	0730.161.827		RING	1			S=14,0		
---	0730.162.560		RING	1			S=14,42		
---	0730.162.561		RING	1			S=14,45		
---	0730.162.562		RING	1			S=14,48		
---	0730.162.563		RING	1			S=14,51		
---	0730.162.564		RING	1			S=14,54		
50	0750.117.167		TAPER ROLLER BEARING	2			107,950X158,750X23,020		
80	4472.373.201		HUB	2					
90	0634.304.060		O-RING	2			255X4		
120	0631.405.028		PLUG	8					
130	0634.313.188		O-RING	4			98,5X3,5		
150	0730.502.079		RETAINING RING	2					
160	4472.319.266		RING GEAR	2		K01641/0010	Z=70		
200	4472.319.220		PISTON	2					
210	0734.317.169		GROOVED RING	4		K01410/9510	167-159,6-4		
214	0501.335.455		SUPPORT RING	2		Z00036146110	159,600X167,000X2,000		
230	0501.335.263		SUPPORT RING	2		Z00034704110	180,000X172,600X2,000		
232	4472.319.102		SUPPORTING RING	2					
238	0632.041.095		COMPRESSION SPRING	12					
248	0637.011.591		LOCKING NUT	12			M6		
256	0636.104.158		CAP SCREW	12			M6X40		
258	4472.320.071		SPRING SLEEVE	12					
270	---		OUTER CLUTCH DISK	12					
---	4462.305.079		OUTER CLUTCH DISK	1			A=2,0		
---	4462.305.080		OUTER CLUTCH DISK	1			A=2,5		

Parts list

Page 2 from 2



APL-B 755 /

Material number: 4472.077.090

Plant: 447211911800

Material-assembly-group-no: 4472.119.118

Pos.	Material number	Customer material	Name	Quantity	ME	Amend. no.	Techn. Info.	Rep kit	Alternative material
---	4462.305.081		OUTER CLUTCH DISK	1			A=3,0		
280	0501.314.381		INNER CLUTCH DISK	10			D180		
290	4462.305.050		END SHIM	2					
300	0630.502.187		RETAINING RING	2			182X4		
320	0730.106.288		THRUST WASHER	2					
390	4472.377.035		PLANET CARRIER	2					
400	4472.364.254		PLANETARY GEAR	8		K01439/0310	Z=27		
410	0735.455.281		CYLINDER ROLLER BEARING	8			36,000X54,300X22,000		
420	0501.309.954		ANGLE RING	16					
430	0630.501.029		RETAINING RING	8			36X1,75		
480	---		THRUST WASHER	2					
---	0730.104.159		THRUST WASHER	1			S=1,5		
---	0730.104.160		THRUST WASHER	1			S=2,0		
---	0730.105.126		THRUST WASHER	1			S=2,5		
---	0730.105.385		THRUST WASHER	1			S=3,0		
---	0730.105.400		THRUST WASHER	1			S=1,7		
---	0730.105.401		THRUST WASHER	1			S=2,2		
---	0730.105.800		THRUST WASHER	1			S=2,7		
---	0730.105.947		THRUST WASHER	1			S=3,5		
500	4475.280.133		SCREW PLUG	2		K00699/0110			
/10	0736.302.046		SCREW PLUG	1					
/20	0634.304.654		O-RING	1			33X2,2		
510	0636.104.074		CAP SCREW	4		K02816/9410	M12X20		
620	4475.280.015		SCREW PLUG	2			M16X1,5 KPL.MIT O-RING		
/20	0634.306.523		O-RING	1			13X2		

Plant

Page 1 from 1

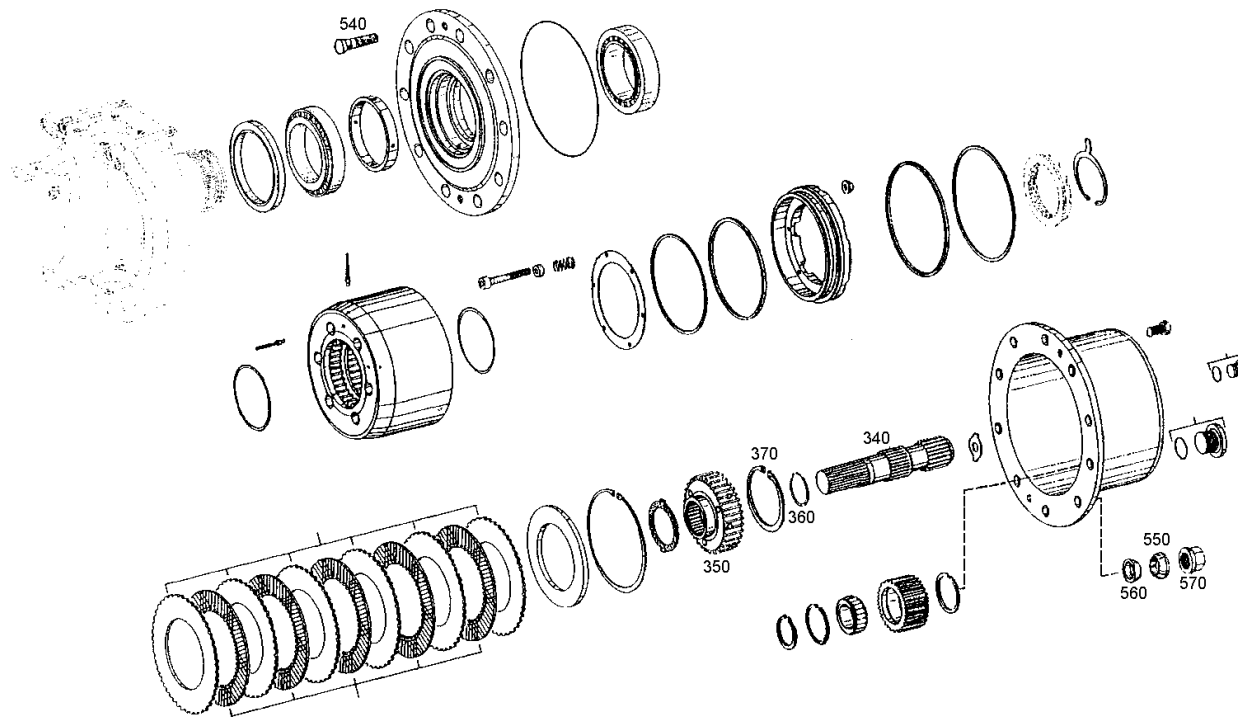
Material number: 4472.077.090

Plant: 447211904102

Material-assembly-group-no: 4472.119.621



APL-B 755 /
OUTPUT



Parts list

Page 1 from 1



APL-B 755 /

Material number: 4472.077.090

Plant: 447211904102

Material-assembly-group-no: 4472.119.621

Pos.	Material number	Customer material	Name	Quantity	ME	Amend. no.	Techn. Info.	Rep kit	Alternative material
340	4472.377.046		SUN GEAR SHAFT	2			Z=14		
350	4472.377.047		DISC CARRIER	2			Z=14		
360	0630.531.057		RETAINING RING	2			45X2,5		
370	0630.502.075		RETAINING RING	2			92X3		
540	4464.301.129		WHEEL STUD	20			M22X1,5X92		
550	0630.307.005		SPRING WASHER	20					
560	0750.101.083		CENTERING RING	20			22X32X6		
570	0637.018.026		WHEEL NUT	20					

Plant

Page 1 from 1

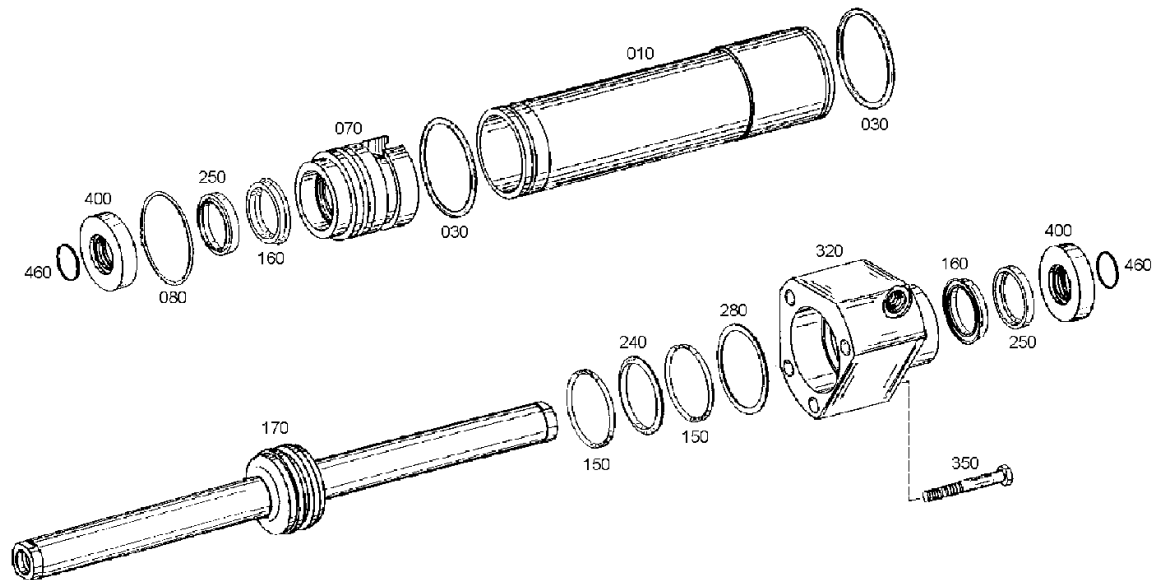
Material number: 4472.077.090

Plant: 447212002900

Material-assembly-group-no: 4472.120.029



APL-B 755 /
STEERING



Parts list

Page 1 from 1



APL-B 755 /

Material number: 4472.077.090

Plant: 447212002900

Material-assembly-group-no: 4472.120.029

Pos.	Material number	Customer material	Name	Quantity	ME	Amend. no.	Techn. Info.	Rep kit	Alternative material
10	4472.354.018		CYLINDER	1					
30	0634.306.083		O-RING	2			85X3		
70	4472.354.103		GUIDANCE	1					
80	0634.303.681		O-RING	1			82X3		
150	4472.354.024		SCRAPER RING	2					
160	0734.317.061		GROOVED RING	2					
170	0501.212.448		PISTON ROD	1					
240	4472.354.025		SEALING RING	1					
250	0750.112.028		SCRAPER	2			D=40X48/4,8-7 40X48X5,1/7		
280	---		WASHER	1					
---	0730.004.078		WASHER	1			81X91,8X1		
---	0730.004.079		WASHER	1			81X91,8X1,1		
---	0730.004.080		WASHER	1			81X91,8X1,2		
---	0730.004.081		WASHER	1			81X91,8X1,3		
---	0730.004.082		WASHER	1			81X91,8X1,4		
---	0730.004.083		WASHER	1			81X91,8X1,5		
---	0730.004.084		WASHER	1			81X91,8X1,6		
---	0730.004.085		WASHER	1			81X91,8X1,7		
---	0730.004.086		WASHER	1			81X91,8X1,8		
---	0730.004.128		WASHER	1			81X91,8X1,05		
---	0730.004.129		WASHER	1			81X91,8X1,15		
---	0730.004.130		WASHER	1			81X91,8X1,25		
---	0730.004.131		WASHER	1			81X91,8X1,35		
---	0730.004.132		WASHER	1			81X91,8X1,45		
---	0730.004.133		WASHER	1			81X91,8X1,55		
---	0730.004.134		WASHER	1			81X91,8X1,65		
---	0730.004.135		WASHER	1			S=1,75		
---	0730.004.665		WASHER	1			81X91,8X0,7		
---	0730.004.666		WASHER	1			81X91,8X0,8		
---	0730.004.667		WASHER	1			81X91,8X0,9		
320	4472.354.108		GUIDANCE	1					
350	0636.011.338		HEXAGON SCREW	4			M14X100		
400	4472.377.029		STOP RING	2					
460	0634.306.328		O-RING	2			38X4		